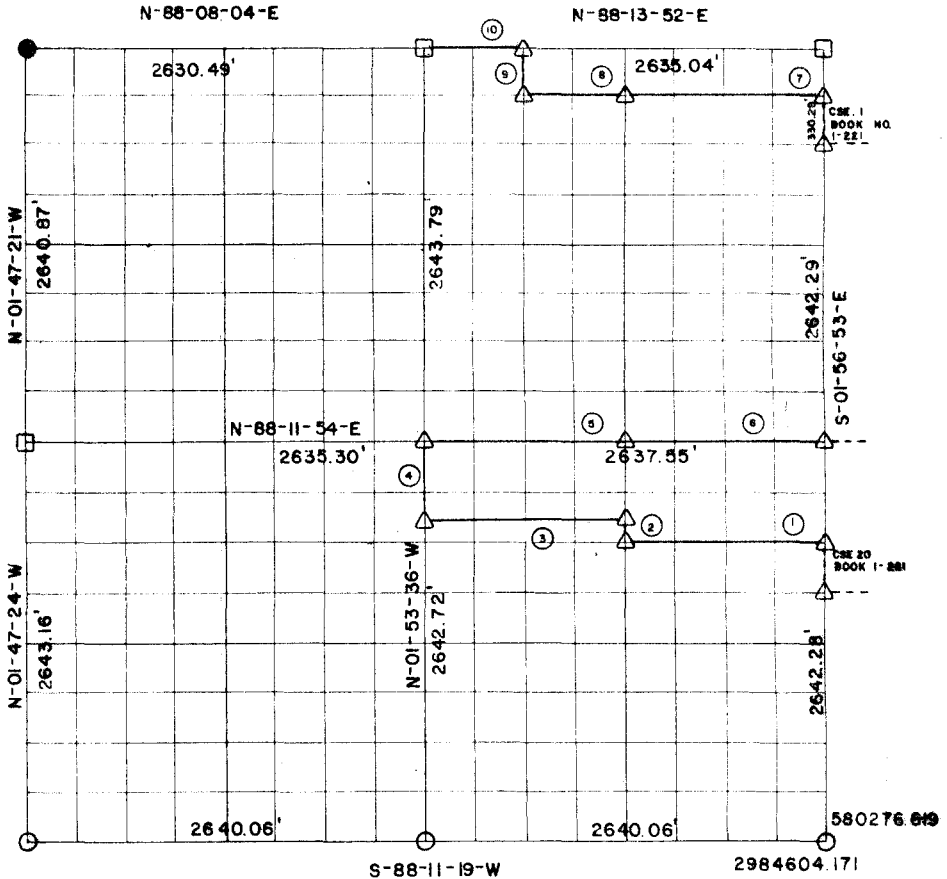


RECORD BOUNDARY PLAT WISTER LAKE POTEAU RIVER OKLAHOMA



SEC. 24 T 5N R 24E LE FLORE COUNTY



NOTE: ALL BEARINGS AND DISTANCE ARE GRID

Course No.	Distance	Bearing	Course No.	Distance	Bearing
1	1319.09'	S-88-11-45-W			
2	165.16'	N-01-55-14-W			
3	1319.01'	S-88-11-47-W			
4	495.51'	N-01-53-36-W			
5	1318.78'	N-88-11-54-E			
6	1318.78'	N-88-11-54-E			
7	1317.68'	S-88-13-37-W			
8	658.84'	S-88-13-37-W			
9	330.43'	N-01-54-26-W			
10	658.76'	S-88-13-52-E			
	<i>890.04 = 1.68</i>				

CERTIFICATE OF SURVEY Field Book No. 1-222 Date SEP. 1977

I HEREBY CERTIFY THAT THE ABOVE PLAT IS A TRUE AND CORRECT REPRESENTATION OF THE SURVEY OF THE ABOVE SECTION.

CURTIS & GUINN SURVEYING
STONEWALL, OKLA.

Under the Supervision of
U.S. ARMY CORPS OF ENGINEERS
TULSA DISTRICT, OKLAHOMA

LEGEND

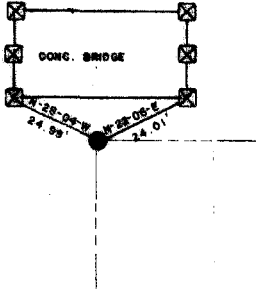
- MONUMENT SET
- MONUMENT FOUND
- ORIGINAL CORNER
- IRON PIN FOUND
- IRON PIN SET

Billy L. Curtis
REGISTERED LAND SURVEYOR NO. 603

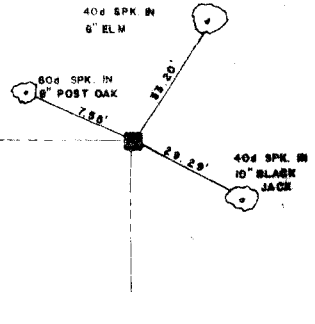
WISTE LAKE POTEAU RIVER OKLAHOMA

SECTION AND QUARTER SECTION CORNER
REFERENCES FOR
SEC. 24 T.5N., R.24E., 1 M., COUNTY-LE FLORE

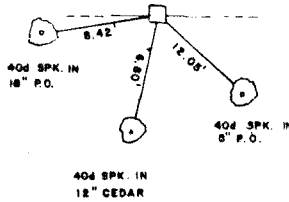
N.W. CORNER



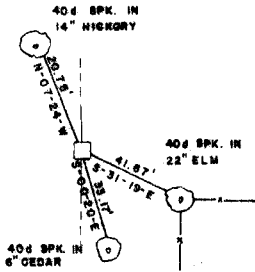
N.E. CORNER



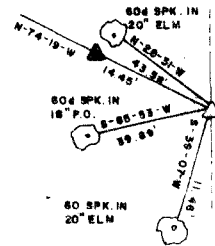
NORTH 1/4 COR.



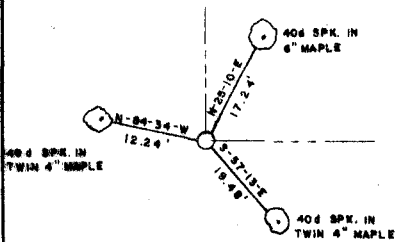
WEST 1/4 COR.



EAST 1/4 COR.

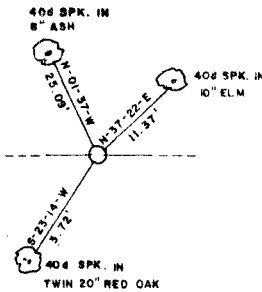


S.W. CORNER



S.E. CORNER

SOUTH 1/4 COR.



NO TIES

Field Book No. 1-222 Date SEP. 1977

LEGEND

- ▲ — MONUMENT FOUND
- △ — MONUMENT SET
- — CORNER CORNER
- — IRON PIN FOUND
- — IRON PIN SET

CURTIS & GUINN SURVEYING
STONEWALL, OKLA.

Billy L. Curtis
REGISTERED LAND SURVEYOR NO. 605

Under the Supervision of
U.S. ARMY CORPS OF ENGINEERS
TULSA DISTRICT, OKLAHOMA