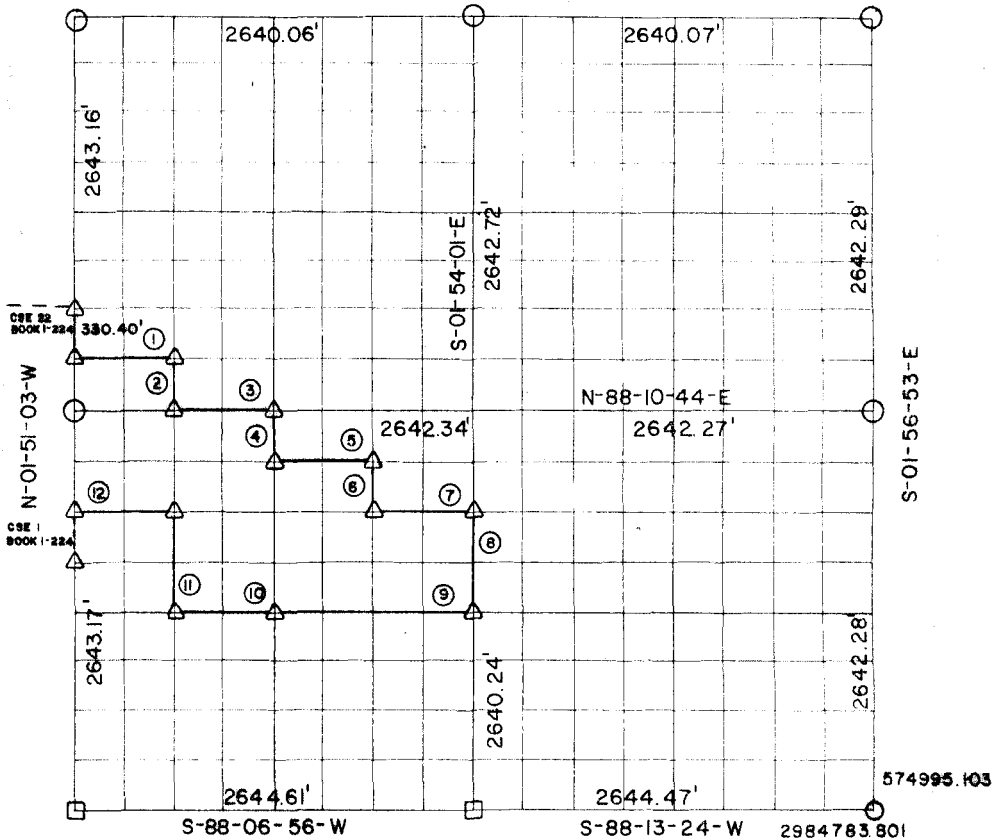


RECORD BOUNDARY PLAT WISTER LAKE POTEAU RIVER OKLAHOMA



SEC. 25 T 5N R 24E LE FLORE COUNTY
N-88-11-19-E



NOTE: ALL BEARINGS AND DISTANCE ARE GRID

Course No.	Distance	Bearing	Course No.	Distance	Bearing
1	660.51'	N-88-10-49-E			
2	330.38'	S-01-51-48-E			
3	660.58'	N-88-10-45-E			
4	330.21'	S-01-52-32-E			
5	660.66'	N-88-10-16-E			
6	330.12'	S-01-53-17-E			
7	660.73'	N-88-09-47-E			
8	660.06'	S-01-54-01-E			
9	1321.74'	S-88-08-50-W			
10	660.87'	S-88-08-50-W			
11	660.61'	N-01-51-48-W			
12	660.73'	S-88-09-48-W			
4591.2 = 1.43					

CERTIFICATE OF SURVEY Field Book No. 1-223 Date SEP. 1977

I HEREBY CERTIFY THAT THE ABOVE
PLAT IS A TRUE AND CORRECT
REPRESENTATION OF THE SURVEY
OF THE ABOVE SECTION

CURTIS & GUINN SURVEYING
STONEWALL, OKLA.

LEGEND

- △ — MONUMENT SET
- ▲ — MONUMENT FOUND
- — ORIGINAL CORNER
- — IRON PIN FOUND
- — IRON PIN SET

Under the Supervision of
U.S. ARMY CORPS OF ENGINEERS
TULSA DISTRICT, OKLAHOMA

B. J. Curtis
REGISTERED LAND SURVEYOR NO. 602

WISTE LAKE POTEAU RIVER OKLAHOMA

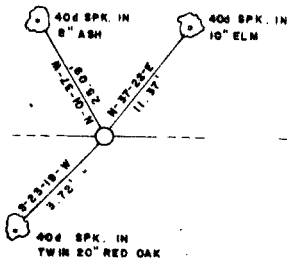
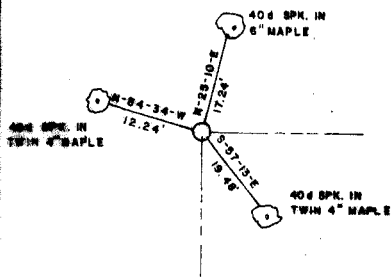
SECTION AND QUARTER SECTION CORNER
REFERENCES FOR

SEC. 25 T.5N., R.24E., 1 M., COUNTY-LE FLORE

N.W. CORNER

N.E. CORNER

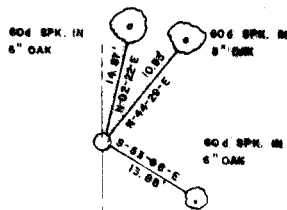
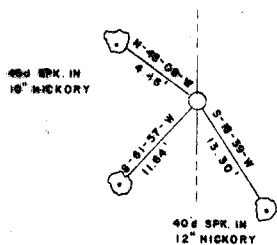
NORTH 1/4 COR.



NO TIES

WEST 1/4 COR.

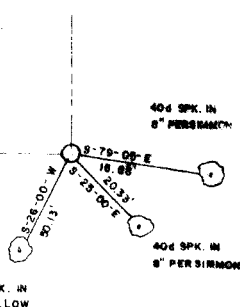
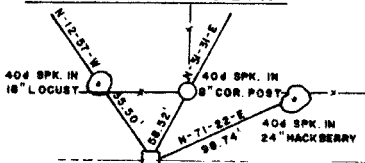
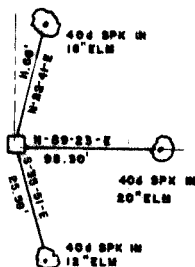
EAST 1/4 COR.



S.W. CORNER

S.E. CORNER

SOUTH 1/4 COR.



Field Book No. I-223 Date SEP. 1977

LEGEND

- ▲ -- MONUMENT FOUND
- △ -- MONUMENT SET
- -- ORIGINAL CORNER
- -- IRON PIN FOUND
- -- IRON PIN SET

CURTIS & GUINN SURVEYING
STONEWALL, OKLA.

Curtis
REGISTERED LAND SURVEYOR NO. 603

Under the Supervision of
U.S. ARMY CORPS OF ENGINEERS
TULSA DISTRICT, OKLAHOMA