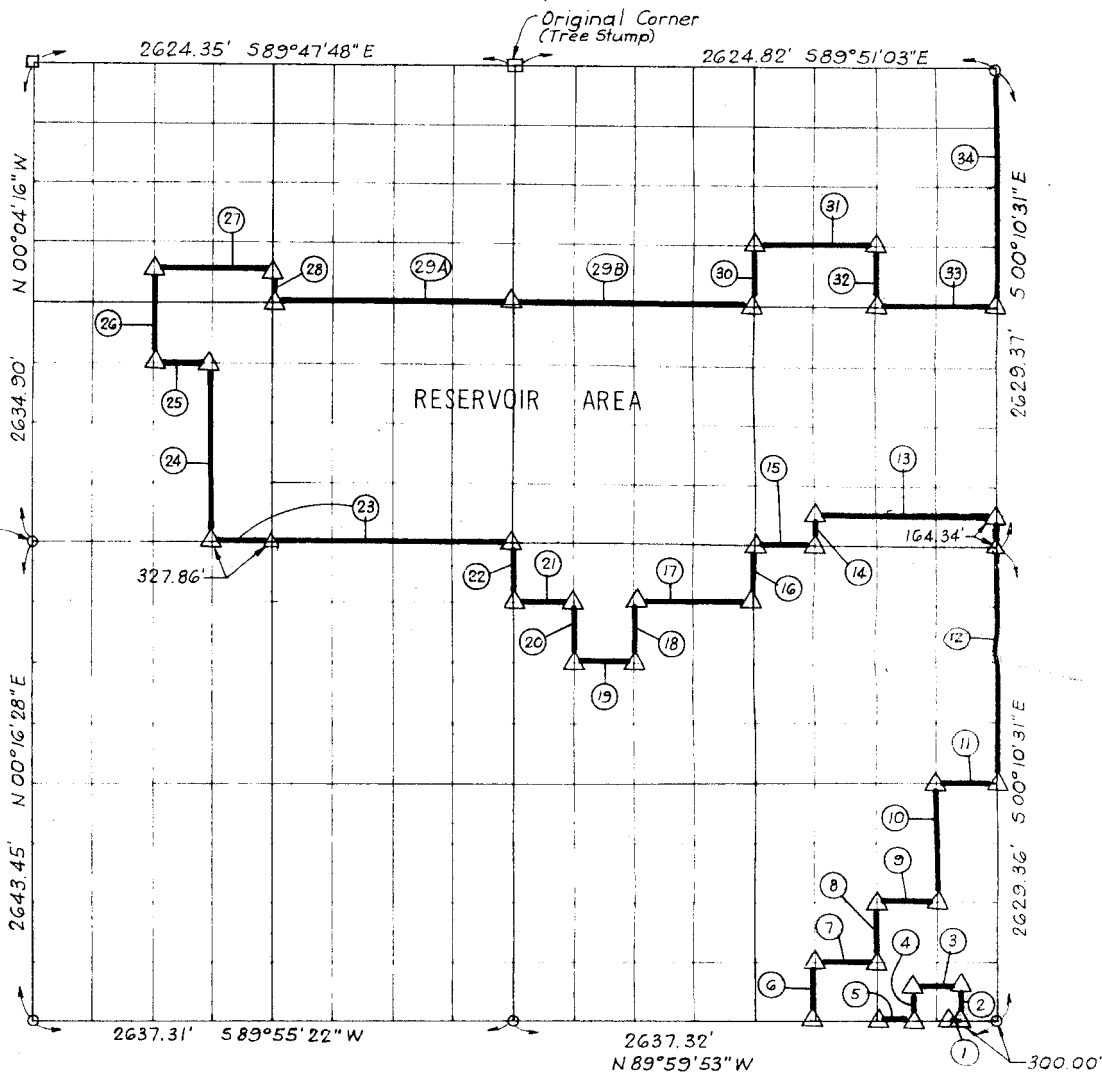


WISTER RESERVOIR

POTEAU RIVER, OKLAHOMA

PARTIAL BOUNDARY SURVEYS OF SECTION 27, T 5 N. R 24 E. LEFLORE COUNTY.



COURSE	DISTANCE	BEARING	COURSE	DISTANCE	BEARING
1	24.00'	S 89° 59' 53" E	20	329.24'	N 00° 03' 22" W
2	200.00'	N 00° 00' 07" E	21	328.98'	N 89° 53' 55" W
3	200.00'	N 89° 59' 53" W	22	329.32'	N 00° 02' 21" W
4	200.00'	S 00° 00' 07" W	23	1639.29'	N 89° 53' 04" W
5	159.33'	N 89° 59' 53" W	24	987.52'	N 00° 03' 32" W
6	328.91'	N 00° 07' 27" W	25	327.93'	N 89° 51' 05" W
7	329.57'	S 89° 59' 02" E	26	493.86'	N 00° 03' 47" W
8	328.83'	N 00° 08' 28" W	27	655.92'	S 89° 50' 06" E
9	329.47'	S 89° 58' 11" E	28	164.56'	S 00° 03' 18" E
10	657.50'	N 00° 09' 30" W	29 A	1311.80'	S 89° 50' 26" E
11	329.27'	S 89° 56' 29" E	29 B	1313.97'	S 89° 52' 04" E
12	1479.02'	N 00° 10' 31" W	30	328.76'	N 00° 06' 26" W
13	986.50'	N 89° 52' 57" W	31	656.79'	S 89° 51' 49" E
14	164.37'	S 00° 07' 27" E	32	328.72'	S 00° 08' 29" E
15	328.88'	N 89° 53' 04" W	33	656.99'	S 89° 52' 04" E
16	329.00'	S 00° 06' 26" E	34	1314.68'	N 00° 10' 31" W
17	657.96'	N 89° 53' 55" W			
18	329.16'	S 00° 04' 23" E			
19	329.08'	N 89° 54' 46" W			

SURVEY BOOK 1-219

LEGEND
 ▲ C & E MONUMENT ● HWY DEPT MON
 □ ORIGINAL STONE ○ IRON PIN

CONTRACT NO. DACW 56-73-C-0181

PERFORMED UNDER SUPERVISION OF
 US ARMY ENGINEER DISTRICT, TULSA
 CORPS OF ENGINEERS

BY

SLADE & ASSOCIATES

CONSULTING ENGINEERS
 8 NW 6TH STREET - P.O. BOX 14130
 OKLAHOMA CITY, OKLA. 73114

CERTIFICATE OF SURVEY

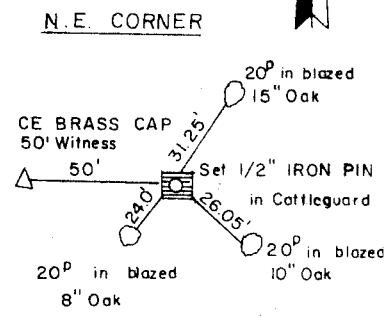
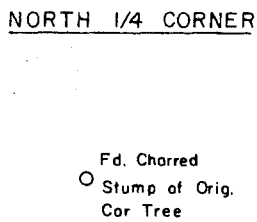
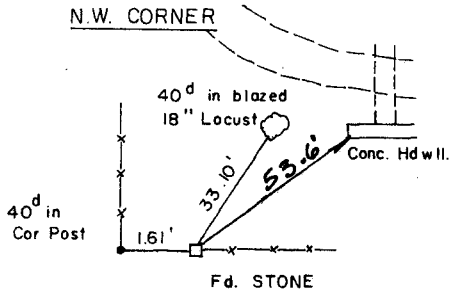
THIS DRAWING CORRECTLY REPRESENTS A SECTION SURVEY
 COMPLETED UNDER MY SUPERVISION

James L. Slade
 JAMES L. SLADE
 REGISTERED LAND SURVEYOR

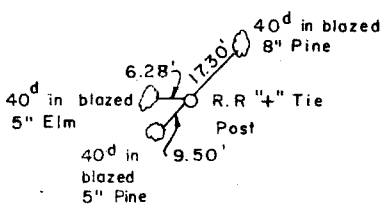
1-10-74

WISTER RESERVOIR
 POTEAU RIVER, OKLAHOMA

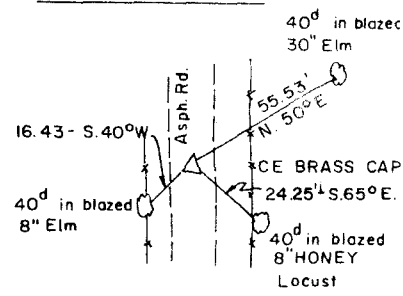
SECTION AND QUARTER SECTION CORNER
 REFERENCES FOR
 SEC. 27 T 5 N, R 24 E, I.M. LEFLORE COUNTY



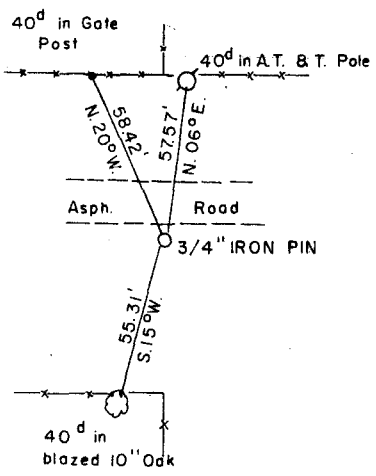
WEST 1/4 CORNER



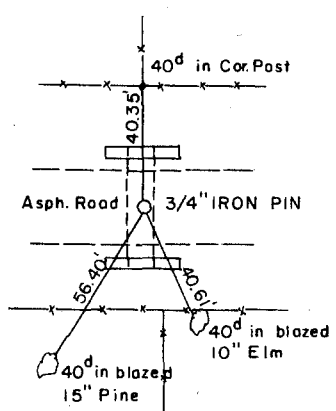
EAST 1/4 CORNER



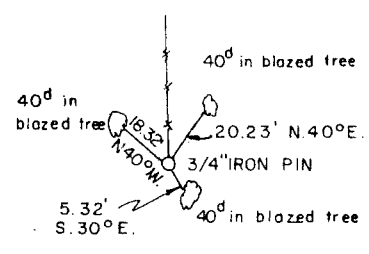
S.W. CORNER



SOUTH 1/4 CORNER



S.E. CORNER



James R. Slade

Scale: 1" = 50'
 Date: 1-10-74
 Field Book No. 1-219

- LEGEND**
- △ Monument
 - Original Corner
 - Iron Pin