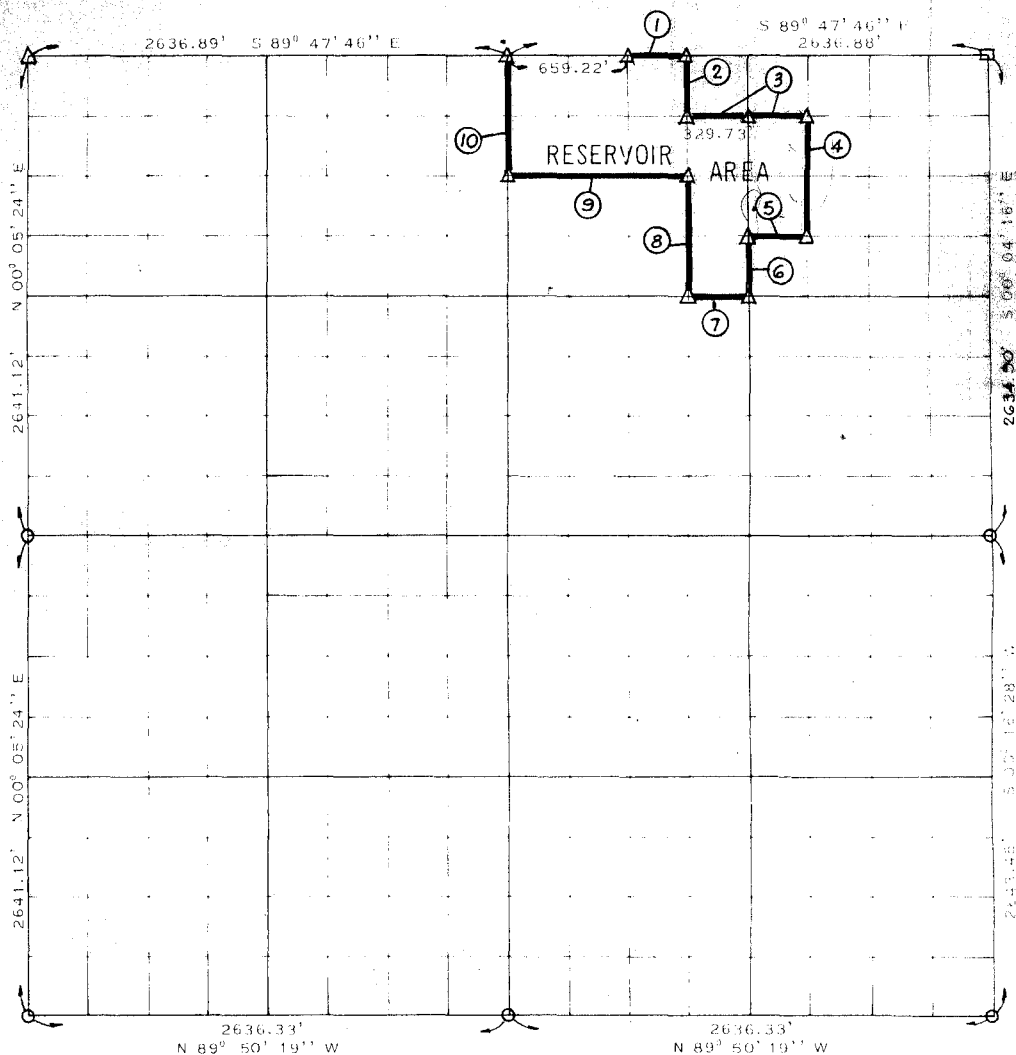


WISTER RESERVOIR POTEAU RIVER, OKLAHOMA

PARTIAL BOUNDARY SURVEYS OF SECTION 28 T 5 N R 24 E LEFLORE COUNTY



COURSE	DISTANCE	BEARING	COURSE	DISTANCE	BEARING
1	329.61'	S 89° 47' 46'' E			
2	329.60'	S 00° 02' 00'' W			
3	659.46'	S 89° 48' 17'' E			
4	659.02'	S 00° 00' 30'' E			
5	329.97'	N 89° 49' 18'' W			
6	329.56'	S 00° 00' 45'' W			
7	330.09'	N 89° 49' 48'' W			
8	659.21'	N 00° 02' 00'' E			
9	989.55'	N 89° 48' 47'' W			
10	659.50'	N 00° 05' 45'' E			
5275.57 = .99					

SURVEY BK 1-220

LEGEND

- △ C E MONUMENT ● HWY DEPT MON
- ORIGINAL STONE ○ IRON PIN

CONTRACT NO. DACW 56-73-C-0181

PERFORMED UNDER SUPERVISION OF
US ARMY ENGINEER DISTRICT, TULSA
CORPS OF ENGINEERS

BY

SLADE & ASSOCIATES

CONSULTING ENGINEERS
OKLAHOMA CITY, OKLA. 73106

CERTIFICATE OF SURVEY

THIS DRAWING CORRECTLY REPRESENTS A SECTION SURVEY
COMPLETED UNDER MY SUPERVISION

James L. Slade
JAMES L. SLADE

REGISTERED LAND SURVEYOR

OKLAHOMA NO. 4

1-10-74

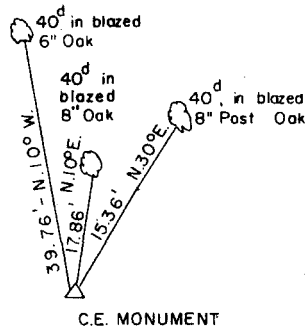
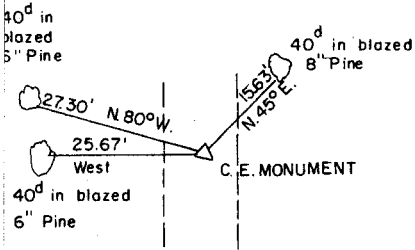
WISTER RESERVOIR
 POTEAU RIVER, OKLAHOMA

SECTION AND QUARTER SECTION CORNER
 REFERENCES FOR
 SEC. 28 T 5 N, R 24 E, I.M. LEFLORE COUNTY.

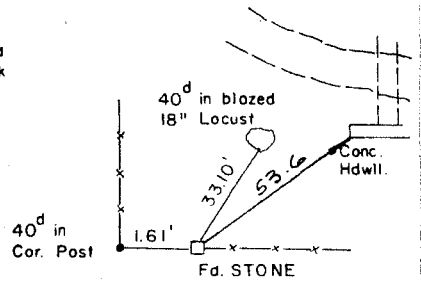


NORTH 1/4 CORNER

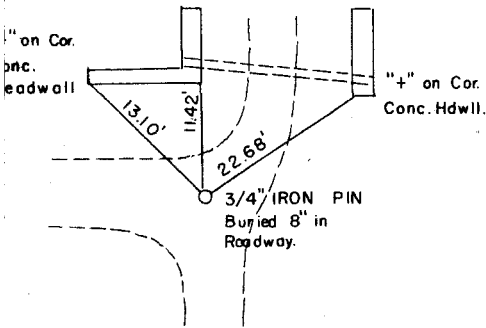
N. W. CORNER



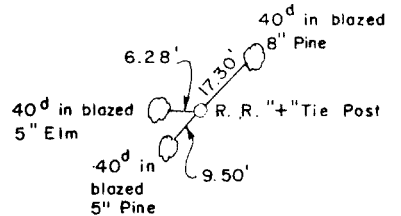
N. E. CORNER



WEST 1/4 CORNER

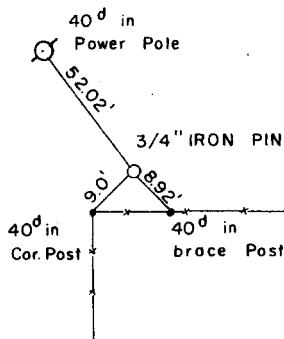
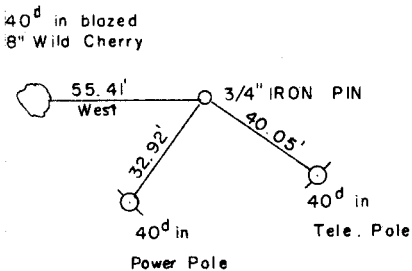


EAST 1/4 CORNER

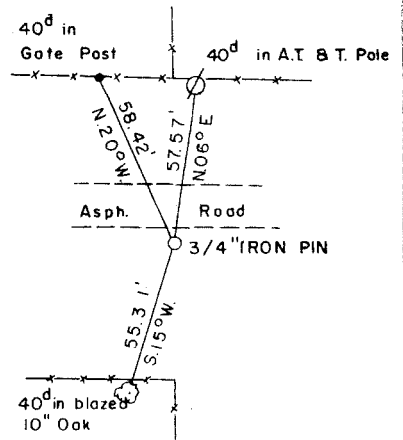


SOUTH 1/4 CORNER

S. W. CORNER



S. E. CORNER



James R. Slade

Scale: 1" = 50'
 Date: 1-10-74
 Field Book No. 1-220

LEGEND

- △ Monument
- Original Corner
- Iron Pin