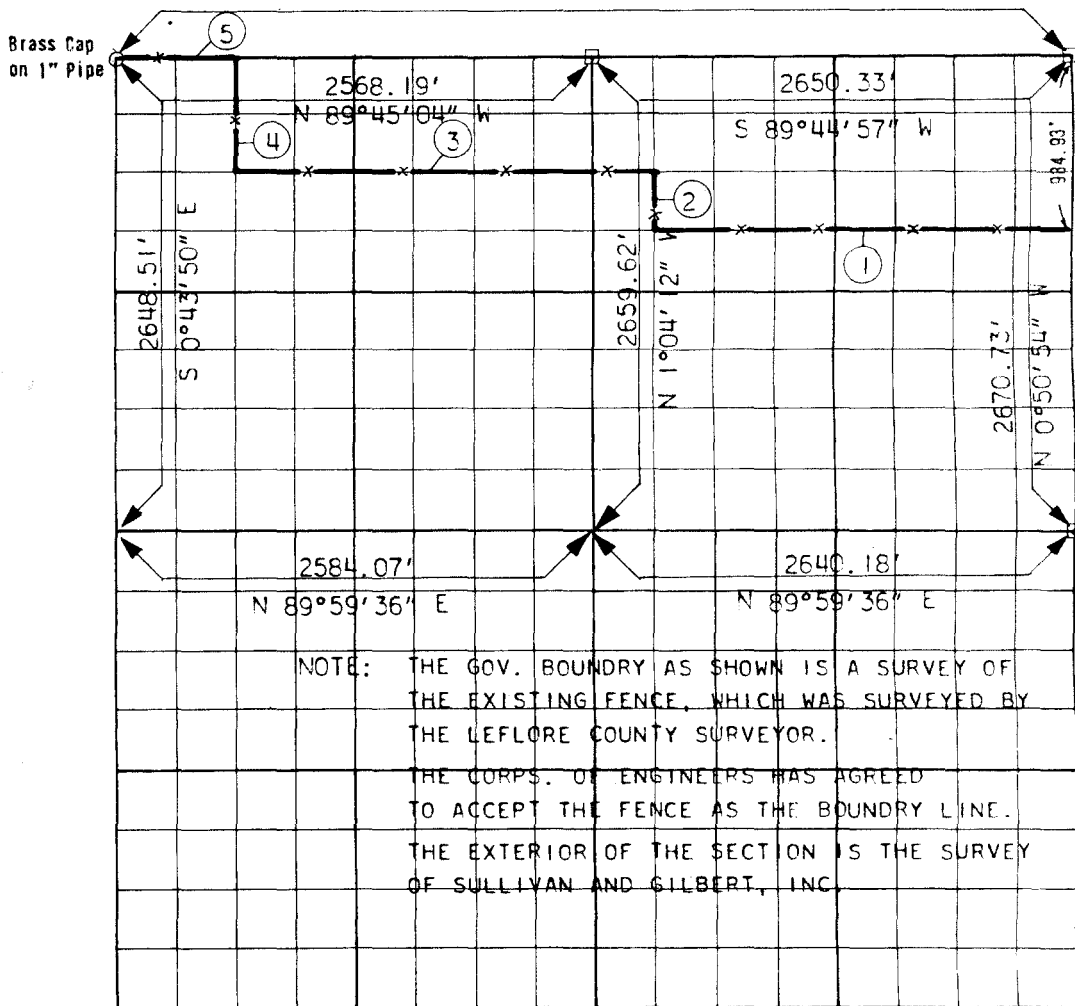


**PARTIAL BOUNDARY SURVEYS
WISTER RESERVOIR
POTEAU RIVER, OKLAHOMA**

Performed Under Contract Number **DACW56-70-C-0086**

SEC 6 T 5 N R 24 E COUNTY LEFLORE



Course No.	Distance	Bearing	Course No.	Distance	Bearing
1	2322.16'	S 89°45'39" W			
2	327.44'	N 0°34'21" W			
3	2275.67'	S 89°45'22" W			
4	655.36'	N 0°31'51" W			
5	622.51'	S 89°53'01" W			

CERTIFICATE OF SURVEY Field Book No. 1-165 Date 7-18-70

I HEREBY CERTIFY THAT THE ABOVE PLAT IS A TRUE AND CORRECT REPRESENTATION OF THE SURVEY MADE IN SECTION 6, T 5 N, R 24 E LEFLORE COUNTY, OKLAHOMA.

SULLIVAN & GILBERT, INC.

Under the Supervision of

**U.S. ARMY ENGINEER DISTRICT, TULSA
CORPS OF ENGINEERS**

LEGEND
 Δ MONUMENT
 □ ORIGINAL CORNER
 ○ IRON PIN

[Signature]
 REGISTERED PROFESSIONAL ENGINEER