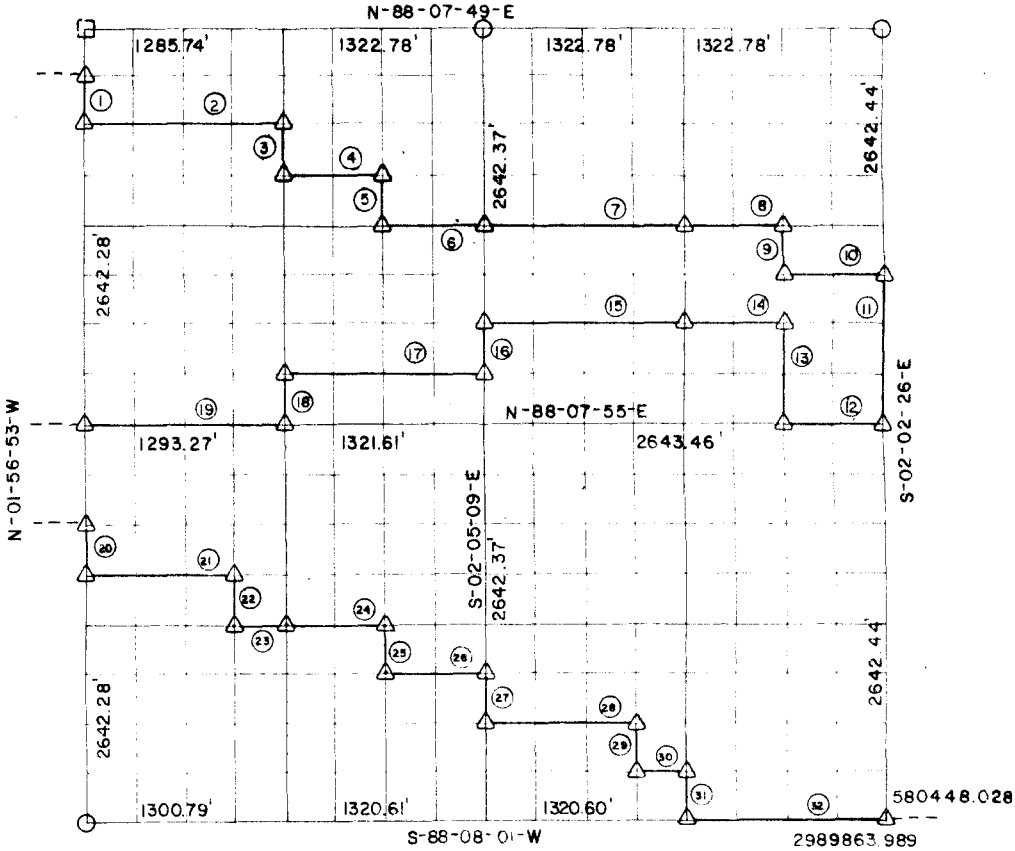


RECORD BOUNDARY PLAT WISTER LAKE POTEAU RIVER OKLAHOMA

GN TN
01-52-07-395

SEC. 19 T 5N R 25E LE FLORE COUNTY



NOTE: ALL BEARINGS AND DISTANCE ARE GRID

Course No.	Distance	Bearing	Course No.	Distance	Bearing
1	330.28'	S-01-56-53-E	27	330.30'	S-02-08-09-E
2	1287.63'	N-88-07-51-E	28	990.67'	N-88-07-59-E
3	330.28'	S-02-08-40-E	29	330.30'	S-02-04-03-E
4	661.10'	N-88-07-52-E	30	330.19'	N-88-07-60-E
5	330.30'	S-02-05-55-E	31	330.30'	S-02-03-41-E
6	661.10'	N-88-07-52-E	32	1320.77'	N-88-08-01-E
7	1322.25'	N-88-07-52-E			
8	661.10'	N-88-07-52-E			
9	330.30'	S-02-03-07-E			
10	661.06'	N-88-07-53-E			
11	990.91'	S-02-02-26-E			
12	660.87'	S-88-07-55-W			
13	660.61'	S-02-03-07-W			
14	661.00'	S-88-07-54-W			
15	1321.99'	S-88-07-54-W			
16	330.30'	S-02-05-09-E			
17	1321.75'	S-88-07-54-W			
18	330.28'	S-02-06-40-E			
19	1293.27'	S-88-07-55-W			
20	330.28'	S-01-56-53-E			
21	983.60'	N-88-07-57-E			
22	330.29'	S-01-56-53-E			
23	333.43'	N-88-07-58-E			
24	660.61'	N-88-07-58-E			
25	330.30'	S-02-06-08-E			
26	660.42'	N-88-07-59-E			

CERTIFICATE OF SURVEY Field Book No. 1-221 Date SEP 1977

I HEREBY CERTIFY THAT THE ABOVE
PLAT IS A TRUE AND CORRECT
REPRESENTATION OF THE SURVEY
OF THE ABOVE SECTION

Billy L. Curtis
REGISTERED LAND SURVEYOR NO. 603

CURTIS & GUINN SURVEYING
STONEWALL, OKLA.

Under the Supervision of
U.S. ARMY CORPS OF ENGINEERS
TULSA DISTRICT, OKLAHOMA

- LEGEND
- △ --- MONUMENT SET
 - ▲ --- MONUMENT FOUND
 - --- ORIGINAL CORNER
 - --- IRON PIN FOUND
 - --- IRON PIN SET

WISTE LAKE POTEAU RIVER OKLAHOMA

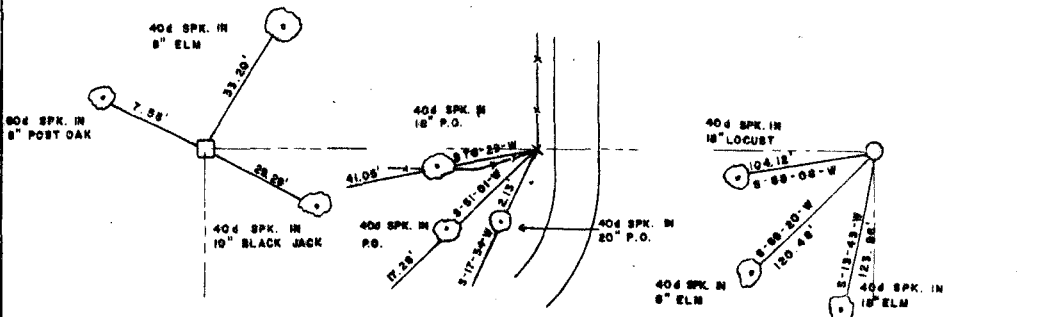
SECTION AND QUARTER SECTION CORNER
REFERENCES FOR

SEC. 19 T.5 N., R.25E., 1 M., COUNTY-LE FLORE

N.W. CORNER

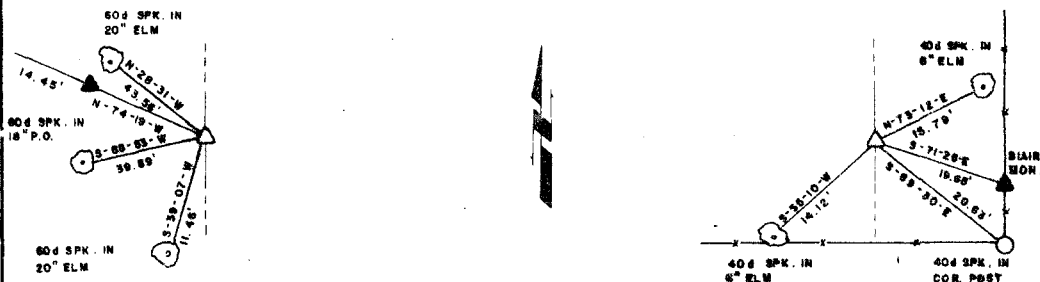
N.E. CORNER

NORTH 1/4 COR.



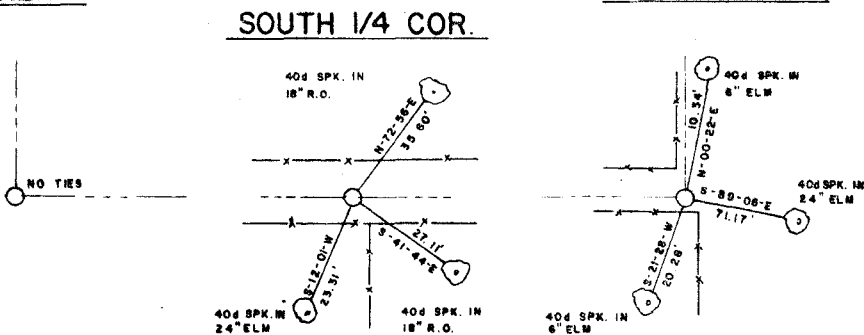
WEST 1/4 COR.

EAST 1/4 COR.



S.W. CORNER

S.E. CORNER



SOUTH 1/4 COR.

Field Book No. 1-221

Date SEP. 1977

LEGEND

- ▲ — MONUMENT FOUND
- △ — MONUMENT SET
- — ORIGINAL CORNER
- — IRON PIN FOUND
- — IRON PIN SET

CURTIS & GUINN SURVEYING
STONEWALL, OKLA.

Bobby L. Curtis
REGISTERED LAND SURVEYOR NO. 603

Under the Supervision of
U.S. ARMY CORPS OF ENGINEERS
TULSA DISTRICT, OKLAHOMA