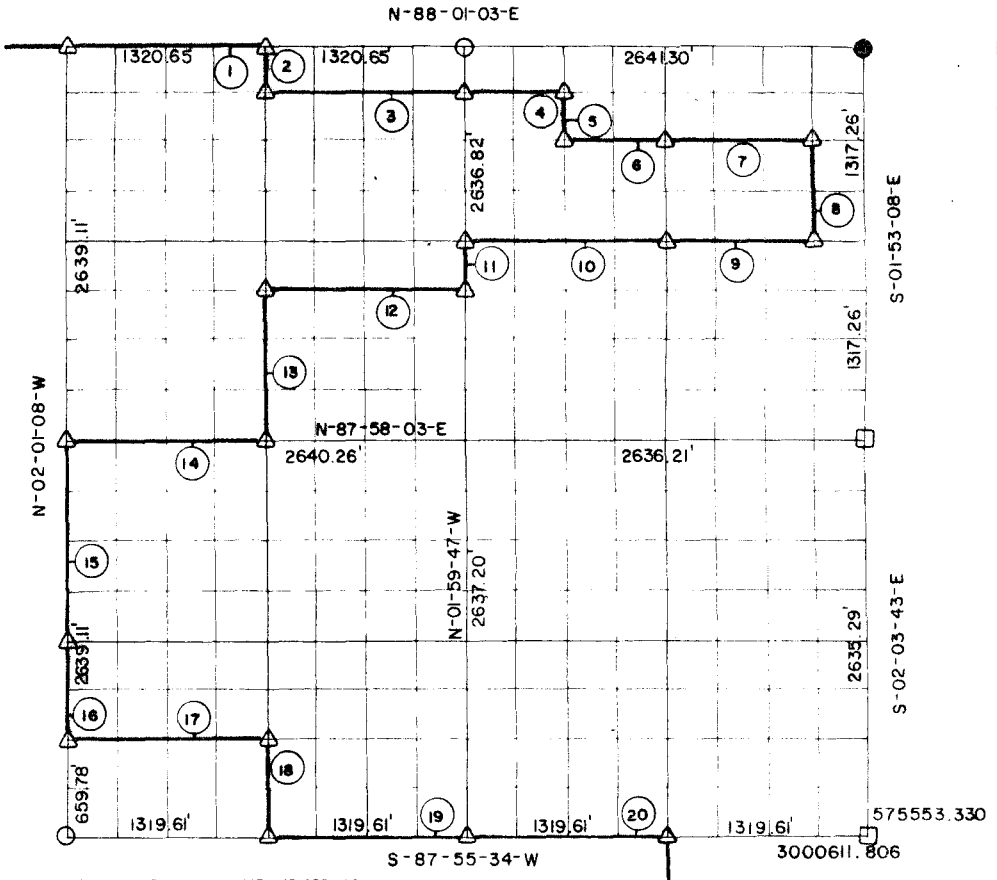


RECORD BOUNDARY PLAT WISTER LAKE POTEAU RIVER OKLAHOMA



SEC. 28 T 5N R 25E LE FLORE COUNTY



NOTE: ALL BEARINGS AND DISTANCE ARE GRID

Course No.	Distance	Bearing	Course No.	Distance	Bearing
1	1320.65'	N-88-01-03-E	14	1320.13'	S-87-58-03-W
2	329.75'	S-02-00-28-E	15	1319.56'	S-02-01-08-E
3	1320.59'	N-88-00-40-E	16	659.78'	S-02-01-08-E
4	660.17'	N-88-00-41-E	17	1319.74'	N-87-56-11-E
5	329.53'	S-01-58-08-E	18	659.54'	S-02-00-28-E
6	660.01'	N-88-00-18-E	19	1319.61'	N-87-55-34-E
7	990.01'	N-88-00-18-E	20	1319.61'	N-87-55-34-E
8	658.70'	S-01-53-58-E			
9	989.53'	S-87-59-33-W			
10	1319.39'	S-87-59-33-W			
11	329.60'	S-01-59-47-E			
12	1320.33'	S-87-59-11-W			
13	989.24'	S-02-00-28-E			

CERTIFICATE OF SURVEY Field Book No. I-236 Date SEP. 1977

I HEREBY CERTIFY THAT THE ABOVE
PLAT IS A TRUE AND CORRECT

CURTIS & GUINN SURVEYING
STONEWALL, OKLA.

LEGEND

- △ — MONUMENT SET
- ▲ — MONUMENT FOUND
- — ORIGINAL CORNER
- — IRON PIN FOUND
- — IRON PIN SET

REPRESENTATION OF THE SURVEY
OF THE ABOVE SECTION

Bddy L. Curtis

REGISTERED LAND SURVEYOR, NO. 803

Under the Supervision of
U.S. ARMY CORPS OF ENGINEERS
TULSA DISTRICT, OKLAHOMA

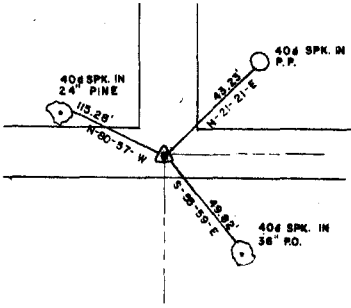
SHEET 1 of 2

WISTE LAKE
 POTEAU RIVER OKLAHOMA

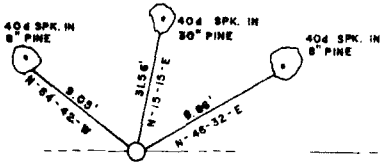
SECTION AND QUARTER SECTION CORNER
 REFERENCES FOR

SEC. 28 T.5N., R.25E., 1 M., COUNTY-LE FLORE

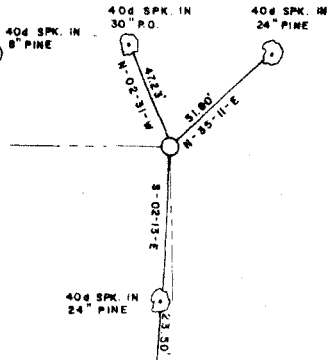
N.W. CORNER



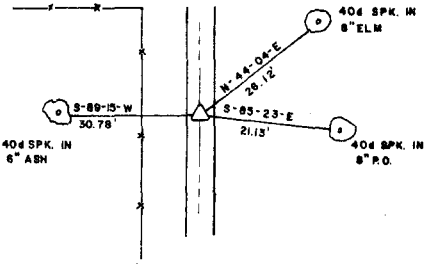
NORTH 1/4 COR.



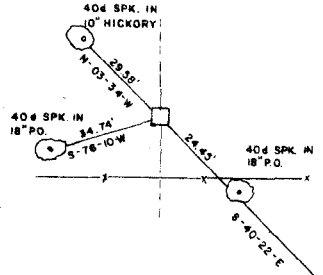
N.E. CORNER



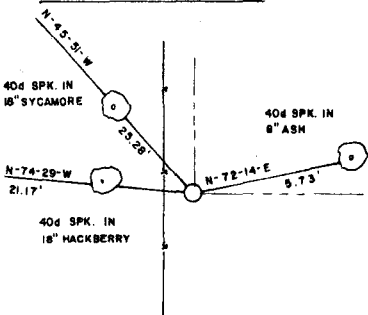
WEST 1/4 COR.



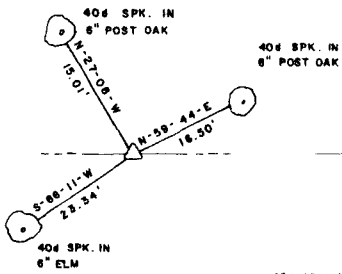
EAST 1/4 COR.



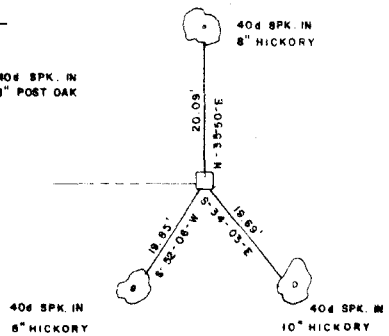
S.W. CORNER



SOUTH 1/4 COR.



S.E. CORNER



Field Book No. J-236 Date SEP. 1977

LEGEND

- ▲ — MONUMENT FOUND
- △ — MONUMENT SET
- — ORIGINAL CORNER
- — IRON PIN FOUND
- — IRON PIN SET

CURTIS & GUINN SURVEYING
 STONEWALL, OKLA.

Bobby L. Curtis
 REGISTERED LAND SURVEYOR NO. 603

Under the Supervision of
 U.S. ARMY CORPS OF ENGINEERS
 TULSA DISTRICT, OKLAHOMA