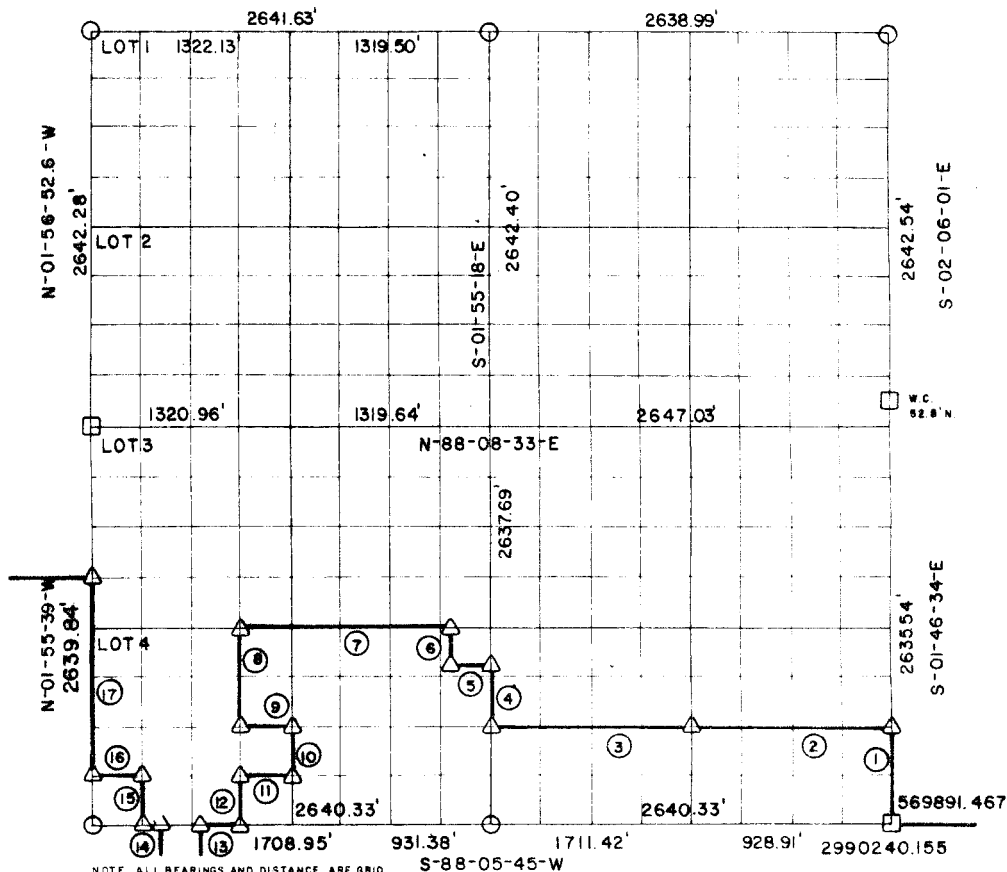


# RECORD BOUNDARY PLAT WISTER LAKE POTEAU RIVER OKLAHOMA

01-52-7.669

SEC. 31      T 5N      R 25E      LE FLORE COUNTY

N-88-08-23.7-E



NOTE: ALL BEARINGS AND DISTANCE ARE GRID

Course No.	Distance	Bearing	Course No.	Distance	Bearing
1	658.89'	N-01-46-34-W	14	58.74'	S-88-05-43-W
2	1321.00'	S-88-06-51-W	15	329.95'	N-01-55-24-W
3	1321.00'	S-88-06-03-W	16	330.07'	S-88-06-06-W
4	450.71'	N-01-55-18-W	17	1319.92'	N-01-55-39-W
5	208.71'	S-88-07-09-W			
6	208.71'	N-01-55-17-W			
7	1441.33'	S-88-07-09-W			
8	659.76'	S-01-54-53-E			
9	330.09'	N-88-06-27-E			
10	329.85'	S-01-54-38-E			
11	330.07'	S-88-06-06-W			
12	329.88'	S-01-54-53-E			
13	271.34'	S-88-05-45-W			

CERTIFICATE OF SURVEY    Field Book No. J-241      Date SEP. 1977

I HEREBY CERTIFY THAT THE ABOVE  
PLAT IS A TRUE AND CORRECT  
REPRESENTATION OF THE SURVEY

OF THE ABOVE SECTION  
*Billy J. Curtis*  
REGISTERED LAND SURVEYOR NO 803

CURTIS & GUINN SURVEYING  
STONEWALL, OKLA.

Under the Supervision of  
U.S. ARMY CORPS OF ENGINEERS  
TULSA DISTRICT, OKLAHOMA

SHEET 1 of 2

**LEGEND**

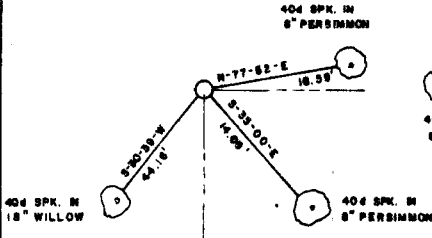
- △ — MONUMENT SET
- ▲ — MONUMENT FOUND
- — ORIGINAL CORNER
- — IRON PIN FOUND
- — IRON PIN SET

# WISTE LAKE POTEAU RIVER OKLAHOMA

SECTION AND QUARTER SECTION CORNER  
REFERENCES FOR

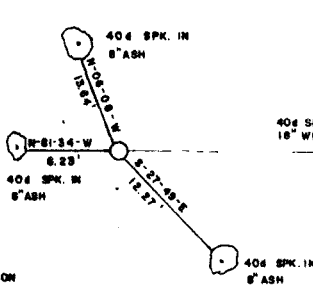
SEC. 31 T.5N., R.25E., 1M., COUNTY-LE FLORE

N.W. CORNER

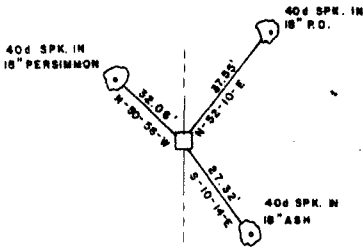


N.E. CORNER

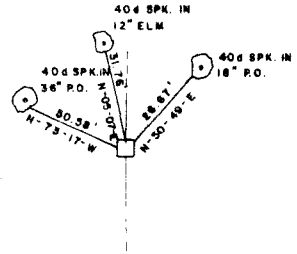
NORTH 1/4 COR.



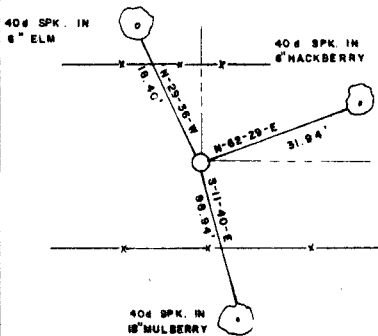
WEST 1/4 COR.



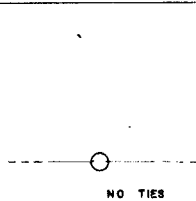
EAST 1/4 COR.



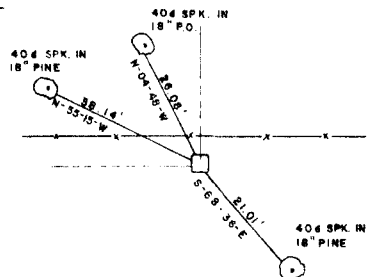
S.W. CORNER



SOUTH 1/4 COR.



S.E. CORNER



Field Book No. 1-241 Date SEP. 1977

**LEGEND**

- ▲ -- MONUMENT FOUND
- △ -- MONUMENT SET
- -- ORIGINAL CORNER
- -- IRON PIN FOUND
- -- IRON PIN SET

CURTIS & GUINN SURVEYING  
STONEWALL, OKLA.

*Billy L. Curtis*  
REGISTERED LAND SURVEYOR NO. 603

Under the Supervision of  
U.S. ARMY CORPS OF ENGINEERS  
TULSA DISTRICT, OKLAHOMA