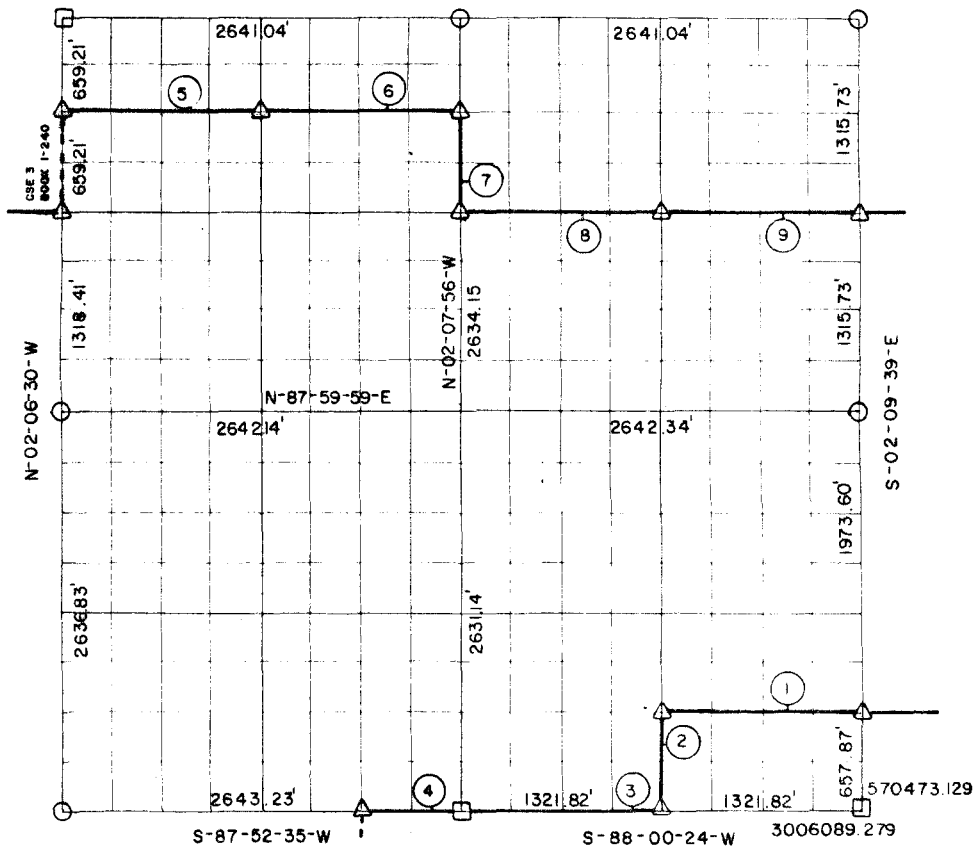


# RECORD BOUNDARY PLAT WISTER LAKE POTEAU RIVER OKLAHOMA



SEC. 34      T 5N      R 25E      LE FLORE COUNTY

N-88-03-30-E



NOTE: ALL BEARINGS AND DISTANCE ARE GRID

Course No.	Distance	Bearing	Course No.	Distance	Bearing
1	1321.66'	S-88-00-18-W			
2	657.83'	S-02-08-48-E			
3	1321.82'	S-88-00-24-W			
4	601.74'	S-87-52-36-W			
5	1320.66'	N-88-02-36-E			
6	1320.66'	N-88-02-37-E			
7	658.54'	S-02-07-57-E			
8	1320.85'	N-88-01-45-E			
9	1320.85'	N-88-01-45-E			
	9844.62	1.186			

CERTIFICATE OF SURVEY    Field Book No. 1-239      Date SEP. 1977

I HEREBY CERTIFY THAT THE ABOVE  
PLAT IS A TRUE AND CORRECT  
REPRESENTATION OF THE SURVEY  
OF THE ABOVE SECTION

CURTIS & GUINN SURVEYING  
STONEWALL, OKLA.

Under the Supervision of  
**U.S. ARMY CORPS OF ENGINEERS**  
TULSA DISTRICT, OKLAHOMA

SHEET 1 of 2

LEGEND

- MONUMENT SET
- MONUMENT FOUND
- ORIGINAL CORNER
- IRON PIN FOUND
- IRON PIN SET

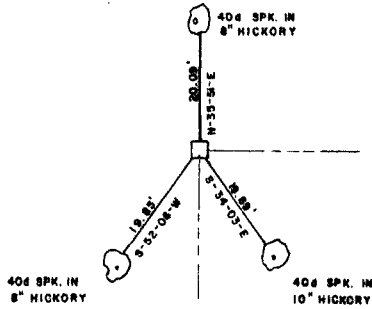
*Bobby L. Curtis*  
REGISTERED LAND SURVEYOR NO. 803

WISTEY LAKE  
 POTEAU RIVER OKLAHOMA

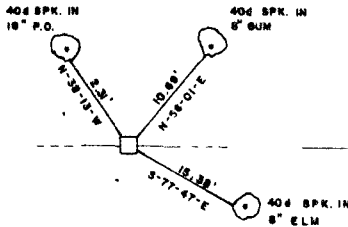
SECTION AND QUARTER SECTION CORNER  
 REFERENCES FOR

SEC. 34 T.5 N., R.25 E., 1 M., COUNTY-LE FLORE

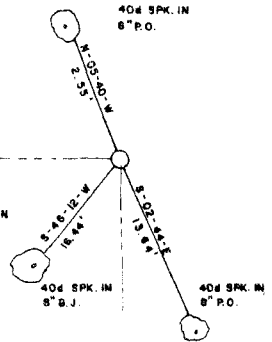
N.W. CORNER



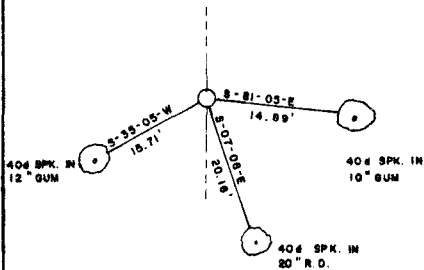
NORTH 1/4 COR.



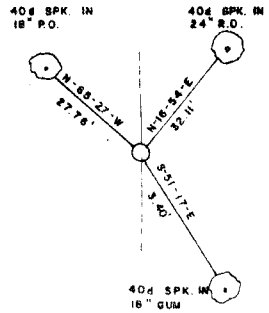
N.E. CORNER



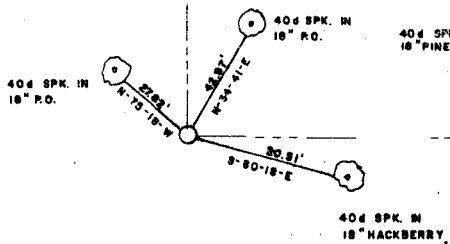
WEST 1/4 COR.



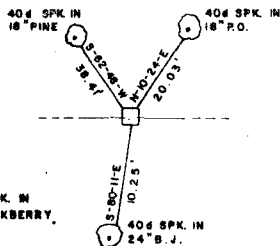
EAST 1/4 COR.



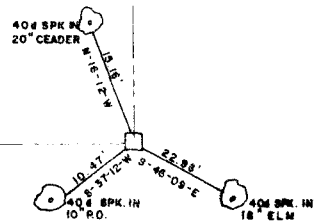
S.W. CORNER



SOUTH 1/4 COR.



S.E. CORNER



Field Book No. J-239 Date SEP. 1977

LEGEND

- ▲ — MONUMENT FOUND
- △ — MONUMENT SET
- — ORIGINAL CORNER
- — IRON PIN FOUND
- — IRON PIN SET

CURTIS & GUINN SURVEYING  
 STONEWALL, OKLA.

*Billy L. Curtis*  
 REGISTERED LAND SURVEYOR NO. 803

Under the Supervision of  
 U.S. ARMY CORPS OF ENGINEERS  
 TULSA DISTRICT, OKLAHOMA