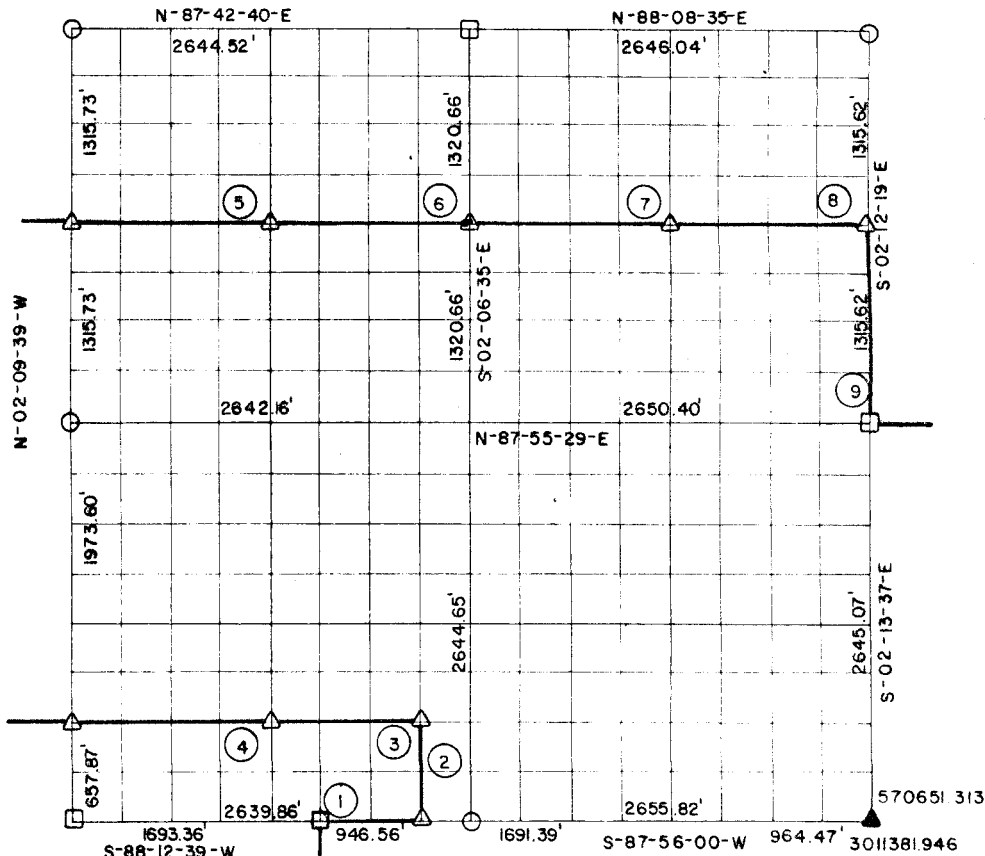


# RECORD BOUNDARY PLAT WISTER LAKE POTEAU RIVER OKLAHOMA

GN TN  
01-54-31.605

SEC. 35      T 5N      R 25E      LE FLORE COUNTY



NOTE: ALL BEARINGS AND DISTANCE ARE GRID

Course No.	Distance	Bearing	Course No.	Distance	Bearing
1	616.59'	N-88-59-12-E			
2	660.75'	N-02-06-58-W			
3	990.16'	S-88-08-22-W			
4	1320.22'	S-88-08-22-W			
5	1321.67'	N-87-49-04-E			
6	1321.67'	N-87-49-04-E			
7	1324.11'	N-88-02-02-E			
8	1322.39'	N-88-02-02-E			
9	1315.62'	S-02-16-49-E			

10193.12 = 1.02

CERTIFICATE OF SURVEY    Field Book No. 1-238    Date SEP. 1977

I HEREBY CERTIFY THAT THE ABOVE  
PLAT IS A TRUE AND CORRECT

CURTIS & GUINN SURVEYING  
STONEWALL, OKLA.

LEGEND

REPRESENTATION OF THE SURVEY  
OF THE ABOVE SECTION

Under the Supervision of  
U.S. ARMY CORPS OF ENGINEERS  
TULSA DISTRICT, OKLAHOMA

- △ — MONUMENT SET
- ▲ — MONUMENT FOUND
- — ORIGINAL CORNER
- — IRON PIN FOUND
- — IRON PIN SET

*Billy J. Curtis*  
REGISTERED LAND SURVEYOR NO. 603

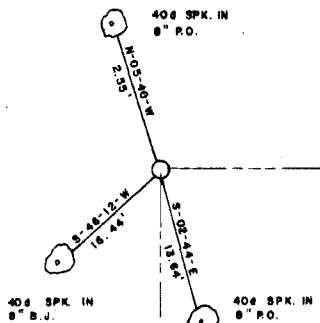
SHEET 1 of 2

WISTE LAKE  
 POTEAU RIVER OKLAHOMA

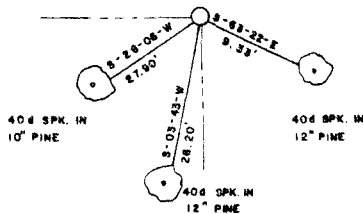
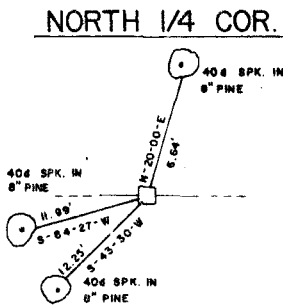
SECTION AND QUARTER SECTION CORNER  
 REFERENCES FOR

SEC. 35 T.5N., R.25E., 1 M., COUNTY-LE FLORE

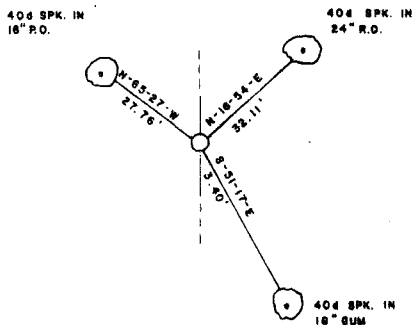
N.W. CORNER



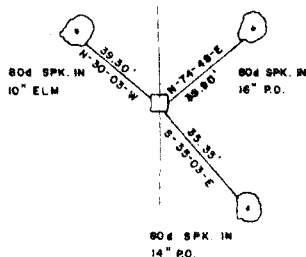
N.E. CORNER



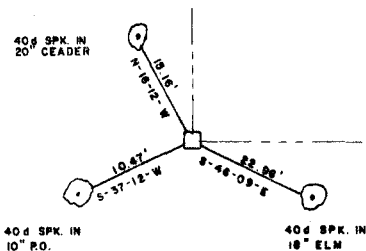
WEST 1/4 COR.



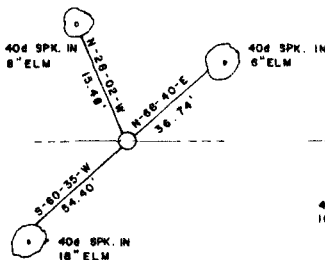
EAST 1/4 COR.



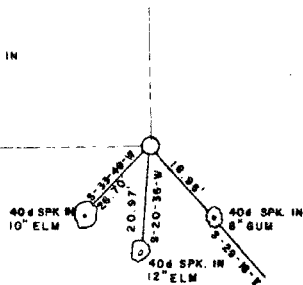
S.W. CORNER



SOUTH 1/4 COR.



S.E. CORNER



Field Book No. 1-238

Date SEP. 1977

LEGEND

- ▲ — MONUMENT FOUND
- △ — MONUMENT SET
- — ORIGINAL CORNER
- — IRON PIN FOUND
- — IRON PIN SET

CURTIS & GUINN SURVEYING  
 STONEWALL, OKLA.

*Bobby L. Curtis*  
 REGISTERED LAND SURVEYOR NO. 663

Under the Supervision of  
 U.S. ARMY CORPS OF ENGINEERS  
 TULSA DISTRICT, OKLAHOMA