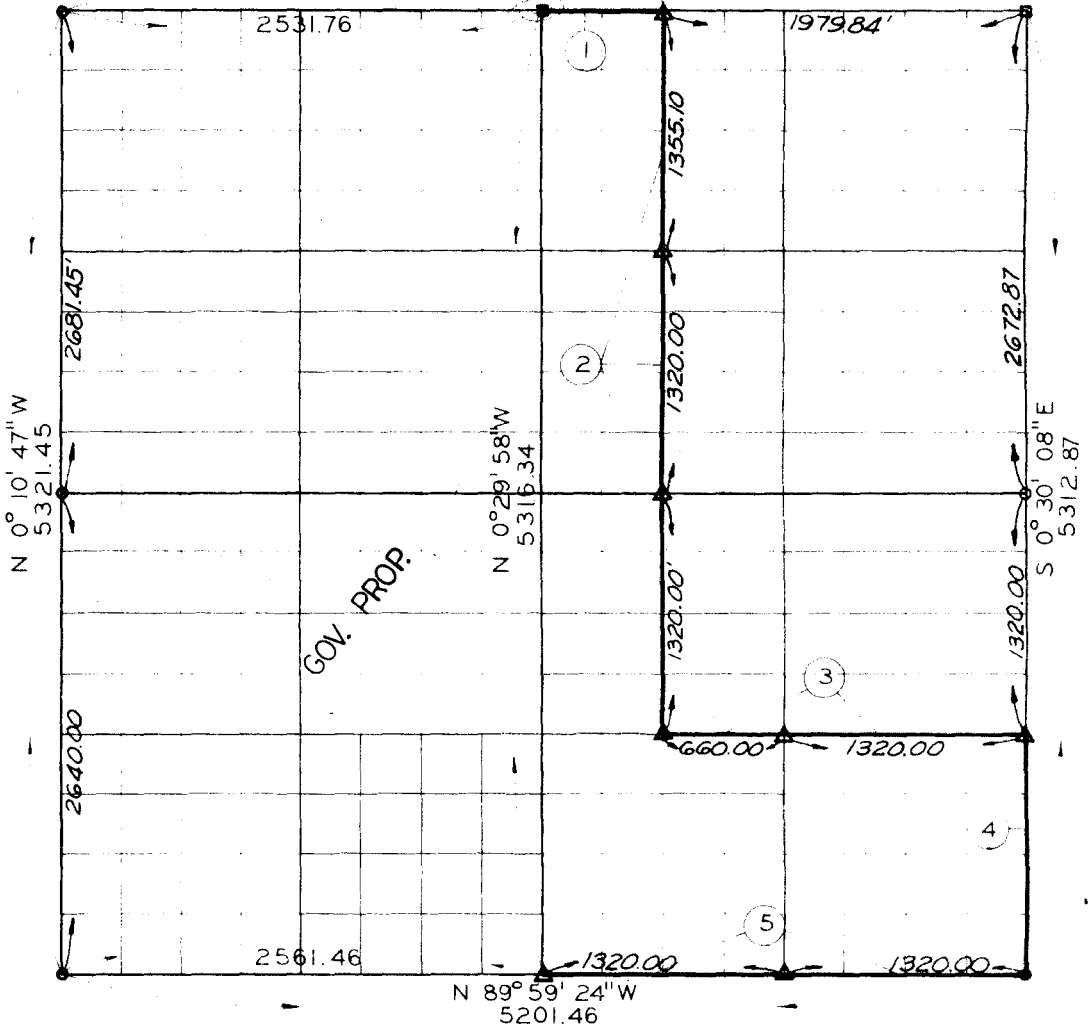


SEC. 6 T-5-N R-25 E COUNTY LE FL RE

S 89° 53' 34" E
5171.55



COURSE NUMBER	DISTANCE	BEARING	COURSE NUMBER	DISTANCE	BEARING
1.	659.95	S89°53'34"E			
2.	3995.10	S00°30'01"E			
3.	1980.00	S89°59'24"E			
4.	1320.00	S00°30'08"E			
5.	2640.00	N89°59'24"W			

Field Book No. 1-149 December 8, 1969

I, Robert C. Poe, a Registered Professional Engineer and a Registered Land Surveyor, do hereby certify that the above plat is a true and accurate survey of Section 6, T-5-N, R-25-E as made under my supervision.

LEGEND

- △ MONUMENT
- ORIGINAL STONE
- IRON PIN

Robert C. Poe
Reg. Prof. Engr. No. 7387
Reg. Land Surveyor No. LS 602