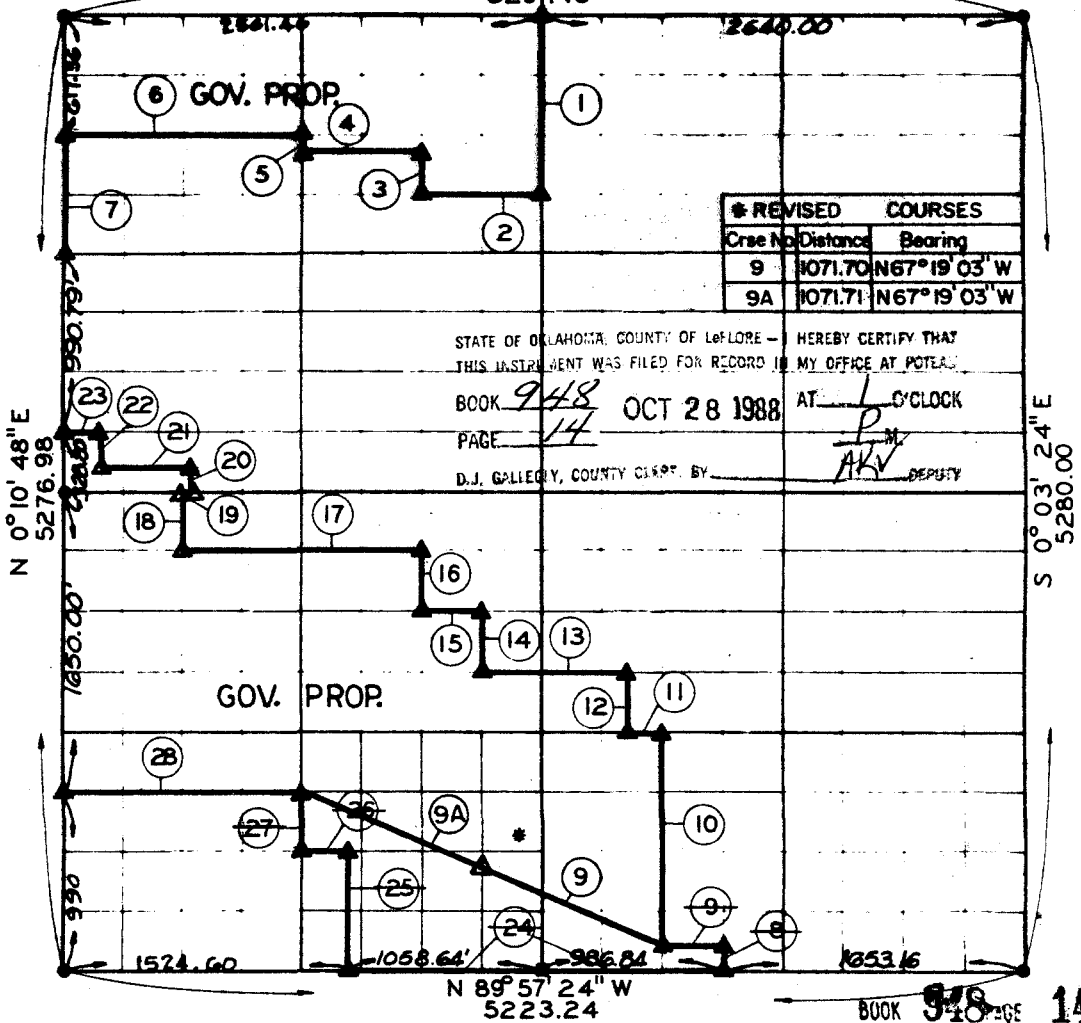


SEC. 7-T-5-N R-25-E COUNTY LE FLORE

10708

S 89° 59' 24" E  
5201.46



COURSE NUMBER	DISTANCE	BEARING	COURSE NUMBER	DISTANCE	BEARING
1.	988.85	S00°03'24"E	15.	330.00	N89°57'24"W
2.	660.00	N89°58'39"W	16.	330.00	N00°03'24"W
3.	329.52	N00°03'24"W	17.	1289.35	N89°57'24"W
4.	660.00	N89°58'54"W	18.	330.00	N00°03'24"W
5.	41.56	N00°03'24"W	19.	33.83	N89°55'53"E
6.	1244.01	N89°58'56"W	20.	165.00	N00°03'24"W
7.	700.03	S00°10'48"W	21.	460.00	S89°55'53"W
8.	165.00	N00°03'24"W	22.	165.00	N00°01'48"E
9.	330.00	N89°57'24"W	23.	102.25	S89°55'53"W
10.	1155.00	N00°03'24"W	24.	2045.48	S89°57'24"E
11.	199.77	N89°57'24"W	25.	660.00	S00°03'24"E
12.	330.00	N00°03'24"W	26.	261.36	S89°57'24"E
13.	790.52	N89°57'24"W	27.	330.00	S00°03'24"E
14.	330.00	N00°03'24"W	28.	1259.15	S89°57'24"E

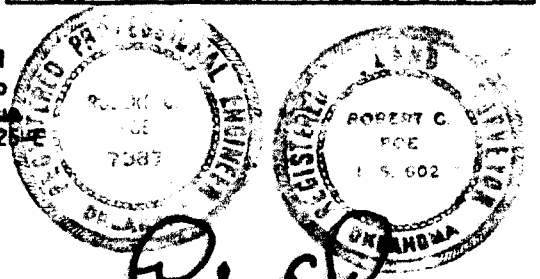
Field Book No. 1-150 December 8, 1969

I, Robert C. Poe, a Registered Professional Engineer and a Registered Land Surveyor, do hereby certify that the above plat is a true and accurate survey of Section 7, T-5-N, R-25-E as made under my supervision.

\* REVISED OCT. 1988 by CUNNINGHAM-DAVIS-STOLDT

LEGEND

- ▲ MONUMENT
- ORIGINAL STONE
- IRON PIN



*Robert C. Poe*  
Robert C. Poe  
Reg. Prof. Engr. No. 7387  
Reg. Land Surveyor No. LS 602

REPRODUCED AT GOVERNMENT EXPENSE