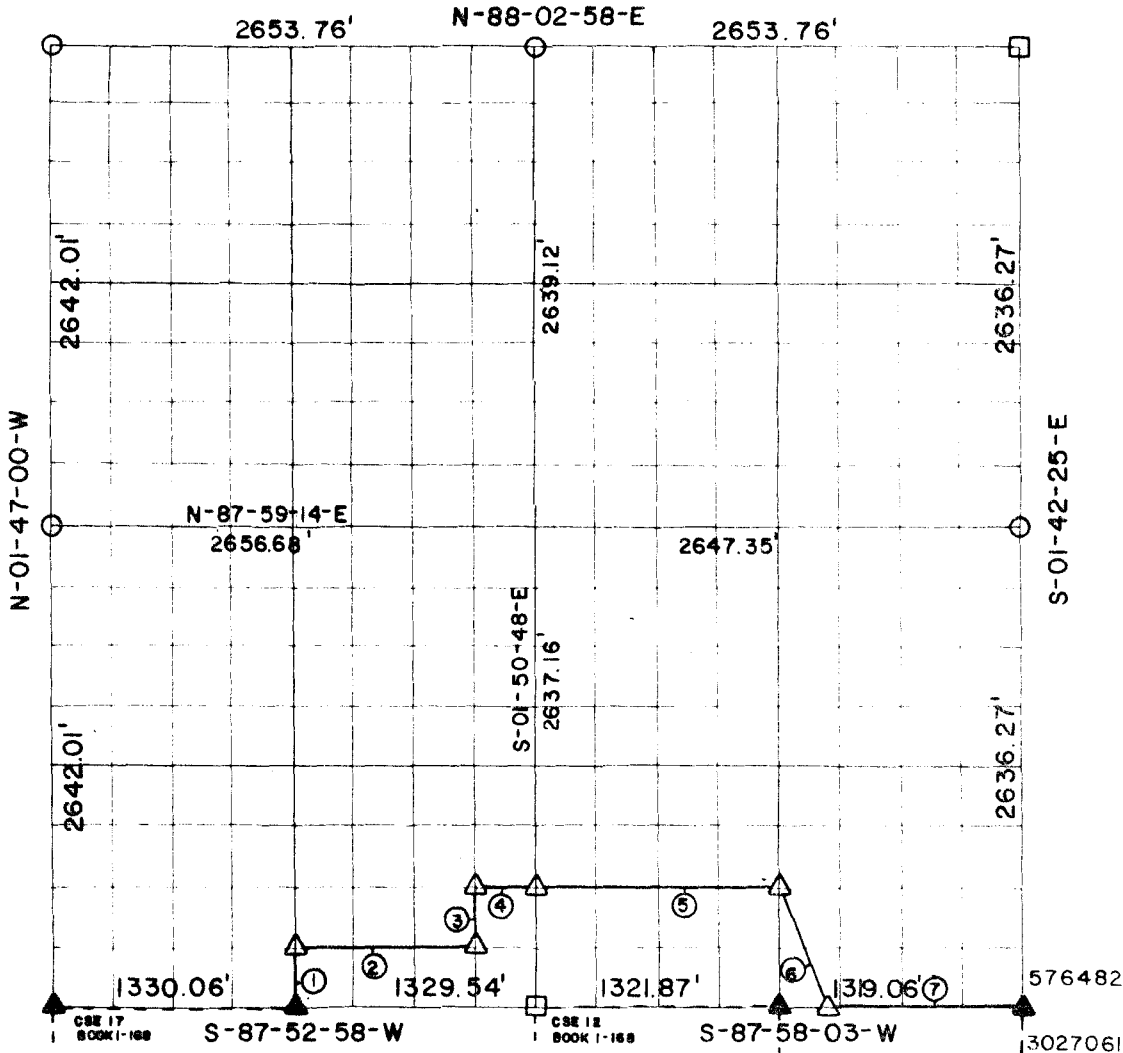


RECORD BOUNDARY PLAT WISTER LAKE POTEAU RIVER OKLAHOMA

01-56-19.873

SEC. 29 T 5N R 26E LE FLORE COUNTY



Course No.	Distance	Bearing	Course No.	Distance	Bearing
1	330.03'	N-01-49-15-W			
2	997.04'	N-87-53-07-E			
3	329.74'	N-01-50-25-W			
4	332.31'	N-87-54-07-E			
5	1324.67'	N-87-59-10-E			
6	710.80'	S-23-57-54-E			
7	1048.62'	N-87-56-25-E			

CERTIFICATE OF SURVEY Field Book No. I-234 Date SEP. 1977

I HEREBY CERTIFY THAT THE ABOVE
PLAT IS A TRUE AND CORRECT
REPRESENTATION OF THE SURVEY
OF THE ABOVE SECTION

CURTIS & GUINN SURVEYING
STONEWALL, OKLA.

LEGEND

- MONUMENT SET
- MONUMENT FOUND
- ORIGINAL CORNER
- IRON PIN FOUND
- IRON PIN SET

Under the Supervision of
U.S. ARMY CORPS OF ENGINEERS
TULSA DISTRICT, OKLAHOMA

Bobby L. Curtis
REGISTERED LAND SURVEYOR NO. 803

SHEET 1 of 2

WISTE LAKE POTEAU RIVER OKLAHOMA

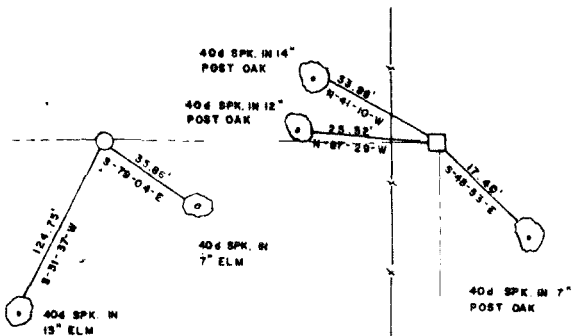
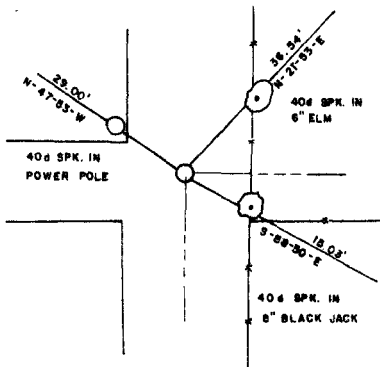
SECTION AND QUARTER SECTION CORNER REFERENCES FOR

SEC. 29 T.5 N., R.26 E., 1 M., COUNTY-LE FLORE

N.W. CORNER

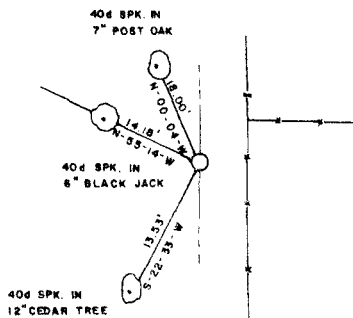
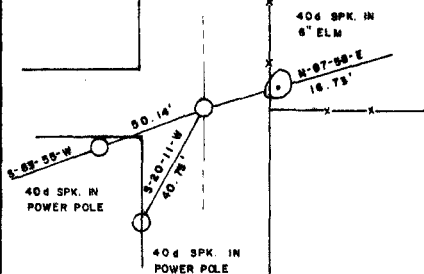
N.E. CORNER

NORTH 1/4 COR.



WEST 1/4 COR.

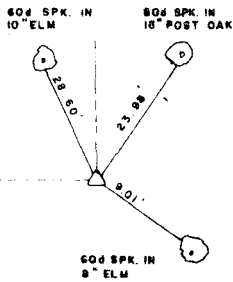
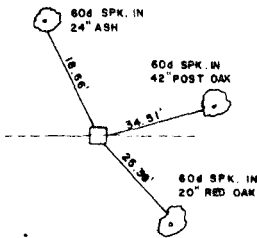
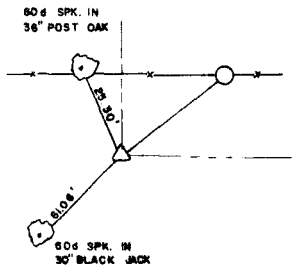
EAST 1/4 COR.



S.W. CORNER

SOUTH 1/4 COR.

S.E. CORNER



Field Book No. J-234 Date SEP. 1977

LEGEND

- ▲ — MONUMENT FOUND
- △ — MONUMENT SET
- — ORIGINAL CORNER
- — IRON PIN FOUND
- — IRON PIN SET

CURTIS & GUNN SURVEYING
STONEWALL, OKLA.

Bobby L. Curtis
REGISTERED LAND SURVEYOR NO. 609

Under the Supervision of
U. S. ARMY CORPS OF ENGINEERS
TULSA DISTRICT, OKLAHOMA