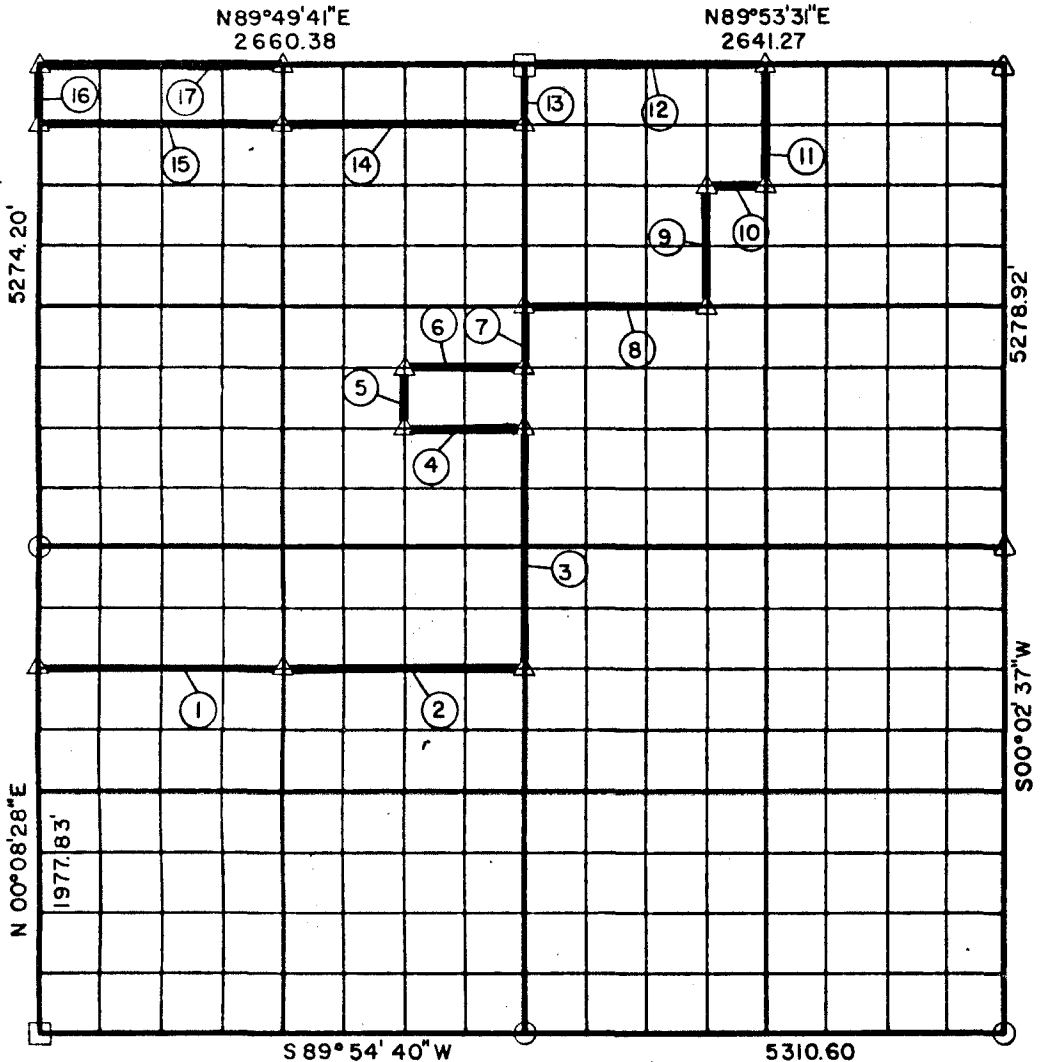


PARTIAL BOUNDARY SURVEYS
AREA "B"
WISTER RESERVOIR
POTEAU RIVER, OKLAHOMA

Performed Under Contract Number DACW 56-71-C-0115

SECTION 32, T-5-N R-26-E LE FLORE COUNTY



Course No.	Distance	Bearing	Course No.	Distance	Bearing
(1)	1328.60'	N 89°53'31\"E	(5)	1330.03'	S 89°50'07\"W
(2)	1328.60'	N 89°53'31\"E	(6)	329.64'	N 00°08'28\"E
(3)	1319.52'	N 00°11'46\"E	(7)	1330.19'	N 89°49'41\"E
(4)	664.62'	S 89°52'16\"W			
(5)	329.89'	N 00°10'56\"E			
(6)	664.70'	N 89°51'50\"E			
(7)	329.97'	N 00°11'46\"E			
(8)	991.79'	N 89°53'19\"E			
(9)	659.92'	N 00°08'20\"E			
(10)	330.38'	N 89°53'25\"E			
(11)	659.91'	N 00°07'11\"E			
(12)	1320.63'	S 89°53'31\"W			
(13)	329.97'	S 00°11'46\"W			
(14)	1330.03'	S 89°50'07\"W			

Book No. 1-168

Date: JUNE 1971

- △ Monument
- Original Corner
- Iron Pin

I, George L. Munde, a Registered Land Surveyor, do hereby certify that the above plot is a true and accurate survey of Section 32, T-5-N, R-26-E as made under my supervision.

George L. Munde
GEORGE L. MUNDE

Reg. Land Surveyor L.S. 587