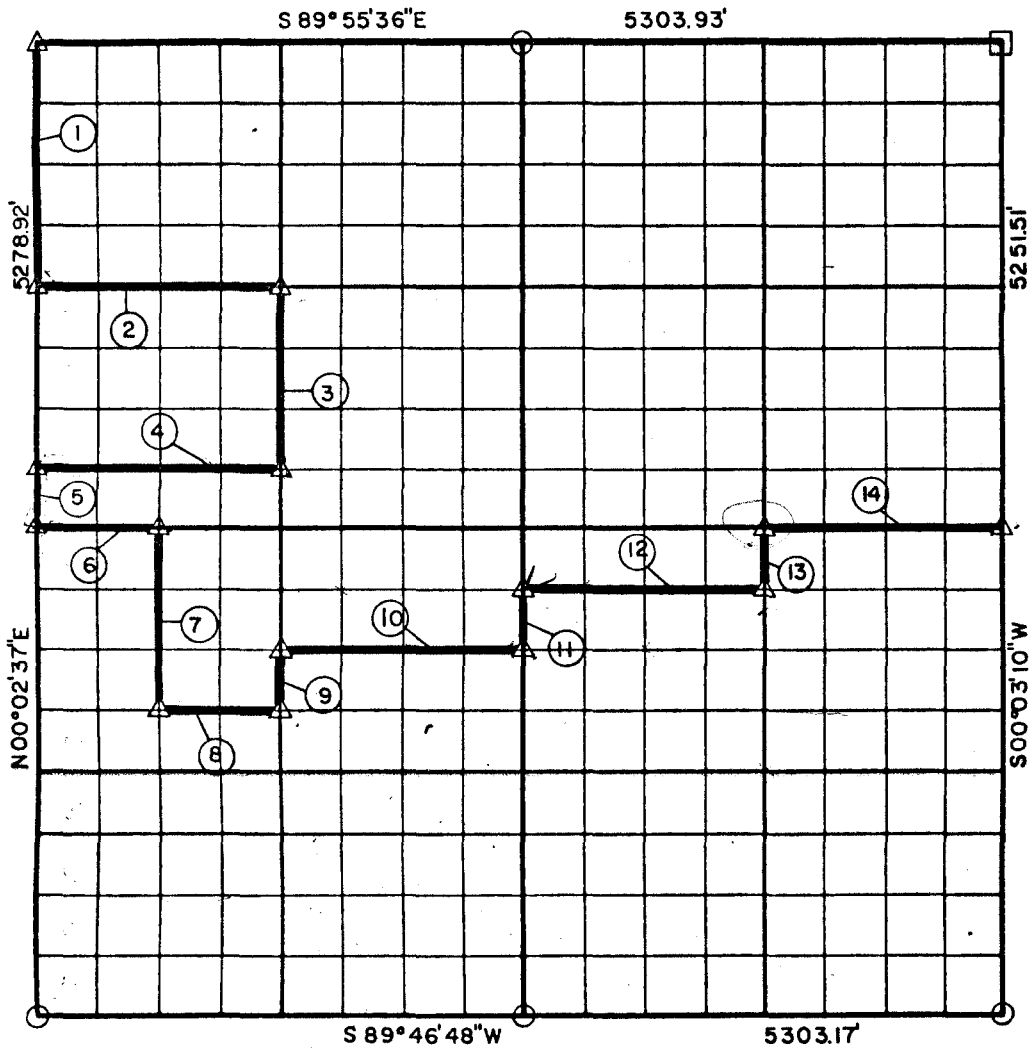


PARTIAL BOUNDARY SURVEYS  
 AREA "B"  
 WISTER RESERVOIR  
 POTEAU RIVER, OKLAHOMA

Performed Under Contract Number DACW 56-71-C-0115

SECTION 33, T-5-N R-26-E LE FLORE COUNTY



Course No.	Distance	Bearing	Course No.	Distance	Bearing
①	1319.73'	S 00° 02' 37" W			
②	1325.93'	N 89° 59' 57" E			
③	988.51'	S 00° 02' 42" W			
④	1325.89'	S 89° 56' 38" W			
⑤	329.93'	S 00° 02' 37" W			
⑥	662.94'	N 89° 55' 31" E		12,569.85	~ 2.38 mi
⑦	989.15'	S 00° 02' 41" W			
⑧	662.92'	N 89° 52' 15" E			
⑨	329.50'	N 00° 02' 45" E			
⑩	1325.85'	N 89° 53' 20" E			
⑪	329.08'	N 00° 02' 53" E			
⑫	1325.88'	N 89° 54' 26" E			
⑬	328.65'	N 00° 03' 02" E			
⑭	1325.89'	N 89° 55' 31" E			

Book No. 1-169

Date: JUNE 1971

- △ Monument
- Original Corner
- Iron Pin

I, George L. Munde, a Registered Land Surveyor, do hereby certify that the above plot is a true and accurate survey of Section 33, T-5-N, R-26-E as made under my supervision.

*George L. Munde*  
 GEORGE L. MUNDE  
 Reg. Land Surveyor L.S. 587