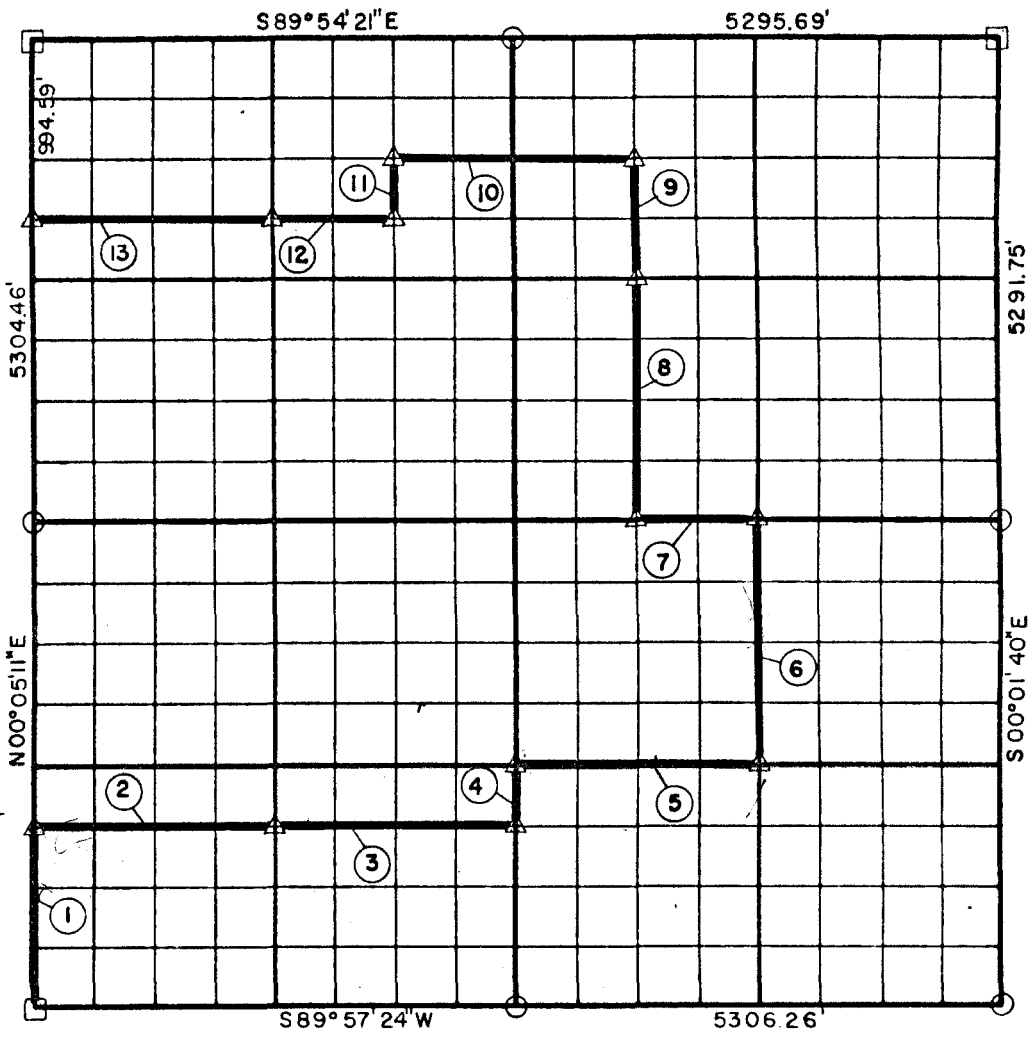


PARTIAL BOUNDARY SURVEYS
 AREA "B"
 WISTER RESERVOIR
 POTEAU RIVER, OKLAHOMA

Performed Under Contract Number DACW 56-71 -C-0115

SECTION 35, T-5-N R-26-E LE FLORE COUNTY



Course No.	Distance	Bearing	Course No.	Distance	Bearing
1	994.59'	N 00° 05' 11" E			
2	1326.07'	N 89° 58' 57" E			
3	1326.07'	N 89° 58' 57" E			
4	331.13'	N 00° 01' 46" E			
5	1325.90'	N 89° 59' 27" E			
6	1323.73'	N 00° 00' 03" E			
7	662.62'	N 89° 58' 29" W			
8	1324.13'	N 00° 00' 54" E			
9	662.07'	N 00° 00' 54" E			
10	1324.25'	N 89° 55' 23" W			
11	331.23'	S 00° 02' 37" W			
12	662.20'	N 89° 55' 54" W			
13	1324.42'	N 89° 55' 54" W			

Book No. 1-171

Date: JUNE 1971

- △ Monument
- Original Corner
- Iron Pin

I, George L. Munde, a Registered Land Surveyor, do hereby certify that the above plat is a true and accurate survey of Section 35, T-5-N, R-26-E as made under my supervision.

George L. Munde
 GEORGE L. MUNDE
 Reg. Land Surveyor L.S. 587