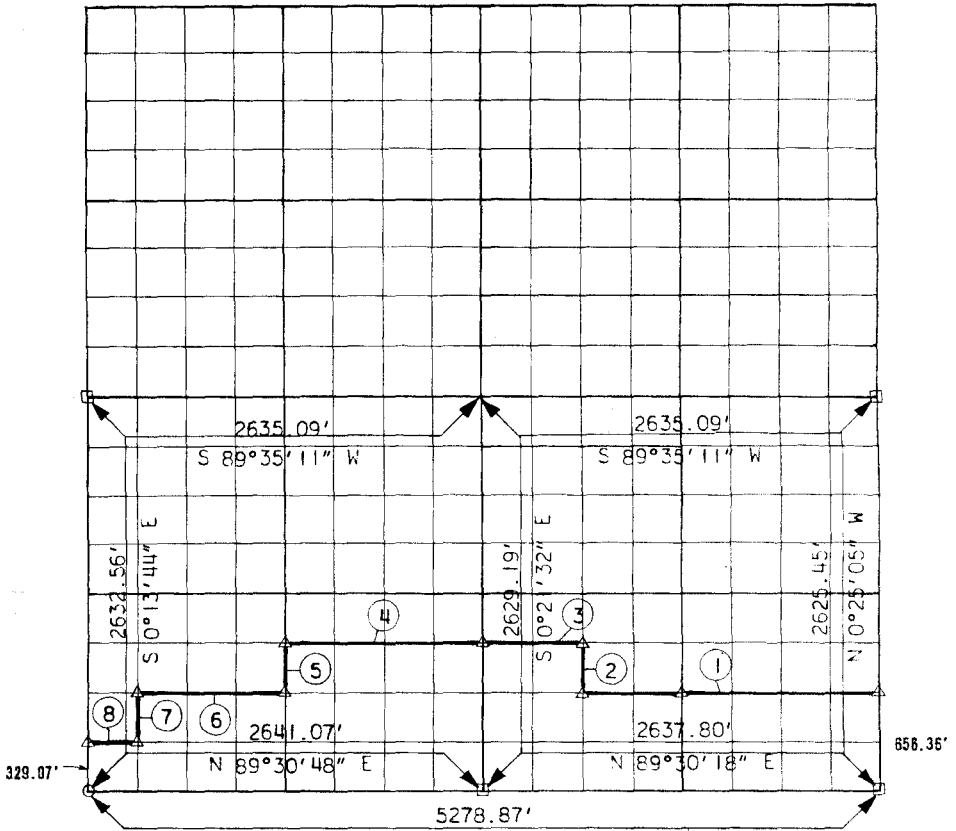


PARTIAL BOUNDARY SURVEYS
 WISTER RESERVOIR
 POTEAU RIVER, OKLAHOMA

Performed Under Contract Number DACW56-70-C-0086

SEC 33 T 6 N R 23 E COUNTY LEFLORE



Course No.	Distance	Bearing	Course No.	Distance	Bearing
1	1978.20'	S 89°31'31" W			
2	328.53'	N 0°22'25" W			
3	659.20'	S 89°32'08" W			
4	1319.41'	S 89°32'27" W			
5	328.86'	S 0°17'38" E			
6	989.84'	S 89°31'54" W			
7	329.02'	S 0°14'42" E			
8	330.04'	S 89°31'21" W			

CERTIFICATE OF SURVEY Field Book No. 1-160 Date 7-18-70
 I HEREBY CERTIFY THAT THE ABOVE PLAT IS A TRUE AND CORRECT REPRESENTATION OF THE SURVEY MADE IN SECTION 33, T 6 N, R 23 E, LEFLORE COUNTY, OKLAHOMA.

SULLIVAN & GILBERT, INC.

Under the Supervision of

U.S. ARMY ENGINEER DISTRICT, TULSA
 CORPS OF ENGINEERS

LEGEND

- △ MONUMENT
- ORIGINAL CORNER
- IRON PIN

Sullivan & Gilbert
 REGISTERED PROFESSIONAL ENGINEER