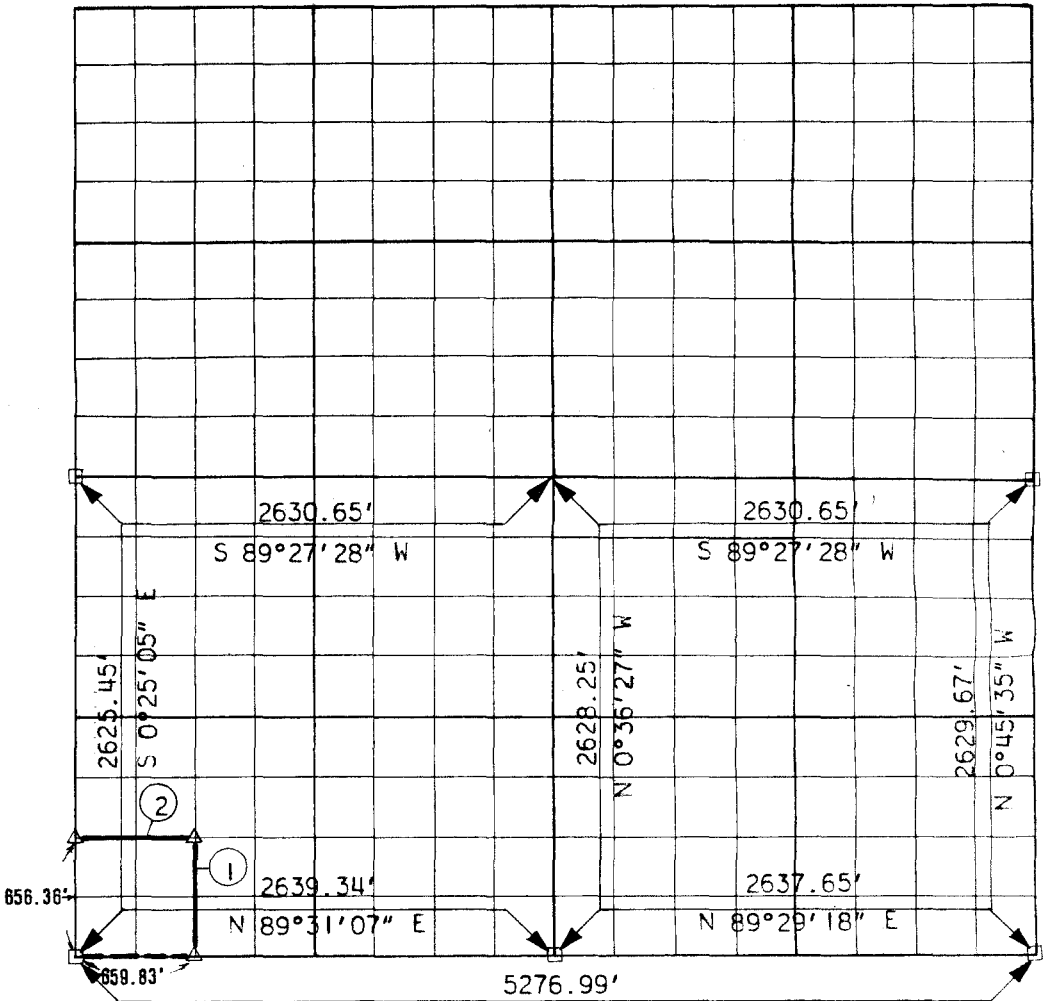


**PARTIAL BOUNDARY SURVEYS
WISTER RESERVOIR
POTEAU RIVER, OKLAHOMA**

Performed Under Contract Number DACW56-70-C-0086

SEC 34 T 6 N R 23 E COUNTY LEFLORE



Course No.	Distance	Bearing	Course No.	Distance	Bearing
1	656.54'	N 0°27'56" W			
2	659.29'	S 89°30'13" W			

CERTIFICATE OF SURVEY Field Book No. 1-161 Date 7-18-70

I HEREBY CERTIFY THAT THE ABOVE PLAT IS A TRUE AND CORRECT REPRESENTATION OF THE SURVEY MADE IN SECTION 34, T 6 N, R 23 E LEFLORE COUNTY, OKLAHOMA.

SULLIVAN & GILBERT, INC.

Under the Supervision of

**U.S. ARMY ENGINEER DISTRICT, TULSA
CORPS OF ENGINEERS**

LEGEND
 Δ MONUMENT
 □ ORIGINAL CORNER
 ○ IRON PIN

Sullivan & Gilbert
 REGISTERED PROFESSIONAL ENGINEER