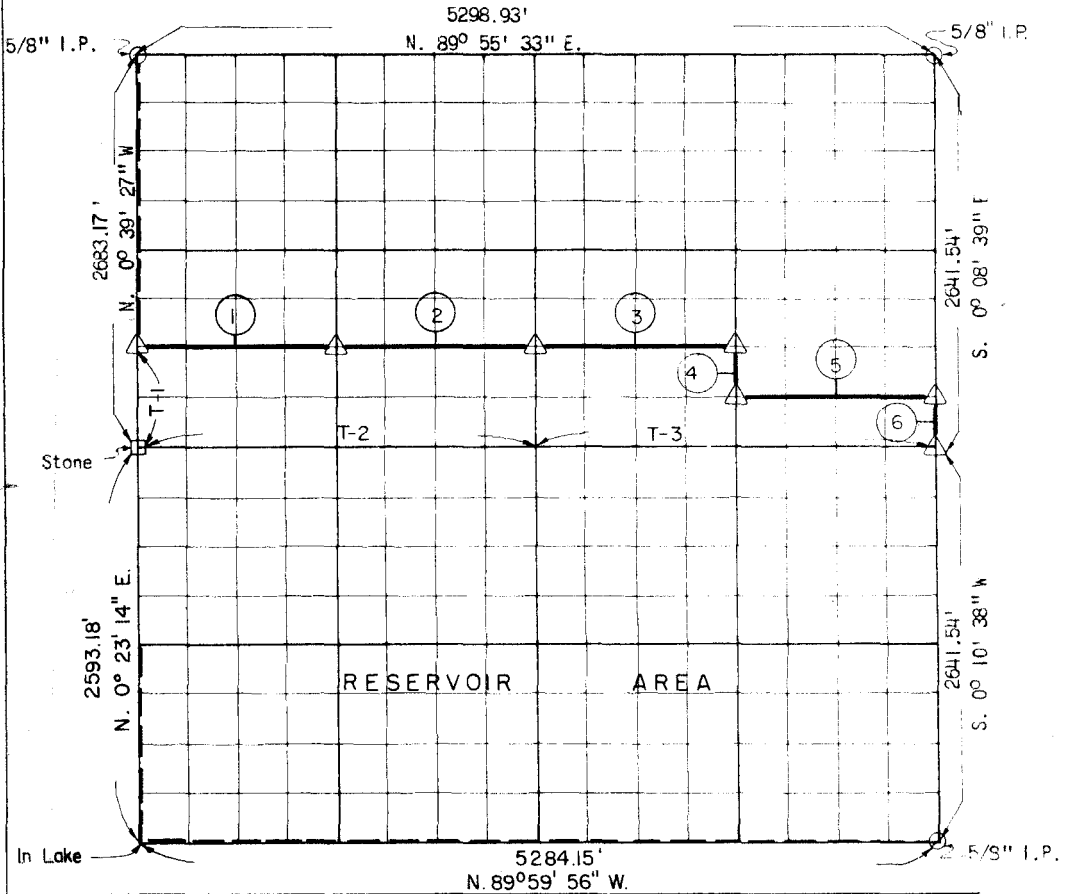


PARTIAL BOUNDARY SURVEYS
WISTER RESERVOIR
POTEAU RIVER, OKLAHOMA

Performed Under Contract Number DACW 56-70-C

SEC 36 T-6-N R-24-E COUNTY LE FLORE



Course No.	Distance	Bearing	Course No.	Distance	Bearing
①	1314.33'	N. 89° 35' 19" E.			
②	1314.33'	N. 89° 35' 19" E.			
③	1326.15'	N. 89° 35' 16" E.			
④	331.49'	S. 0° 06' 14" E.			
⑤	1326.39'	N. 89° 31' 53" E.			
⑥	330.19'	S. 0° 08' 39" E.			
T-1	670.79'	N. 0° 39' 27" W.			
T-2	2621.74'	S. 89° 28' 31" W.			
T-3	2653.26'	S. 89° 28' 31" W.			

CERTIFICATE OF SURVEY Field Book No. 1-157 Date 17 JULY, 1970

I HEREBY CERTIFY THAT THE ABOVE PLAT IS A TRUE AND CORRECT REPRESENTATION OF THE SURVEY MADE IN SECTION 36, T-6-N, R-24-E, LE FLORE COUNTY OKLAHOMA.

W. W. Wheeler
REGISTERED LAND SURVEYOR

WHEELER & ASSOCIATES
ENGINEERS
Under the Supervision of
U.S. ARMY ENGINEER DISTRICT, TULSA
CORPS OF ENGINEERS
SHEET 5 of 6

LEGEND:
▲ MONUMENT
□ ORIGINAL CORNER
○ IRON PIN
■ HWY R/W MARKER