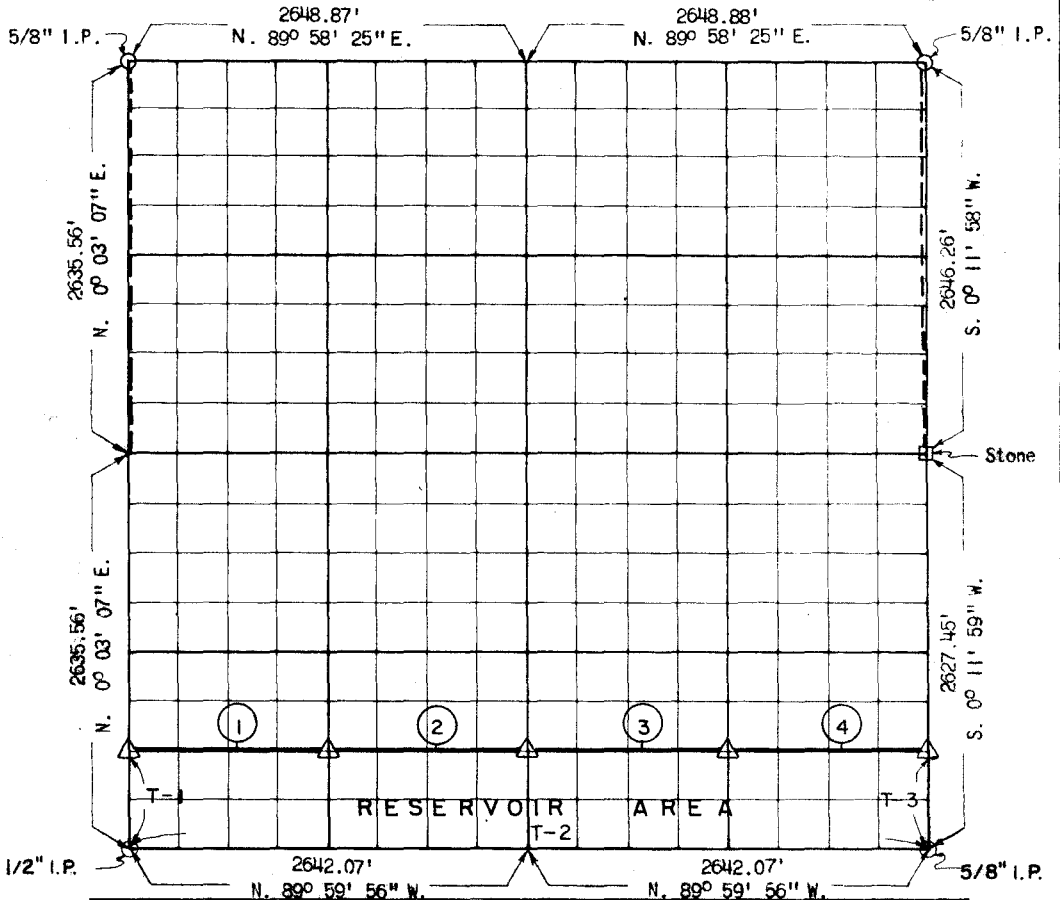




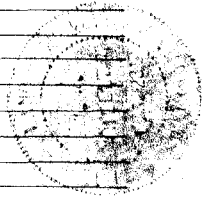
**PARTIAL BOUNDARY SURVEYS  
WISTER RESERVOIR  
POTEAU RIVER, OKLAHOMA**

Performed Under Contract Number DACW 56-70-C

**SEC 34 T-6-N R-24-E COUNTY LE FLORE**



Course No.	Distance	Bearing	Course No.	Distance	Bearing
①	1321.46'	S. 89° 58' 37" E.			
②	1321.46'	S. 89° 58' 37" E.			
③	1321.46'	S. 89° 58' 37" E.			
④	1321.46'	S. 89° 58' 37" E.			
T-1	658.89'	N. 0° 03' 07" E.			
T-2	5281.14'	N. 89° 59' 56" W.			
T-3	656.86'	S. 0° 11' 59" W.			



CERTIFICATE OF SURVEY Field Book No. 1-155 Date 17 JULY, 1970.

**WHEELER & ASSOCIATES  
ENGINEERS**

Under the Supervision of

**U.S. ARMY ENGINEER DISTRICT, TULSA  
CORPS OF ENGINEERS**

SHEET 3 of 6

I HEREBY CERTIFY THAT THE ABOVE PLAT IS A TRUE AND CORRECT REPRESENTATION OF THE SURVEY MADE IN SECTION 34, T-6-N, R-24-E, LE FLORE COUNTY OKLAHOMA.

*W. W. Wheeler*  
REGISTERED LAND SURVEYOR

- LEGEND
- Δ MONUMENT
  - ORIGINAL CORNER
  - IRON PIN
  - HWY R/W MARKER