




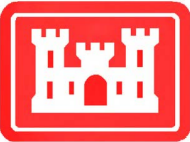


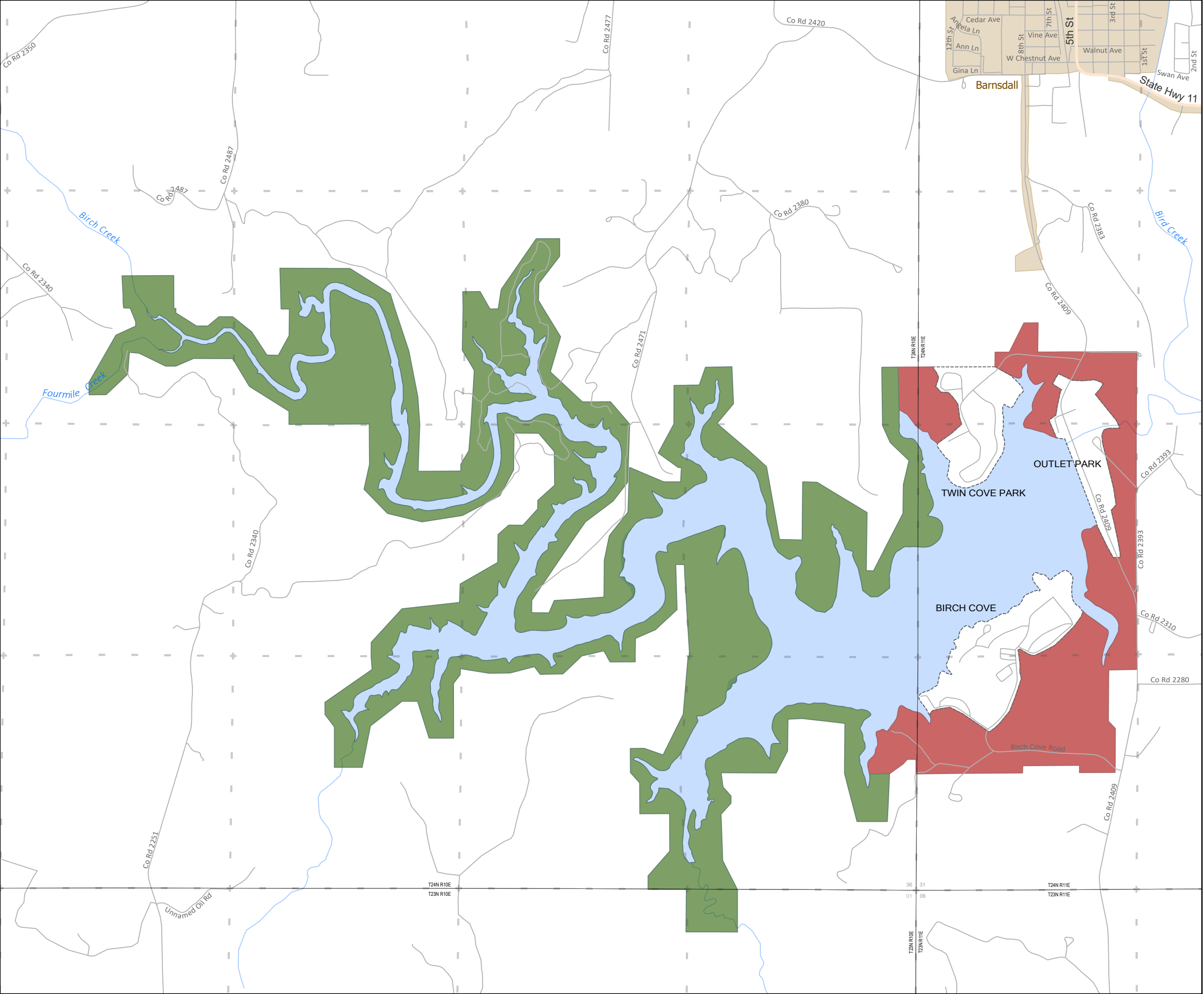
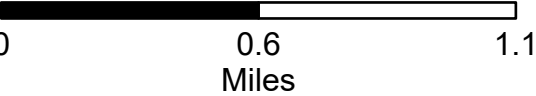
Birch Lake Hunting Areas

-  U.S. Army Corps of Engineers - Open for Hunting, All Legal Weapons
-  U.S. Army Corps of Engineers - Restricted, Archery Only
-  NO HUNTING
-  State Highways
-  Local Roads

Conservation Pool Elevation (feet): 751
Shoreline at Conservation Pool (miles): 14
Total Project Land & Water (acres): 3,337



**US Army Corps
of Engineers®**
Tulsa District



HUNTING GUIDE

BIRCH LAKE

Hunting at Birch Lake is in accordance with applicable federal and state fish and wildlife regulations. Generally, all Corps lands are open to the public for hunting except developed recreational areas and lands around the dam and other structures.

Hunters wishing to obtain current hunting regulations or construct duck blinds on Corps lands should reference the current Oklahoma Hunting Guide or contact the Oklahoma Department of Wildlife Conservation, 1801 N. Lincoln Blvd, Oklahoma City, OK 73105 (405) 521-2739.

Hunters are urged to exercise the basic rules of good sportsmanship, safety, and common sense.

Vehicles may be driven only on established roads and camping is restricted to designated sites.

Additional information and copies of regulations governing use of Birch Lake as outlined in Title 36 Code for Federal Regulations may be obtained at the Skiatook Lake Office, (918) 396-3170.

Visit the Tulsa District internet at www.swt.usace.army.mil



RESTRICTED HUNTING

As the result of cooperative arrangements between the Oklahoma Wildlife Conservation Commission and the Tulsa District Corps of Engineers, several tracts of Corps lands have been made available to sportsmen for restricted hunting. With the exception of the special restrictions outlined below, all provisions of the Oklahoma Hunting Regulations for Corps of Engineers lands are applicable on these areas.

As found in the Oklahoma Administrative Code Title 800:25-3-3 (1), the following areas are open for hunting of all species which may legally be taken during legal open seasons by archery equipment only.

- 1) A 450-acre unit in the Birch Cove, Outlet Park and Twin Cove areas.



HELP PROTECT OUR PUBLIC LANDS

AND

HUNT SAFELY

