


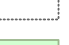





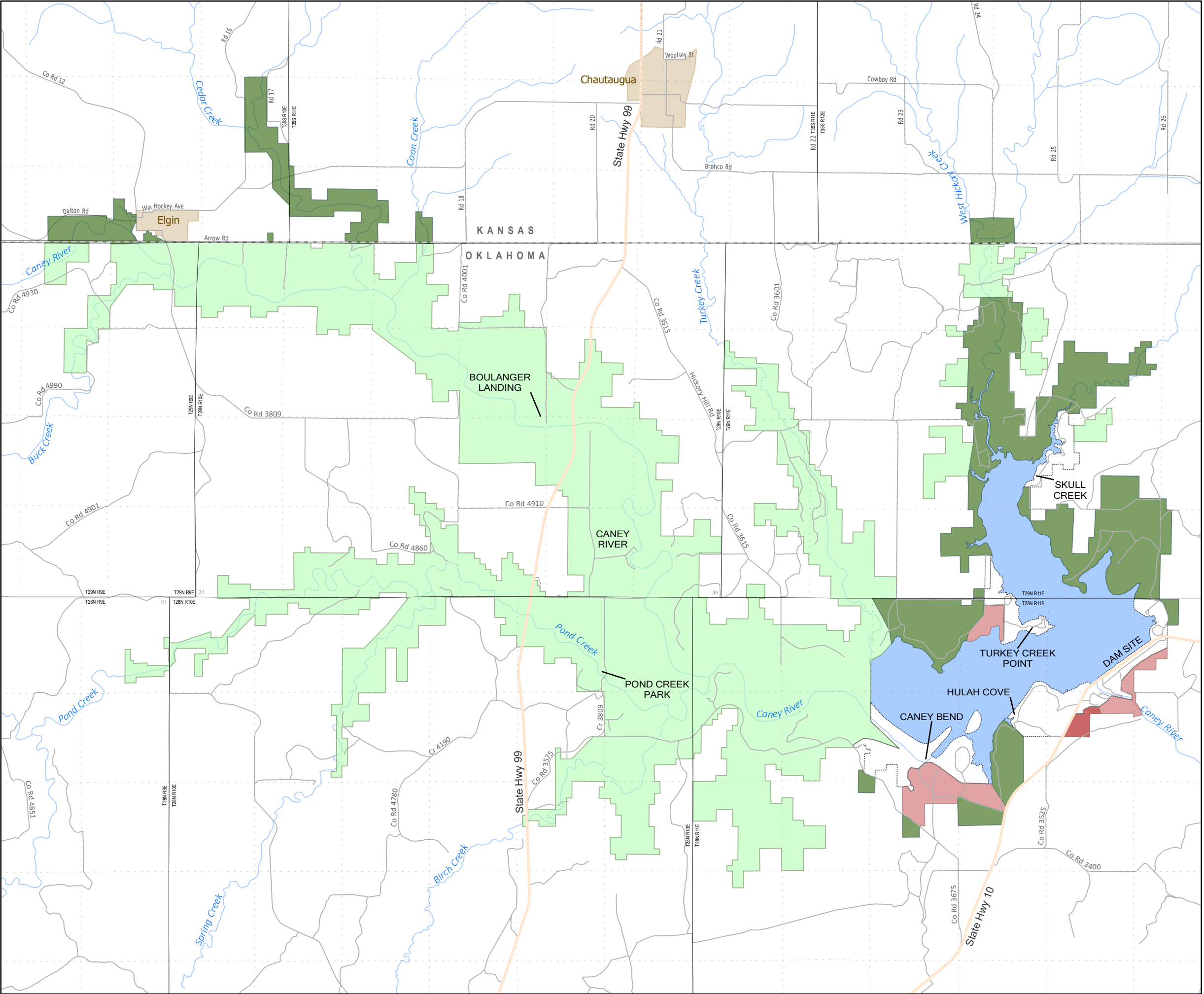
# Hulah Lake Hunting Areas

-  U.S. Army Corps of Engineers - Open for Hunting, All Legal Weapons
-  U.S. Army Corps of Engineers - Restricted, Archery Only
-  U.S. Army Corps of Engineers - Restricted, Archery & Shotgun (Pellets Only)
-  NO HUNTING
-  State Managed, See Special Restrictions
-  State Highways
-  Local Roads

Conservation Pool Elevation (feet): 733  
Shoreline at Conservation Pool (miles): 62  
Total Project Land & Water (acres): 21,510



**US Army Corps  
of Engineers®**  
Tulsa District



# HUNTING GUIDE

## HULAH LAKE

Hunting at Hulah Lake is in accordance with applicable federal and state fish and wildlife regulations. Unless otherwise posted, hunting is permitted in designated hunting areas with all state approved weapons. Generally, all Corps lands are open to the public for hunting except developed recreational areas and lands around the dam and other structures.

Hunters using the Hulah Lake are urged to exercise the basic rules of good sportsmanship, safety, and common sense.

Vehicles may be driven only on authorized and maintained roads. Camping is restricted to designated sites.

Hunters wishing to obtain current hunting regulations or construct duck blinds on Corps land should reference the current Hunting Guides of Oklahoma or Kansas or contact the Oklahoma Department of Wildlife Conservation, 1801 N. Lincoln Blvd, Oklahoma City, OK 74105 (405) 521-2739; Kansas Department of Wildlife & Parks, 512 SE 25<sup>th</sup> Ave, Pratt, Kansas 67124 (620) 672-5911; and the Copan/Hulah Corps of Engineers Lake Office, 396120 State Hwy 10, Copan, OK 74022 (918) 532-4334.

Additional information and copies of regulations governing use of the Hulah Lake as outlined in Title 36 of the Code of Federal Regulations may be obtained at the Copan/Hulah Lake Office.

Visit the Tulsa District internet at [www.swt.usace.army.mil](http://www.swt.usace.army.mil)



**HELP PROTECT OUR PUBLIC LANDS**

## - RESTRICTED HUNTING -

As the result of cooperative arrangements between the Oklahoma Wildlife Conservation Commission and the Tulsa District Corps of Engineers, several tracts of Corps Project lands have been made available to Oklahoma sportsmen for restricted hunting. With the exception of the special restrictions outlined below, all provisions of the Oklahoma Hunting Regulations for Corps of Engineers lands are applicable on these areas.

As found in the Oklahoma Administrative Code 800:25-3-2 (13), the following areas are open for hunting of all species which may legally be taken during legal open seasons by archery equipment and shotgun with pellets only.

- (A) A 200-acre unit in the Turkey Creek Point Area.
- (B) A 60-acre unit below Hulah Dam.
- (C) A 375-acre unit in the Caney Bend Area.

As found in the Oklahoma Administrative Code 800:25-3-3 (7), the following area is open for hunting of all species which may legally be taken during legal open seasons by archery equipment only.

- (A) A 40-acre unit south of the Hulah State Park Office.



**HUNT SAFELY**