

Sardis Lake Hunting Areas

* Corps posted restrictions - Deer hunting is by archery equipment only

- U.S. Army Corps of Engineers - Open for Hunting, All Legal Weapons
- U.S. Army Corps of Engineers - Restricted, Archery & Shotgun (Pellets Only)
- NO HUNTING
- US Highways
- State Highways
- Local Roads
- USACE Lake Office

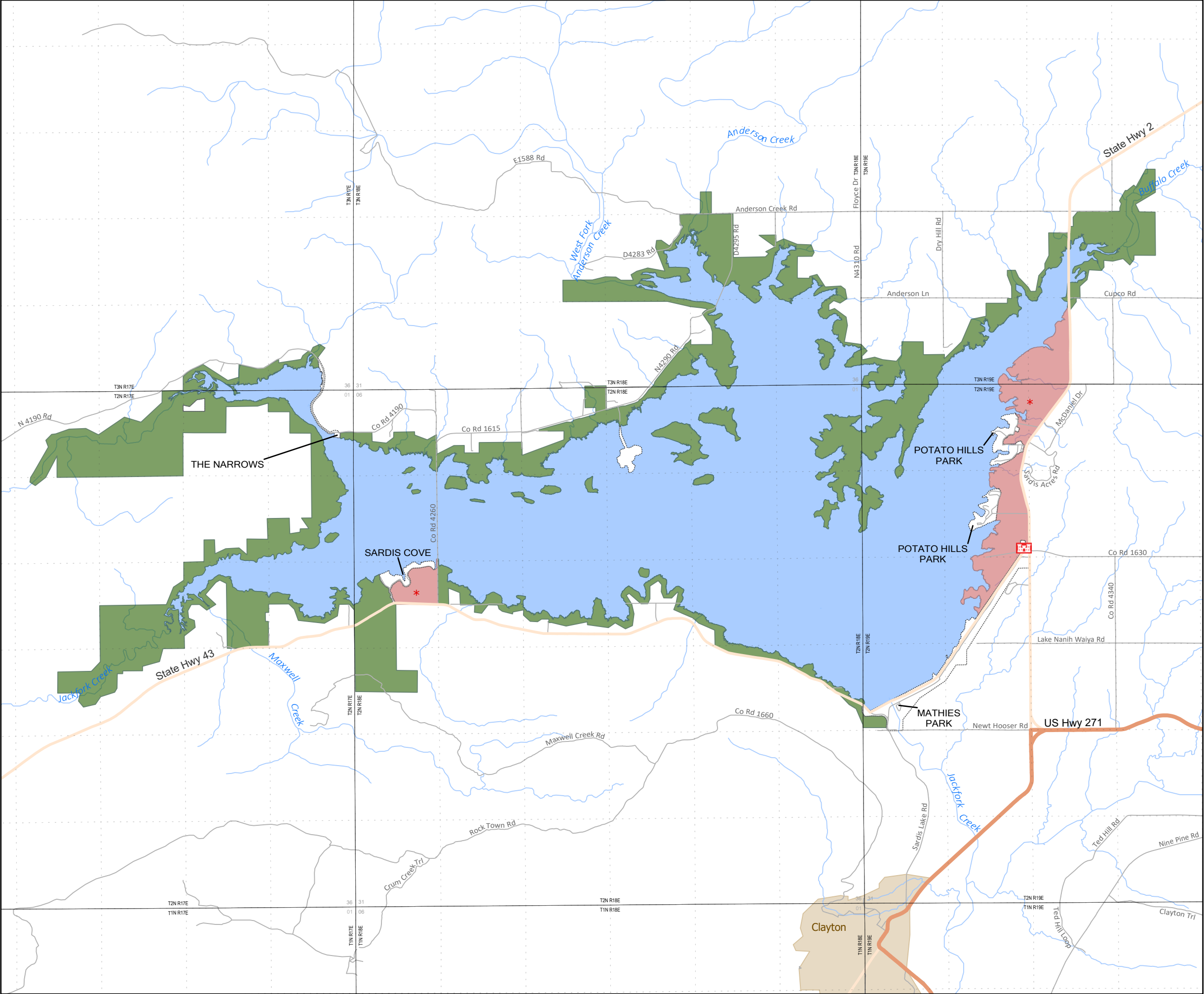
Conservation Pool Elevation (feet): 599
Shoreline at Conservation Pool (miles): 117
Total Project Land & Water (acres): 25,000



US Army Corps
of Engineers®
Tulsa District



0 1 2
Miles



HUNTING GUIDE

SARDIS LAKE

Hunting at Sardis Lake is in accordance with applicable federal and state fish and wildlife regulations. Generally, all Corps lands are open to the public for hunting except developed recreational areas and lands around the dam and other structures.

Hunters wishing to obtain current hunting regulations or construct duck blinds on Corps lands should reference the current Oklahoma Hunting Guide or contact the Oklahoma Department of Wildlife Conservation, 1801 N. Lincoln Blvd, Oklahoma City, OK 73105 (405) 521-2739.

Hunters are urged to exercise the basic rules of good sportsmanship, safety, and common sense.

Vehicles may be driven only on established roads and camping is restricted to designated sites.

Additional information and copies of regulations governing use of Sardis Lake as outlined in Title 36 Code for Federal Regulations may be obtained at the Sardis Lake Office, (918) 569-4131.

Visit the Tulsa District internet at www.swt.usace.army.mil



RESTRICTED HUNTING

As the result of cooperative arrangements between the Oklahoma Wildlife Conservation Commission and the Tulsa District Corps of Engineers, several tracts of Corps lands have been made available to sportsmen for restricted hunting. With the exception of the special restrictions outlined below, all provisions of the Oklahoma Hunting Regulations for Corps of Engineers lands are applicable on these areas.

As found in the Oklahoma Administrative Code Title 800:25-3-2 (7), the following areas are open for hunting of all species which may legally be taken during legal open seasons by archery equipment and shotgun with pellets only.

(A) A 950-acre unit in the Potato Hills Area. Corps posted restrictions – Bucks must have a 15” inch minimum outside antler spread. No turkey hunting.

(B) A 100-acre unit in the Sardis Cove Area.

Corps posted restriction for both areas – Deer hunting is by archery equipment only.

