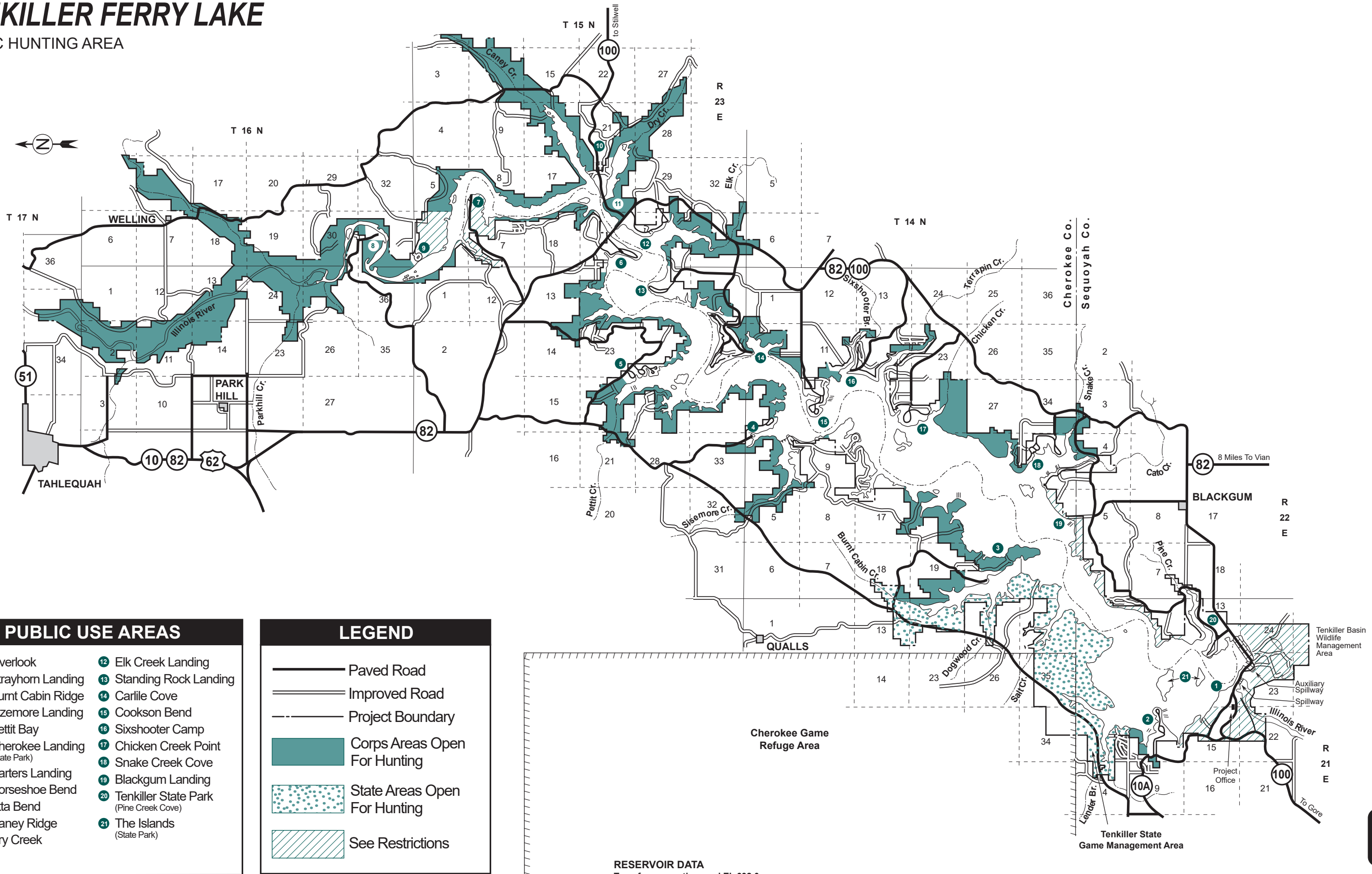


TENKILLER FERRY LAKE

PUBLIC HUNTING AREA



PUBLIC USE AREAS

- | | |
|---------------------------------|---|
| 1 Overlook | 12 Elk Creek Landing |
| 2 Strayhorn Landing | 13 Standing Rock Landing |
| 3 Burnt Cabin Ridge | 14 Carlile Cove |
| 4 Sizemore Landing | 15 Cookson Bend |
| 5 Pettit Bay | 16 Sixshooter Camp |
| 6 Cherokee Landing (State Park) | 17 Chicken Creek Point |
| 7 Carters Landing | 18 Snake Creek Cove |
| 8 Horseshoe Bend | 19 Blackgum Landing |
| 9 Etta Bend | 20 Tenkiller State Park (Pine Creek Cove) |
| 10 Caney Ridge | 21 The Islands (State Park) |
| 11 Dry Creek | |

LEGEND

- Paved Road
- Improved Road
- Project Boundary
- Corps Areas Open For Hunting
- State Areas Open For Hunting
- See Restrictions



RESERVOIR DATA
 Top of conservation pool El. 632.0
 130 shoreline miles at El. 632.0
 Total project land & water acreage 30634



US Army Corps of Engineers
 Tulsa District

HUNTING GUIDE

TENKILLER FERRY LAKE

Hunting at Tenkiller Ferry Lake is in accordance with applicable federal and state fish and wildlife regulations. Generally, all Corps lands are open to the public for hunting except developed recreational areas and lands around the dam and other structures. Hunting on the Cherokee Game Refuge is permitted only during special seasons as set by the Oklahoma Department of Wildlife Conservation.

Hunters wishing to obtain current hunting regulations or construct duck blinds on Corps lands should reference the current Oklahoma Hunting Guide or contact the Oklahoma Department of Wildlife Conservation, 1801 N. Lincoln Blvd, Oklahoma City, OK 73105 (405) 521-2739.

Hunters are urged to exercise the basic rules of good sportsmanship, safety, and common sense. Vehicles may be driven only on established roads and camping is restricted to designated sites.

Additional information and regulations governing use of Corps land or water as outlined in Title 36 Code of Federal Regulations may be obtained at the Tenkiller Ferry Lake Office, (918) 487-5252, or from the U.S. Army Corps of Engineers, 2488 E 81st Street, Tulsa, OK 74137 (918) 669-7370.

Visit the Tulsa District internet at www.swt.usace.army.mil



HUNT SAFELY

HELP PROTECT OUR PUBLIC LANDS

RESTRICTED HUNTING

As the result of cooperative arrangements between the Oklahoma Wildlife Conservation Commission and the Tulsa District Corps of Engineers, several tracts of Corps Project lands have been made available to Oklahoma sportsmen for restricted hunting. With the exception of the special restrictions outlined below, all provisions of the Oklahoma Hunting Regulations for Corps of Engineers lands are applicable on these areas.

The following area is open for hunting of all species which may legally be taken during legal open seasons by archery equipment and shotgun with pellets only.

1) A 110-acre unit north of the asphalt road and east of Highway 10A.

The following areas are open for hunting of all species which may legally be taken during legal open seasons by archery equipment and all legal firearms other than centerfire rifles and handguns.

1) A 320-acre unit between Tenkiller State Park and Cato Creek Landing public use area.

2) A 300-acre unit southeast of Etta Bend.

3) A 240-acre unit south and southwest of Carters Landing Park.

4) A 1,090-acre unit known as the Tenkiller Basin Wildlife Management Area, located south of the dam embankment, spillways and project office, the area is open for hunting of all species which may legally be taken during the open seasons by archery equipment, shotguns (utilizing federally approved nontoxic shot only), and rimfire firearms, except that the area is closed to all hunting from 1 October through 15 November and deer hunting is by archery equipment only.