

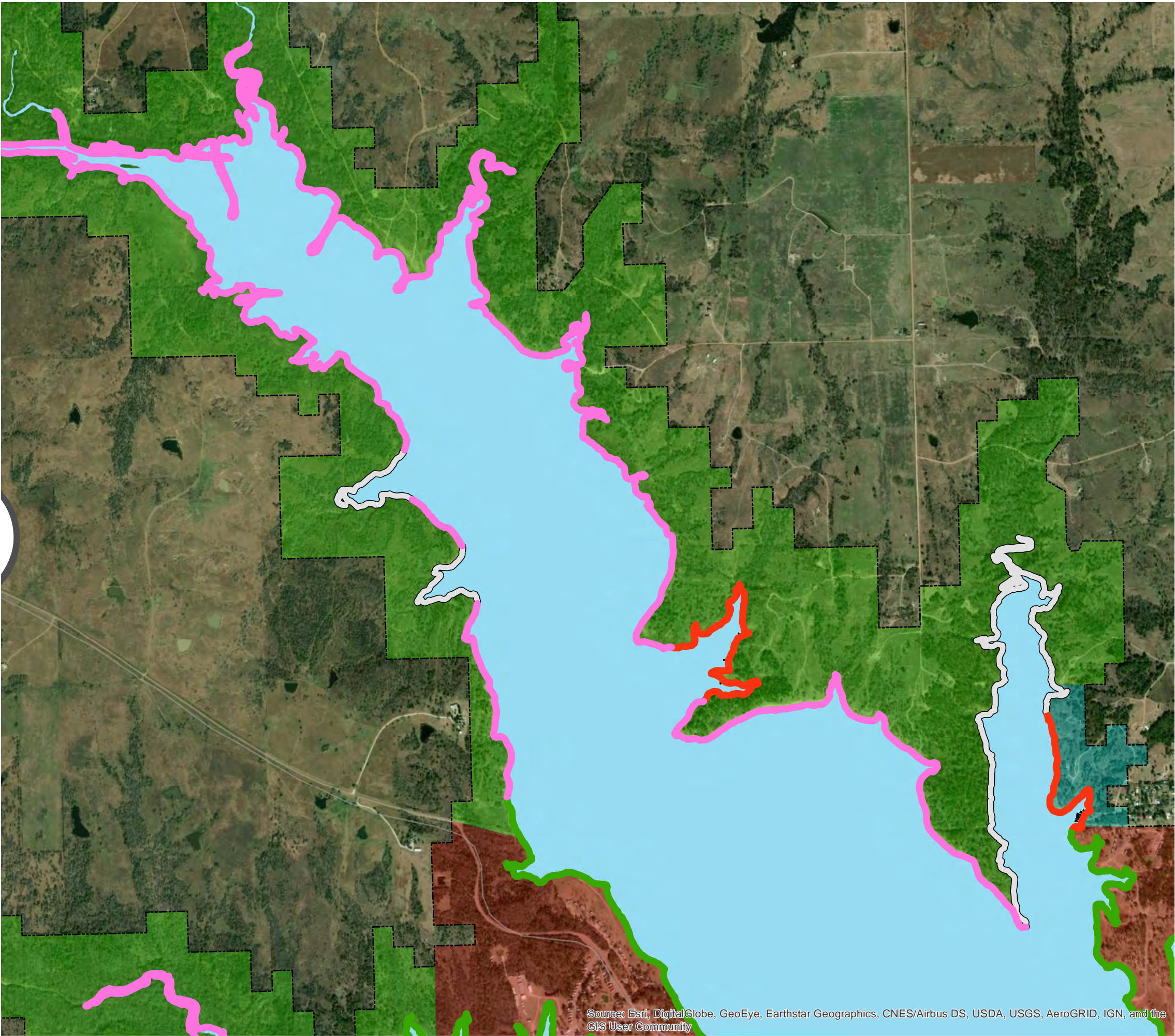
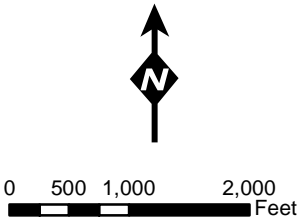
# BRIDGEVIEW AND GLASSES CREEK COVES

## LAKE TEXOMA

SHORELINE ALLOCATIONS  
1996 SHORELINE MANAGEMENT PLAN



US Army Corps  
of Engineers  
Tulsa District



# BUNCOMBE CREEK COVE LAKE TEXOMA

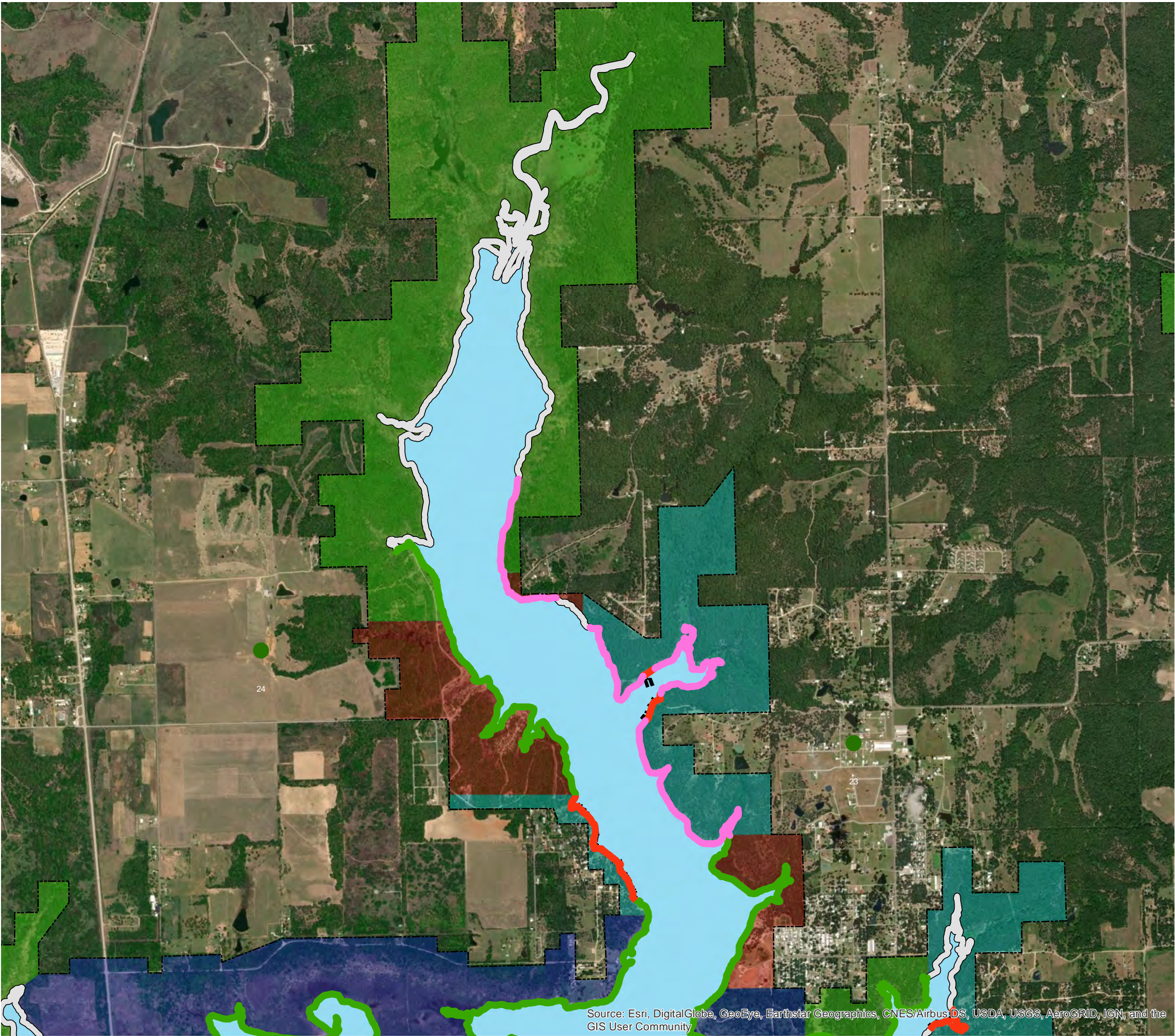
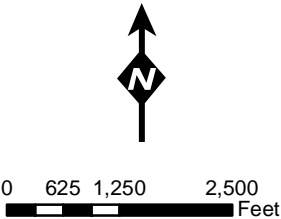
SHORELINE ALLOCATIONS  
1996 SHORELINE MANAGEMENT PLAN



- AESTHETIC AREA
- LIMITED DEVELOPMENT AREA
- PROTECTED AREA
- PUBLIC RECREATION AREA
- PRIVATELY-OWNED BOAT DOCKS
- FEE BOUNDARY
- HIGH DENSITY RECREATION
- ENVIRONMENTALLY SENSITIVE AREAS
- LOW DENSITY RECREATION
- WILDLIFE MANAGEMENT



US Army Corps  
of Engineers  
Tulsa District



Source: Esri, DigitalGlobe, GeoEye, Earthstar Geographics, CNES/Airbus DS, USDA, USGS, AeroGRID, IGN, and the GIS User Community

# CANEY CREEK NORTH, GRAY'S, AND CANEY CREEK COVES LAKE TEXOMA

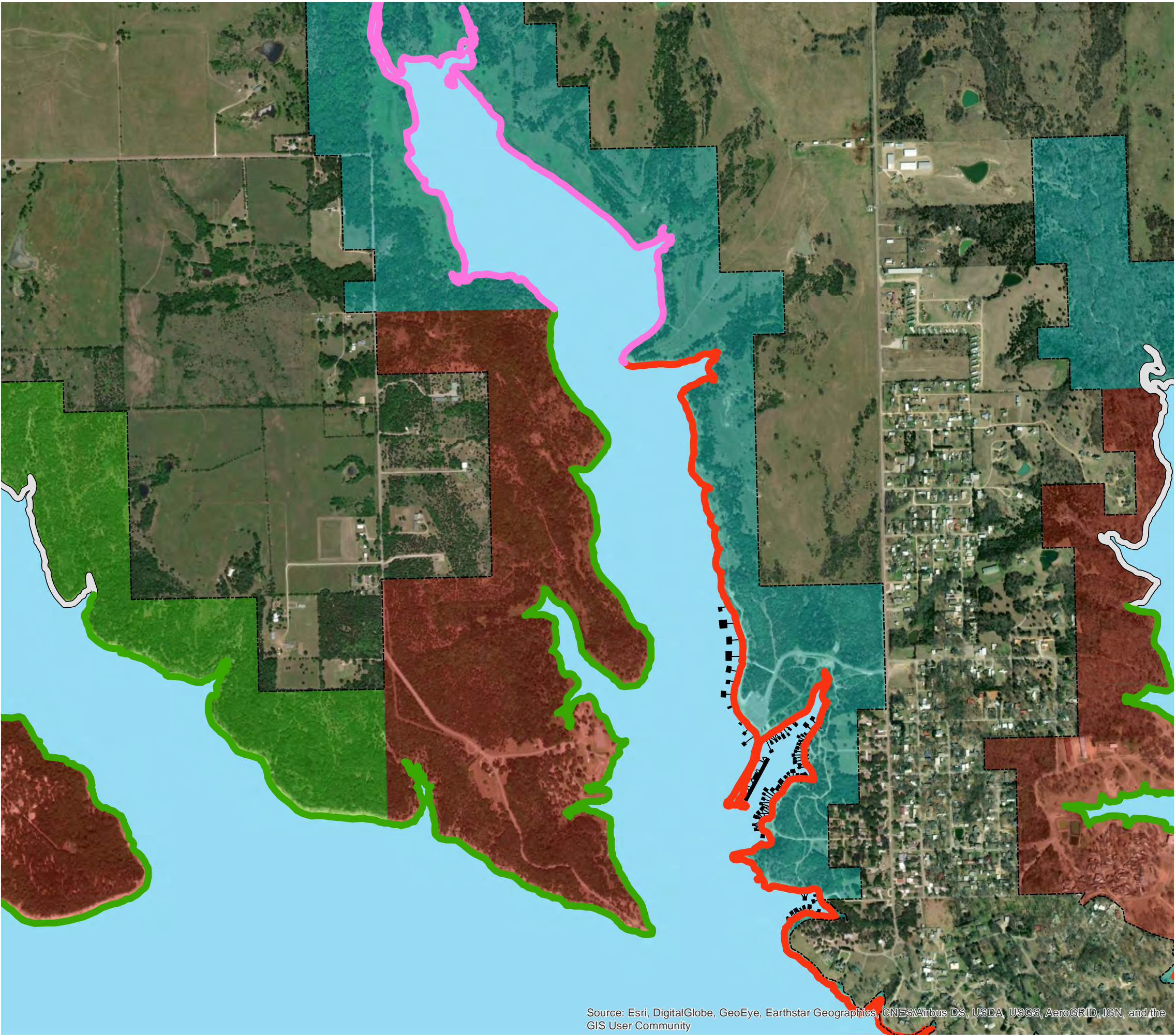
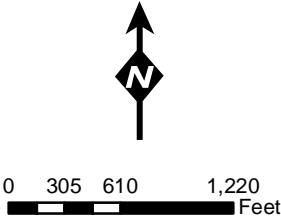
SHORELINE ALLOCATIONS  
1996 SHORELINE MANAGEMENT PLAN



- AESTHETIC AREA
- LIMITED DEVELOPMENT AREA
- PROTECTED AREA
- PUBLIC RECREATION AREA
- PRIVATELY-OWNED BOAT DOCKS
- FEE BOUNDARY
- HIGH DENSITY RECREATION
- LOW DENSITY RECREATION
- WILDLIFE MANAGEMENT



US Army Corps  
of Engineers  
Tulsa District



Source: Esri, DigitalGlobe, GeoEye, Earthstar Geographics, CNES/Airbus DS, USDA, USGS, AeroGRID, IGN, and the GIS User Community

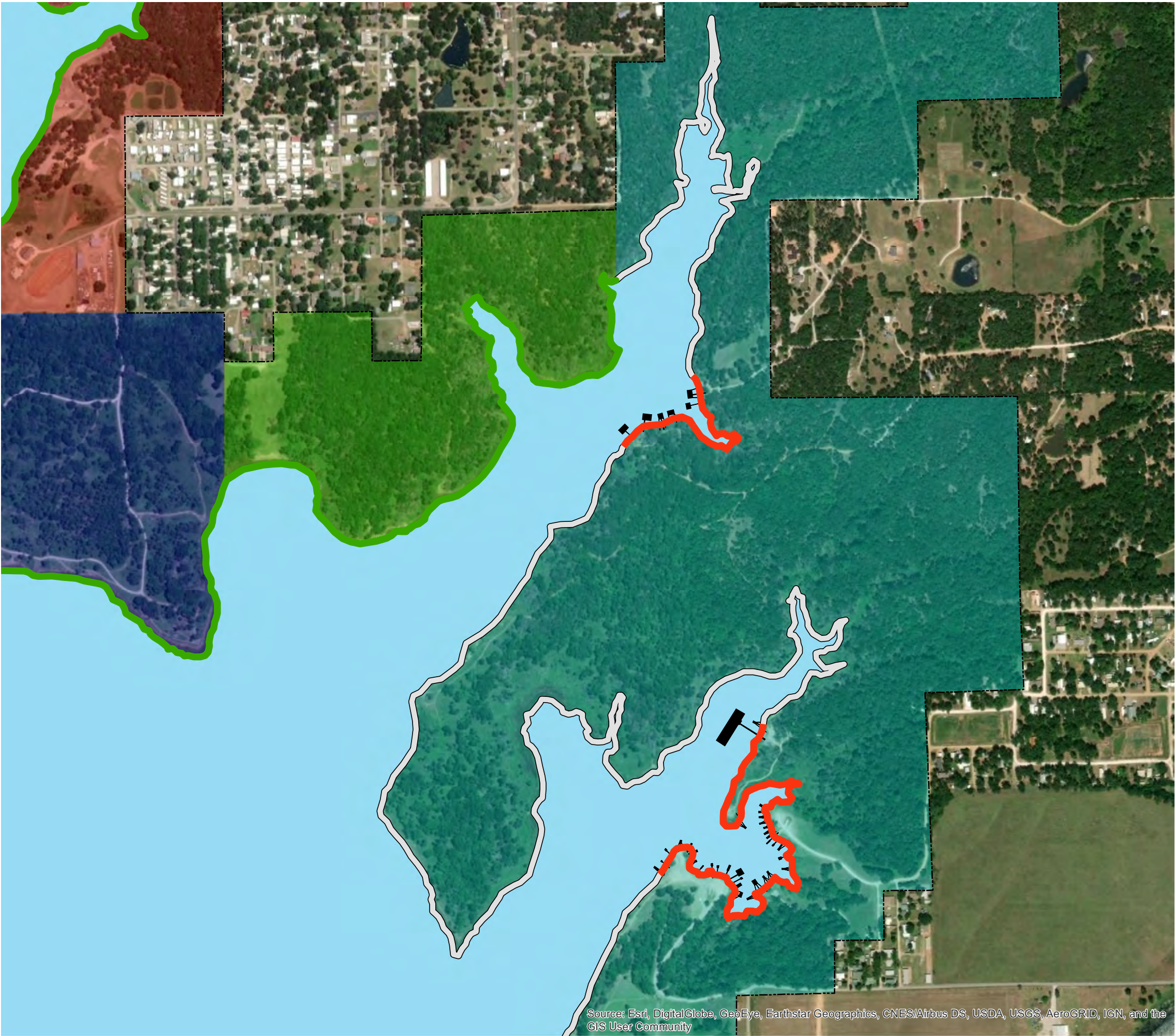
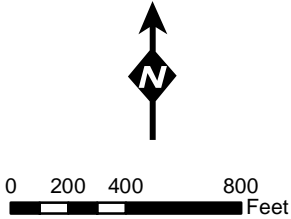
# CARDINAL AND LIMESTONE CREEK COVES

## LAKE TEXOMA

SHORELINE ALLOCATIONS  
1996 SHORELINE MANAGEMENT PLAN

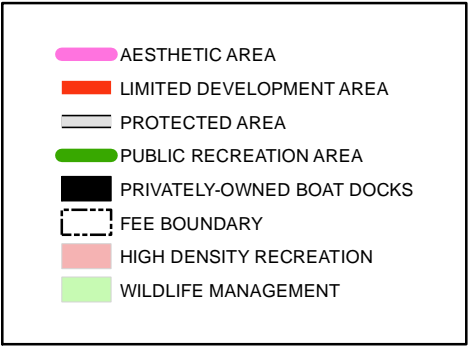


US Army Corps  
of Engineers  
Tulsa District

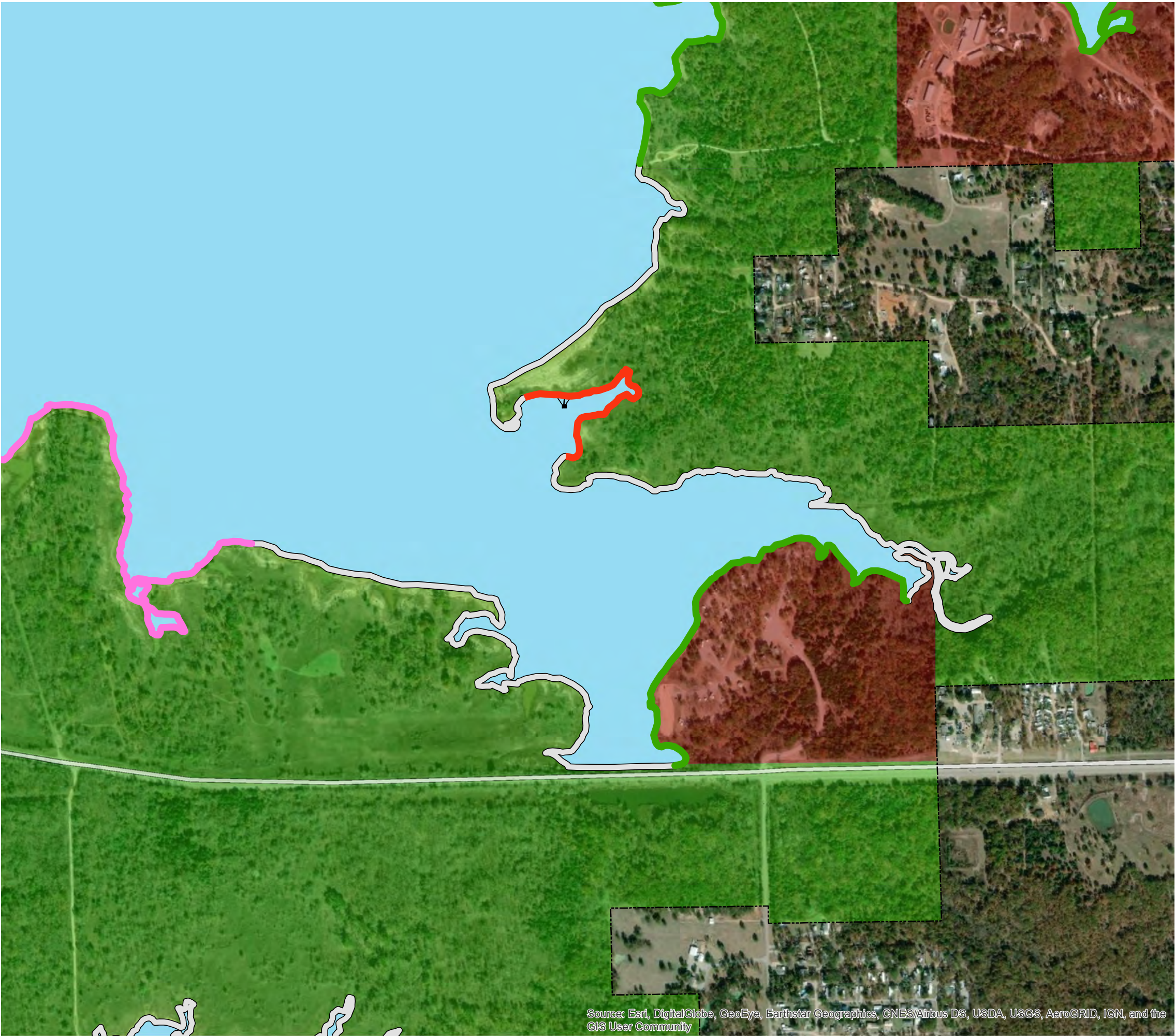
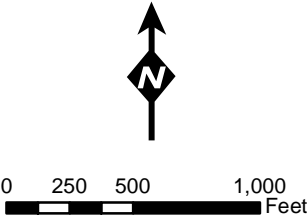


# CHILDER'S LAKESIDE COVE LAKE TEXOMA

SHORELINE ALLOCATIONS  
1996 SHORELINE MANAGEMENT PLAN



US Army Corps  
of Engineers  
Tulsa District

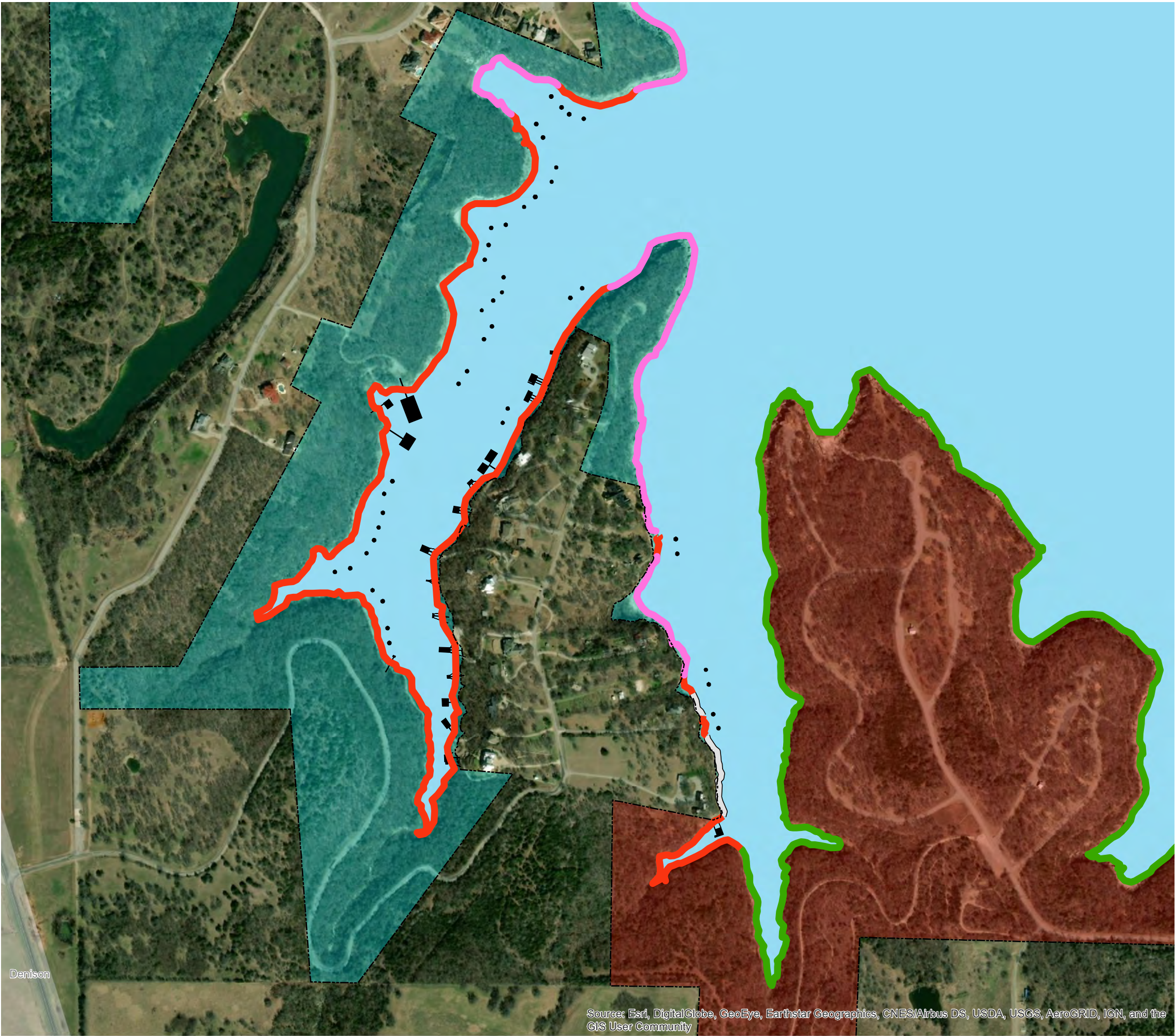
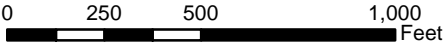


# ELM RIDGE COVE EAST AND ELM RIDGE COVE LAKE TEXOMA

SHORELINE ALLOCATIONS  
1996 SHORELINE MANAGEMENT PLAN



US Army Corps  
of Engineers  
Tulsa District



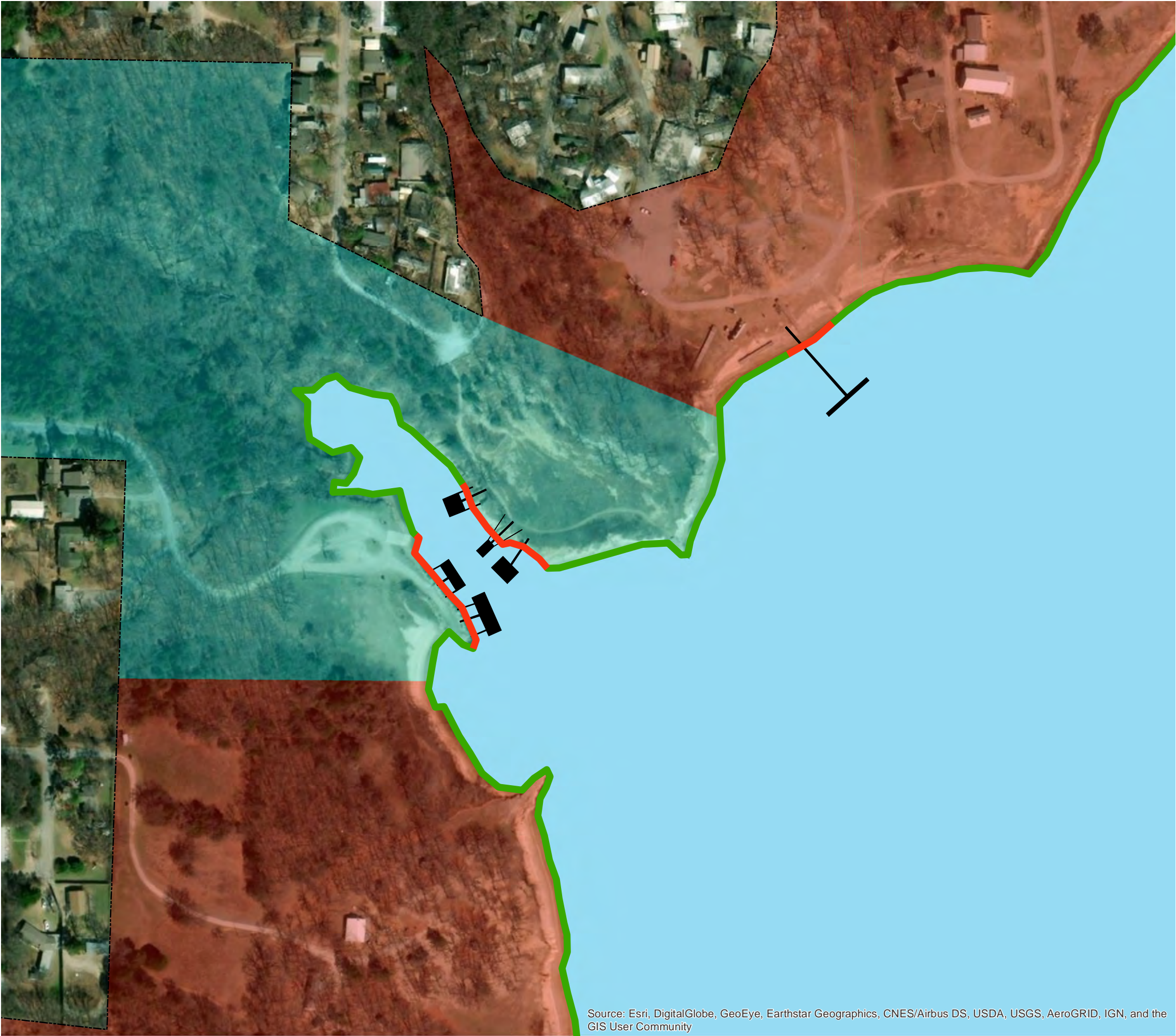
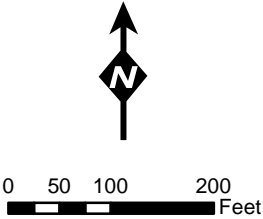
# HIGHLAND SHORES AND ELKS LODGE COVES

## LAKE TEXOMA

SHORELINE ALLOCATIONS  
1996 SHORELINE MANAGEMENT PLAN



US Army Corps  
of Engineers  
Tulsa District

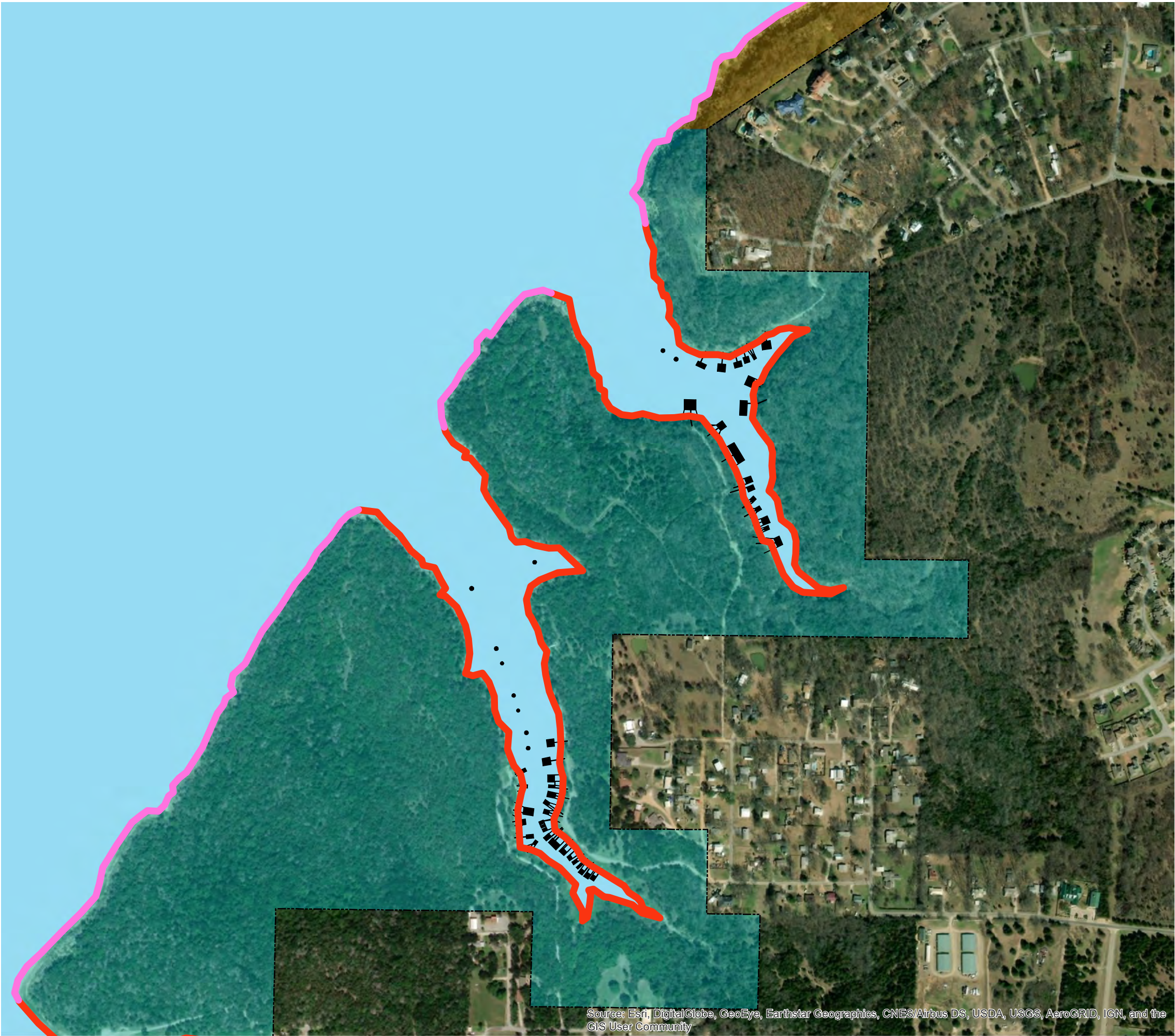
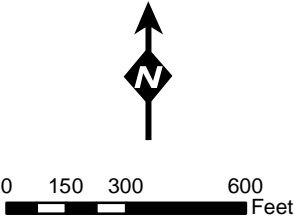


# LAZY ACRES AND CRAPPIE COVE LAKE TEXOMA

SHORELINE ALLOCATIONS  
1996 SHORELINE MANAGEMENT PLAN



US Army Corps  
of Engineers  
Tulsa District



# LITTLE MINERAL EAST COVE LAKE TEXOMA

SHORELINE ALLOCATIONS  
1996 SHORELINE MANAGEMENT PLAN



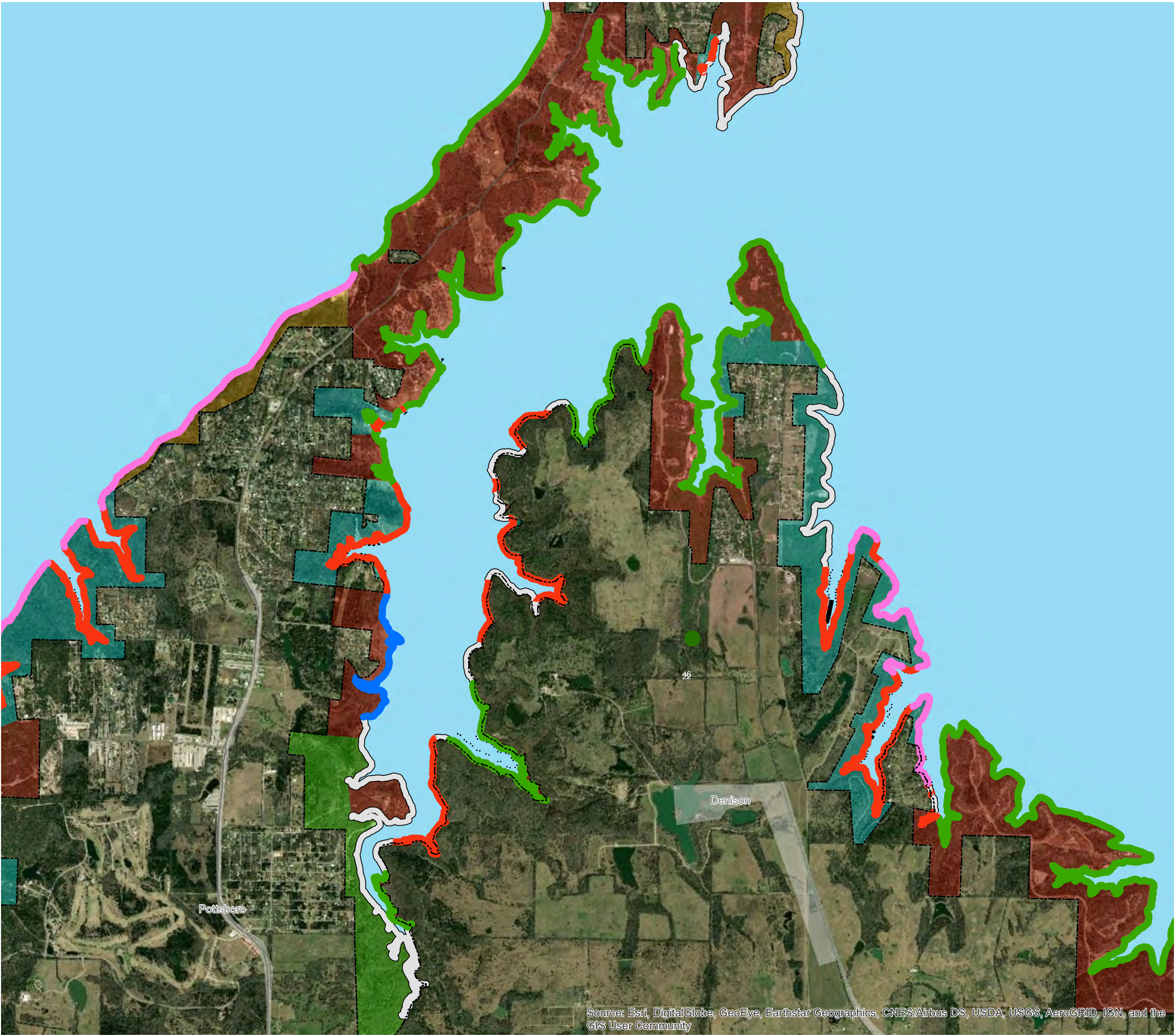
- AESTHETIC AREA
- LIMITED DEVELOPMENT AREA
- PROTECTED AREA
- PUBLIC RECREATION AREA
- PROHIBITED AREA
- RESTRICTED LIMITED DEVELOPMENT AREA
- PRIVATELY-OWNED BOAT DOCKS
- FEE BOUNDARY
- PROJECT OPERATIONS
- HIGH DENSITY RECREATION
- ENVIRONMENTALLY SENSITIVE AREAS
- LOW DENSITY RECREATION
- WILDLIFE MANAGEMENT
- VEGETATIVE MANAGEMENT
- FUTURE INACTIVE RECREATION



US Army Corps  
of Engineers  
Tulsa District

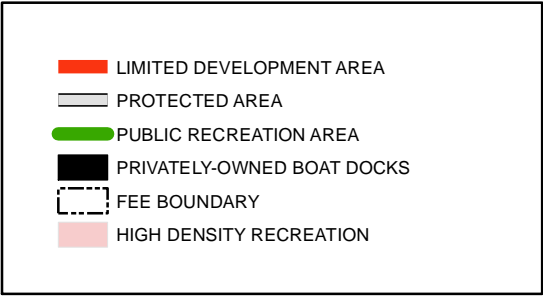


0 0.25 0.5 1 Miles

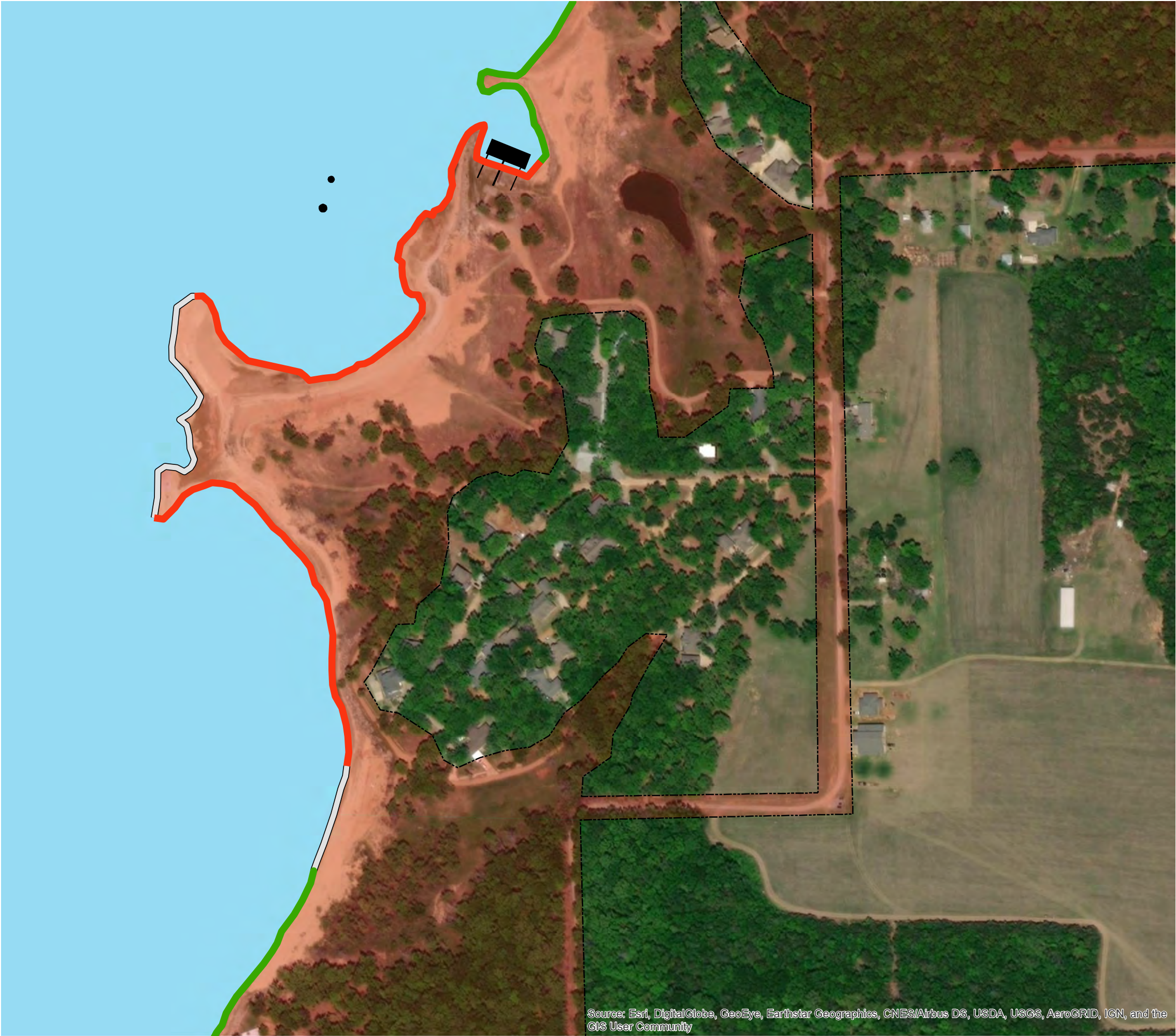
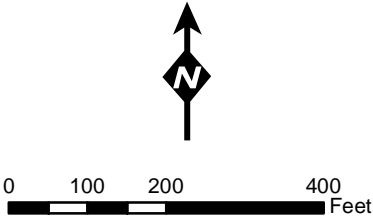


# LONG BEACH COVES LAKE TEXOMA

SHORELINE ALLOCATIONS  
1996 SHORELINE MANAGEMENT PLAN



US Army Corps  
of Engineers  
Tulsa District



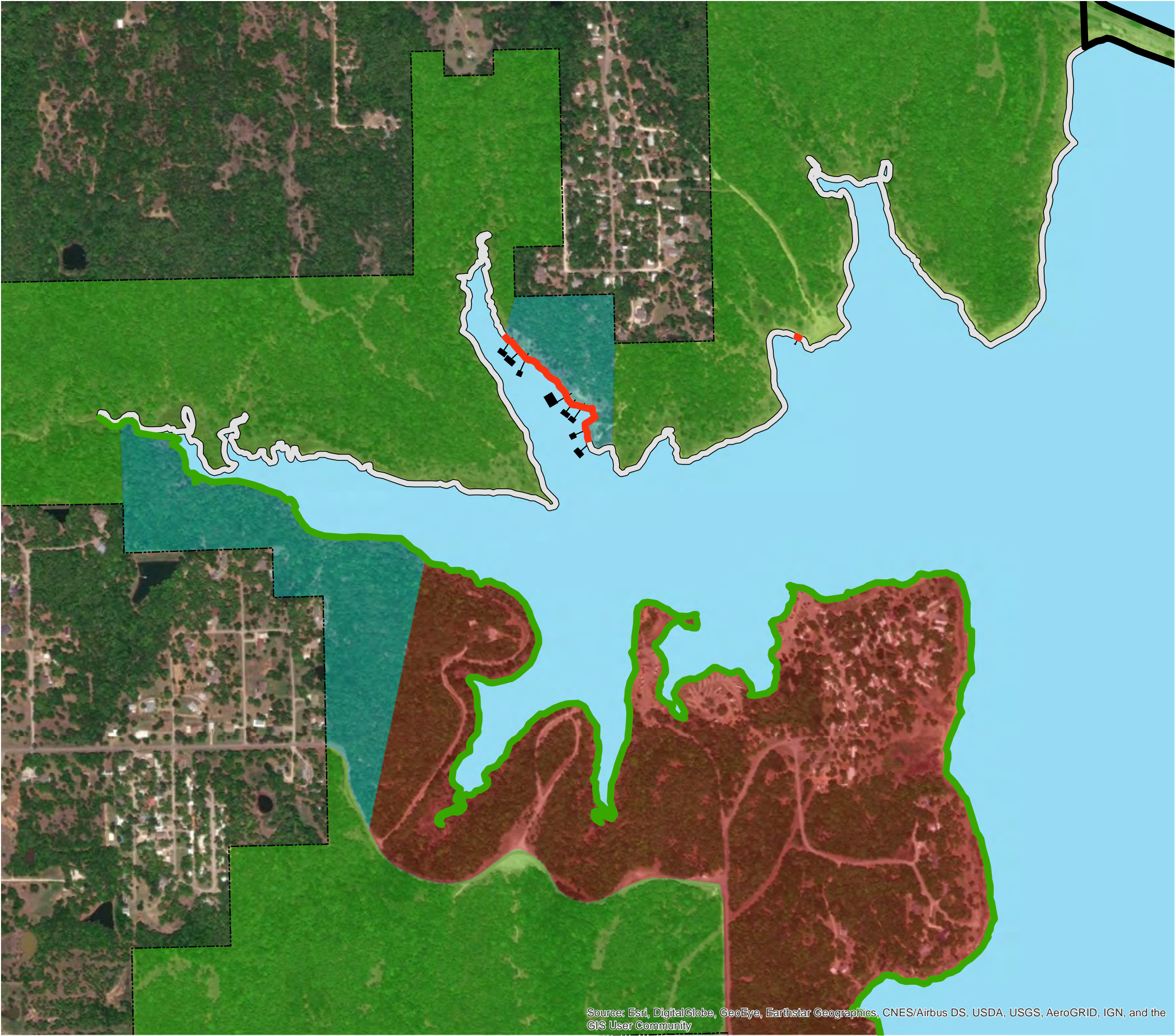
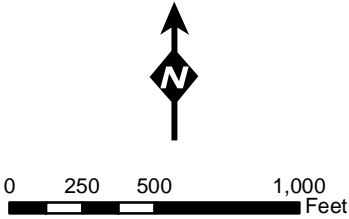
Source: Esri, DigitalGlobe, GeoEye, Earthstar Geographics, CNES/Airbus DS, USDA, USGS, AeroGRID, IGN, and the GIS User Community

# LOST ACRES COVE LAKE TEXOMA

SHORELINE ALLOCATIONS  
1996 SHORELINE MANAGEMENT PLAN



US Army Corps  
of Engineers  
Tulsa District



Source: Esri, DigitalGlobe, GeoEye, Earthstar Geographics, CNES/Airbus DS, USDA, USGS, AeroGRID, IGN, and the GIS User Community