

LAKE TEXOMA

SHORELINE ALLOCATIONS 1996 SHORELINE MANAGEMENT PLAN

PUBLIC USE AREAS

- | | |
|-------------------------|---------------------------------|
| 1 Dam Site Area | 25 Briar Creek |
| 2 Burns Run | 26 Lebanon Resort |
| 3 Sunset Camp | 27 Hickory Creek |
| 4 Willafa Woods | 28 Sheppard AFB Annex |
| 5 Platter Flats | 29 Texoma Marina and Resort |
| 6 Lakeside | 30 Rock Creek Marina and Resort |
| 7 Willow Springs | 31 Cedar Bayou |
| 8 Johnson Creek | 32 Juniper Point |
| 9 Newberry Creek | 33 Cedar Mills |
| 10 Kansas Creek | 34 Walnut Creek |
| 11 Butcher Pen | 35 Big Mineral |
| 12 Tishomingo City Park | 36 Flowing Wells |
| 13 Pennington Creek | 37 Paradise Cove |
| 14 Cumberland Cove | 38 Mill Creek |
| 15 Bridgeview | 39 Treasure Island |
| 16 Little Glasses | 40 North Island |
| 17 Texoma State Park | 41 Highport Resort |
| 18 Alberta Creek | 42 Island View |
| 19 Washita Point | 43 Preston Fishing Camp |
| 20 Roads End | 44 Preston Point |
| 21 Soldier Creek | 45 Preston Bend Resort |
| 22 Caney Creek | 46 Grandpappy Point |
| 23 Arrowhead Point | 47 Eisenhower State Park |
| 24 Buncombe Creek | |

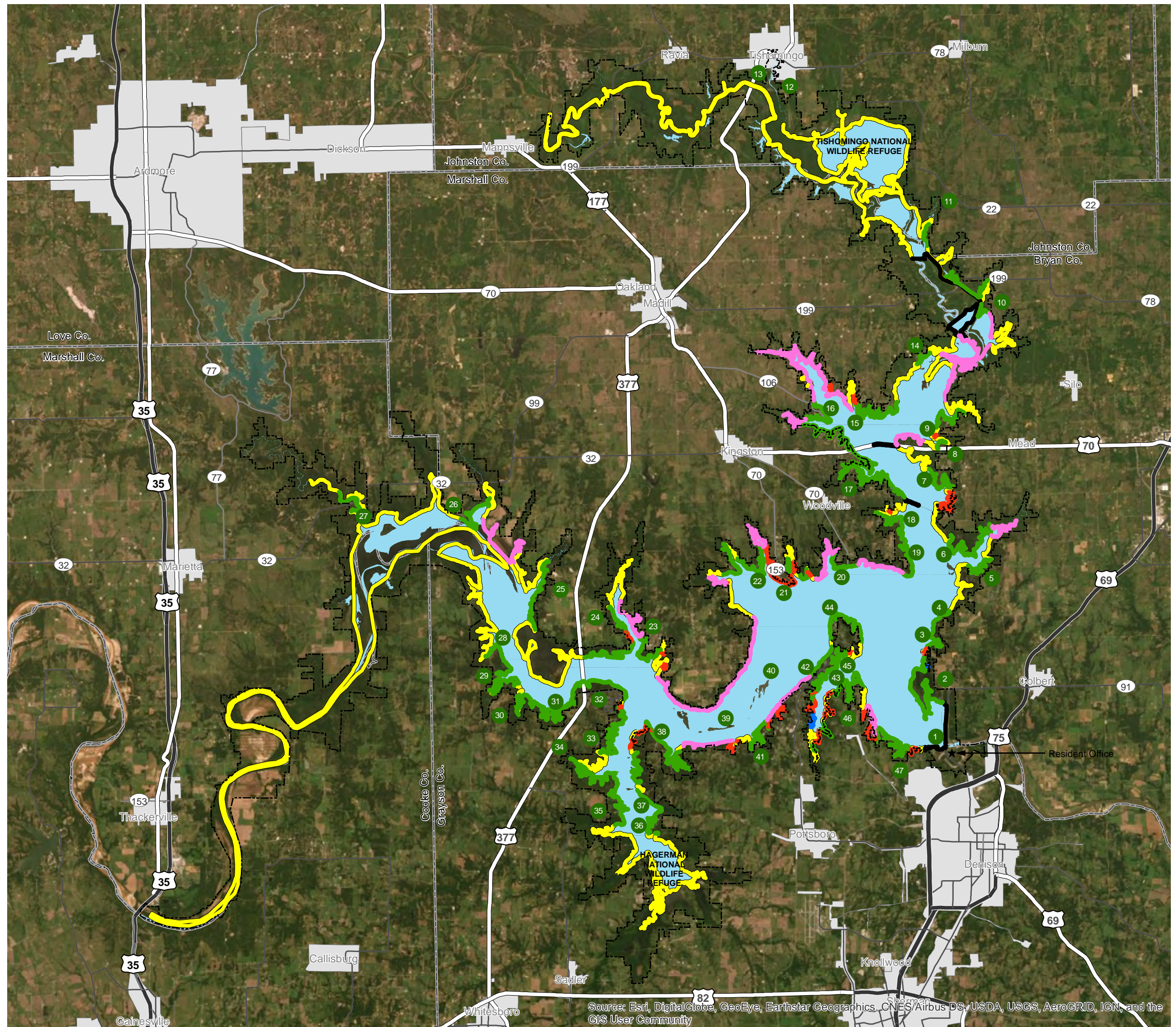
- AESTHETIC AREA
- LIMITED DEVELOPMENT AREA
- PROTECTED AREA
- PUBLIC RECREATION AREA
- PROHIBITED AREA
- RESTRICTED LIMITED DEVELOPMENT AREA
- PRIVATELY-OWNED BOAT DOCKS
- FEE BOUNDARY



US Army Corps
of Engineers
Tulsa District



0 1.25 2.5 5
Miles



Source: Esri, DigitalGlobe, GeoEye, Earthstar Geographics, CNES/Airbus DS, USDA, USGS, AeroGRID, IGN, and the GIS User Community