

A-26

PJD LIMITS, AERIAL PHOTOGRAPH PLATE LOCATIONS

FIGURE 26 OF 73  
MARCH 25, 2008

PROPOSED BOIS D'ARC RESERVOIR - RAW WATER TRANSMISSION PIPELINE •





120 FOOT TEMPORARY EASEMENT

1,000 500 0 1,000 Feet



ALAN PLUMMER  
ASSOCIATES, INC.

ENVIRONMENTAL ENGINEERS - DESIGNERS - SCIENTISTS



FIGURE 27 OF 73  
MARCH 24, 2008

A

A-27  
PJD LIMITS, 2004 AERIAL PHOTOGRAPH  
PROPOSED BOIS D'ARC RESERVOIR - RAW WATER TRANSMISSION PIPELINE\*





120 FOOT TEMPORARY EASEMENT



ALAN PLUMMER  
ASSOCIATES, INC.

ENVIRONMENTAL ENGINEERS - DESIGNERS - SCIENTISTS

1,000 500 0 1,000 Feet



A-28

PJD LIMITS, 2004 AERIAL PHOTOGRAPH  
PROPOSED BOIS D'ARC RESERVOIR - RAW WATER TRANSMISSION PIPELINE\*





A-29  
PJD LIMITS, 2004 AERIAL PHOTOGRAPH  
PROPOSED BOIS D'ARC RESERVOIR - RAW WATER TRANSMISSION PIPELINE



120 FOOT TEMPORARY EASEMENT

1,000 500 0 1,000 Feet

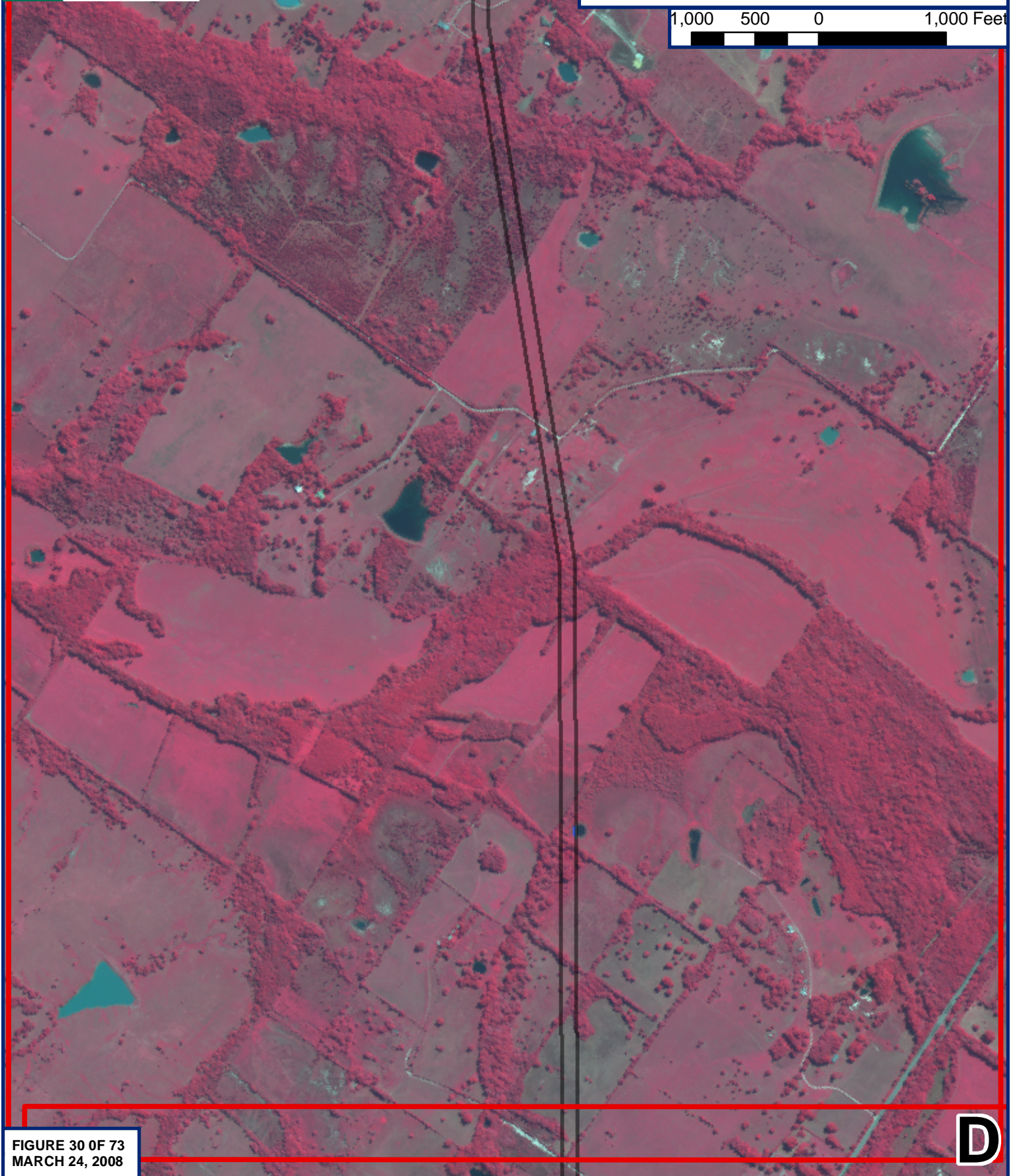


FIGURE 30 OF 73  
MARCH 24, 2008

D

A-30  
PJD LIMITS, 2004 AERIAL PHOTOGRAPH  
PROPOSED BOIS D'ARC RESERVOIR - RAW WATER TRANSMISSION PIPELINE



120 FOOT TEMPORARY EASEMENT

1,000 500 0 1,000 Feet

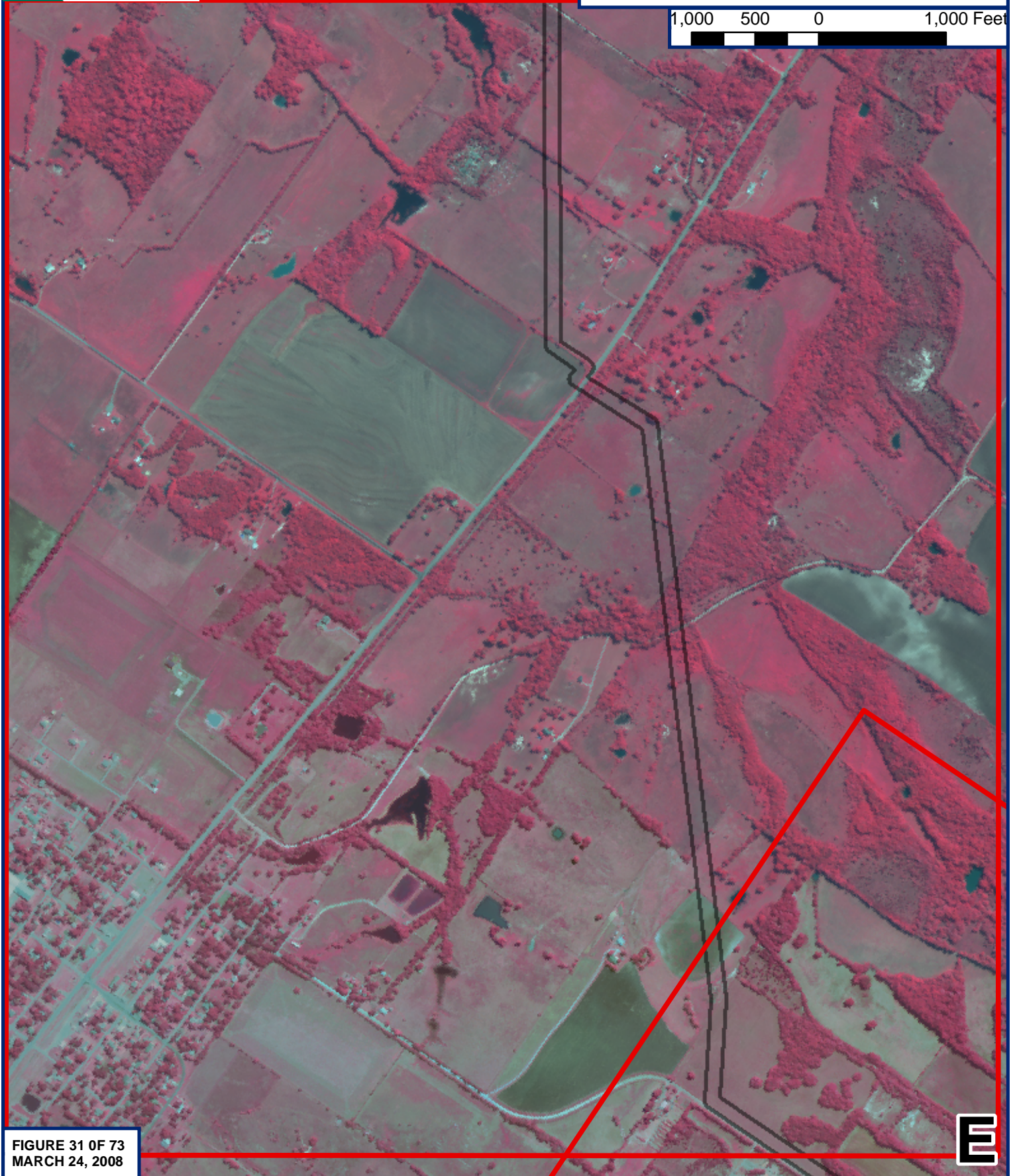


FIGURE 31 OF 73  
MARCH 24, 2008

A-31  
PJD LIMITS, 2004 AERIAL PHOTOGRAPH  
PROPOSED BOIS D'ARC RESERVOIR - RAW WATER TRANSMISSION PIPELINE



120 FOOT TEMPORARY EASEMENT

1,000 500 0 1,000 Feet



FIGURE 32 OF 73  
MARCH 24, 2008

A-32  
PJD LIMITS, 2004 AERIAL PHOTOGRAPH  
PROPOSED BOIS D'ARC RESERVOIR - RAW WATER TRANSMISSION PIPELINE'





120 FOOT TEMPORARY EASEMENT

1,000 500 0 1,000 Feet



FIGURE 33 OF 73  
MARCH 24, 2008



ALAN PLUMMER  
ASSOCIATES, INC.  
ENVIRONMENTAL ENGINEERS • DESIGNERS • SCIENTISTS



**A-33**  
**PJD LIMITS, 2004 AERIAL PHOTOGRAPH**  
**PROPOSED BOIS D'ARC RESERVOIR - RAW WATER TRANSMISSION PIPELINE'**



120 FOOT TEMPORARY EASEMENT

1,000 500 0 1,000 Feet

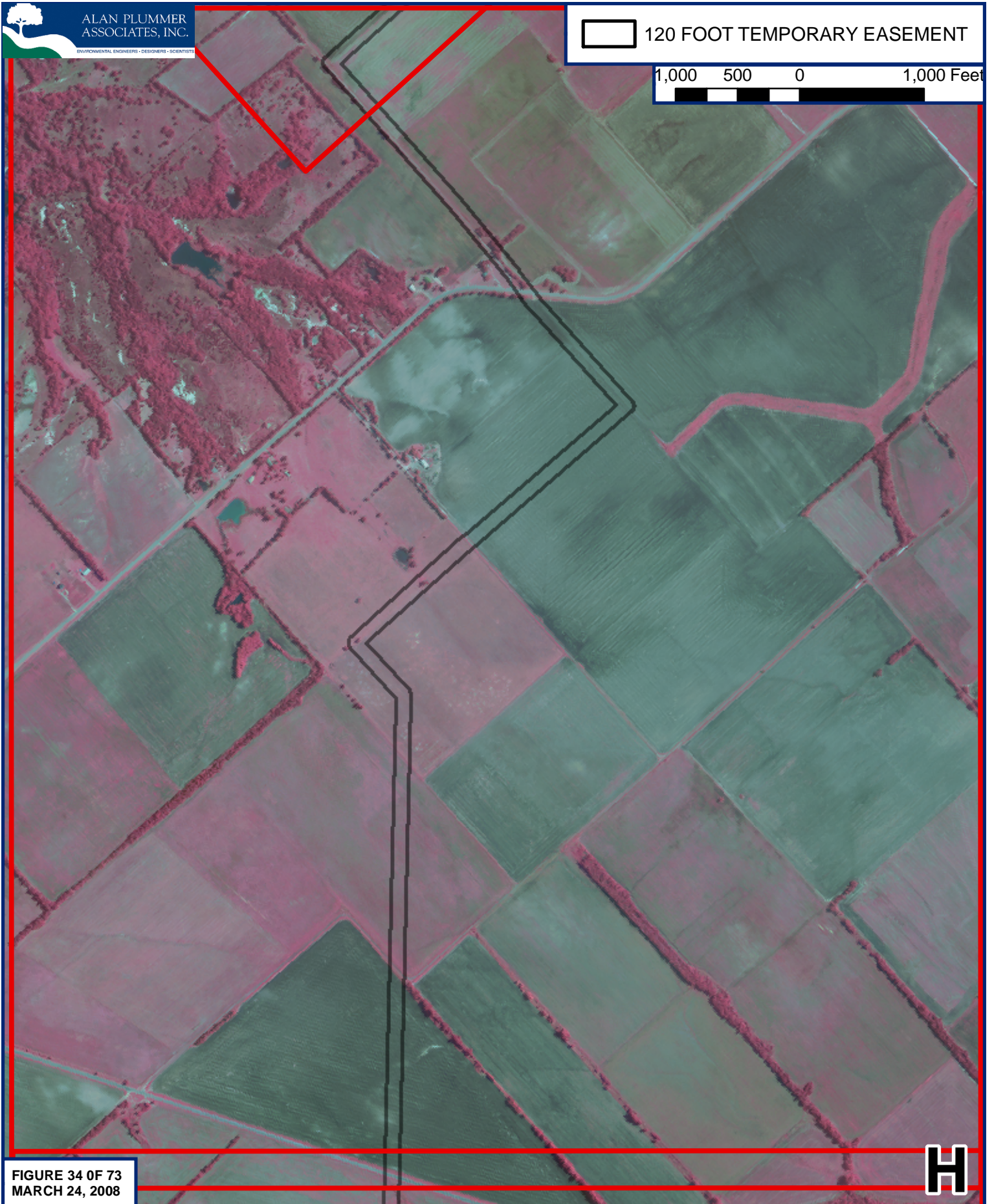


FIGURE 34 OF 73  
MARCH 24, 2008

H



120 FOOT TEMPORARY EASEMENT

1,000 500 0 1,000 Feet

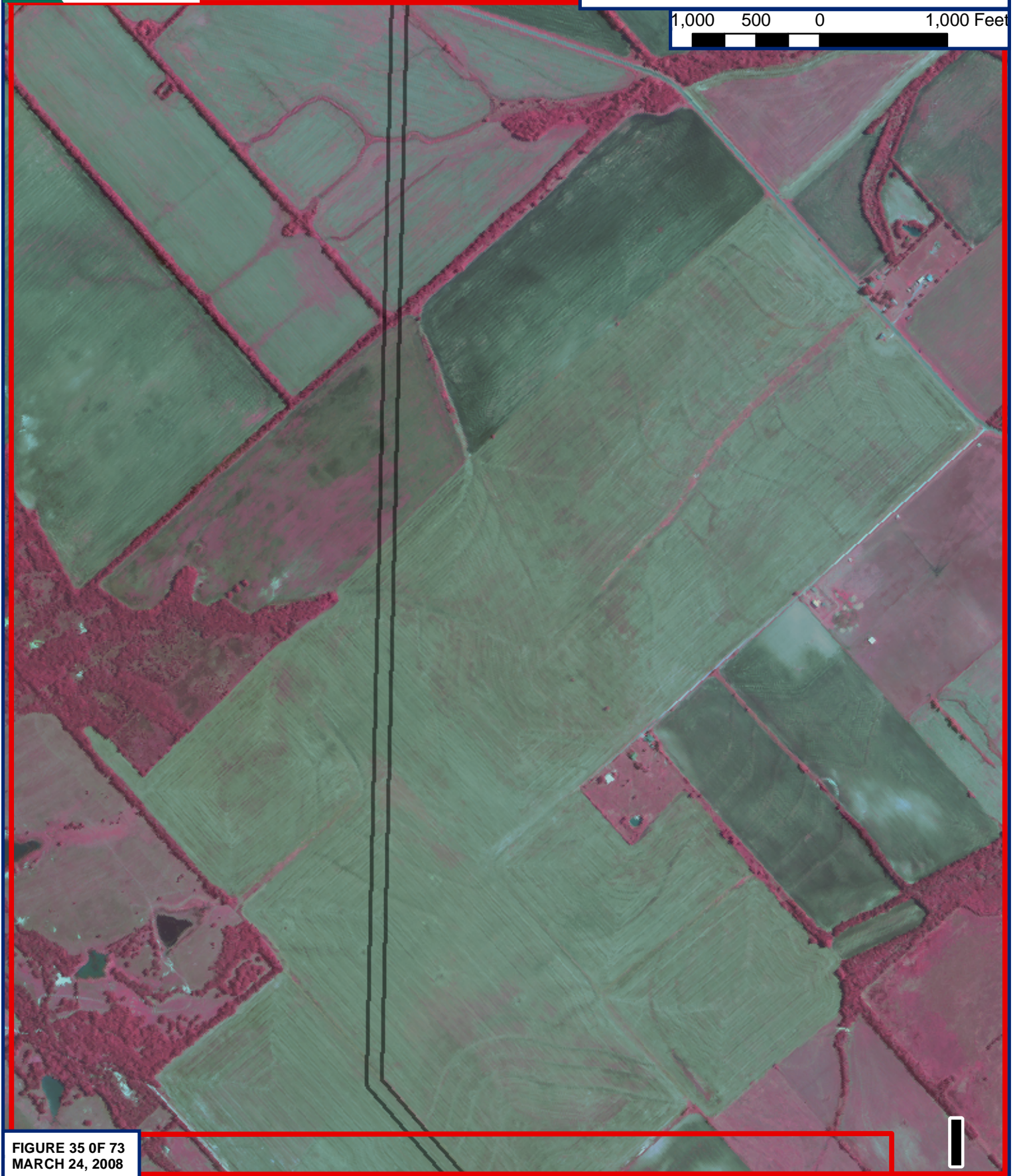


FIGURE 35 OF 73  
MARCH 24, 2008

A-35  
PJD LIMITS, 2004 AERIAL PHOTOGRAPH  
PROPOSED BOIS D'ARC RESERVOIR - RAW WATER TRANSMISSION PIPELINE





120 FOOT TEMPORARY EASEMENT



ALAN PLUMMER  
ASSOCIATES, INC.  
ENVIRONMENTAL ENGINEERS - DESIGNERS - SCIENTISTS

1,000 500 0 1,000 Feet

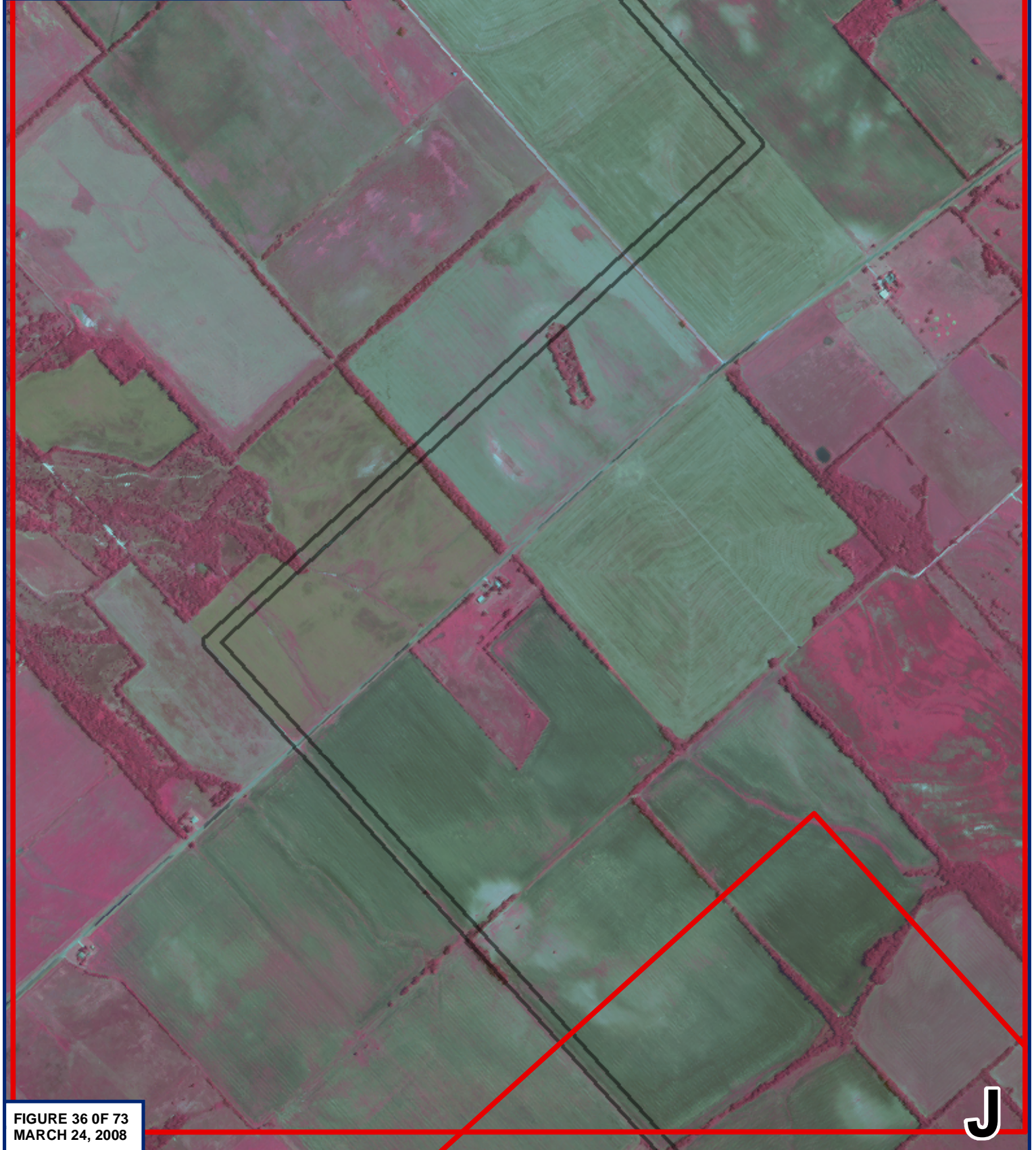


FIGURE 36 OF 73  
MARCH 24, 2008

J

A-36  
PJD LIMITS, 2004 AERIAL PHOTOGRAPH  
PROPOSED BOIS D'ARC RESERVOIR - RAW WATER TRANSMISSION PIPELINE





120 FOOT TEMPORARY EASEMENT



ALAN PLUMMER  
ASSOCIATES, INC.  
ENVIRONMENTAL ENGINEERS - DESIGNERS - SCIENTISTS

1,000 500 0 1,000 Feet

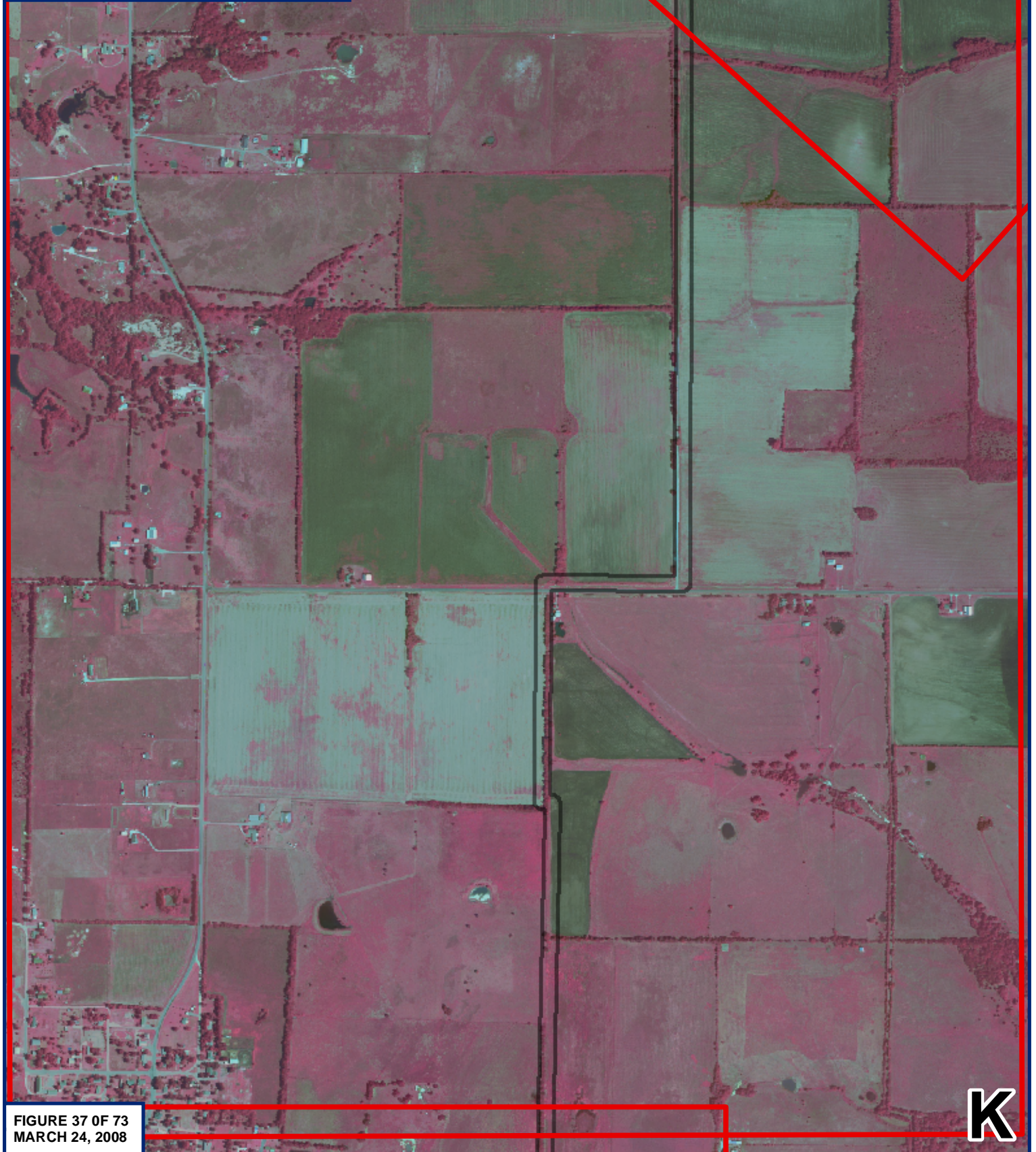


FIGURE 37 OF 73  
MARCH 24, 2008

K

A-37  
PJD LIMITS, 2004 AERIAL PHOTOGRAPH  
PROPOSED BOIS D'ARC RESERVOIR - RAW WATER TRANSMISSION PIPELINE\*



120 FOOT TEMPORARY EASEMENT

1,000 500 0 1,000 Feet

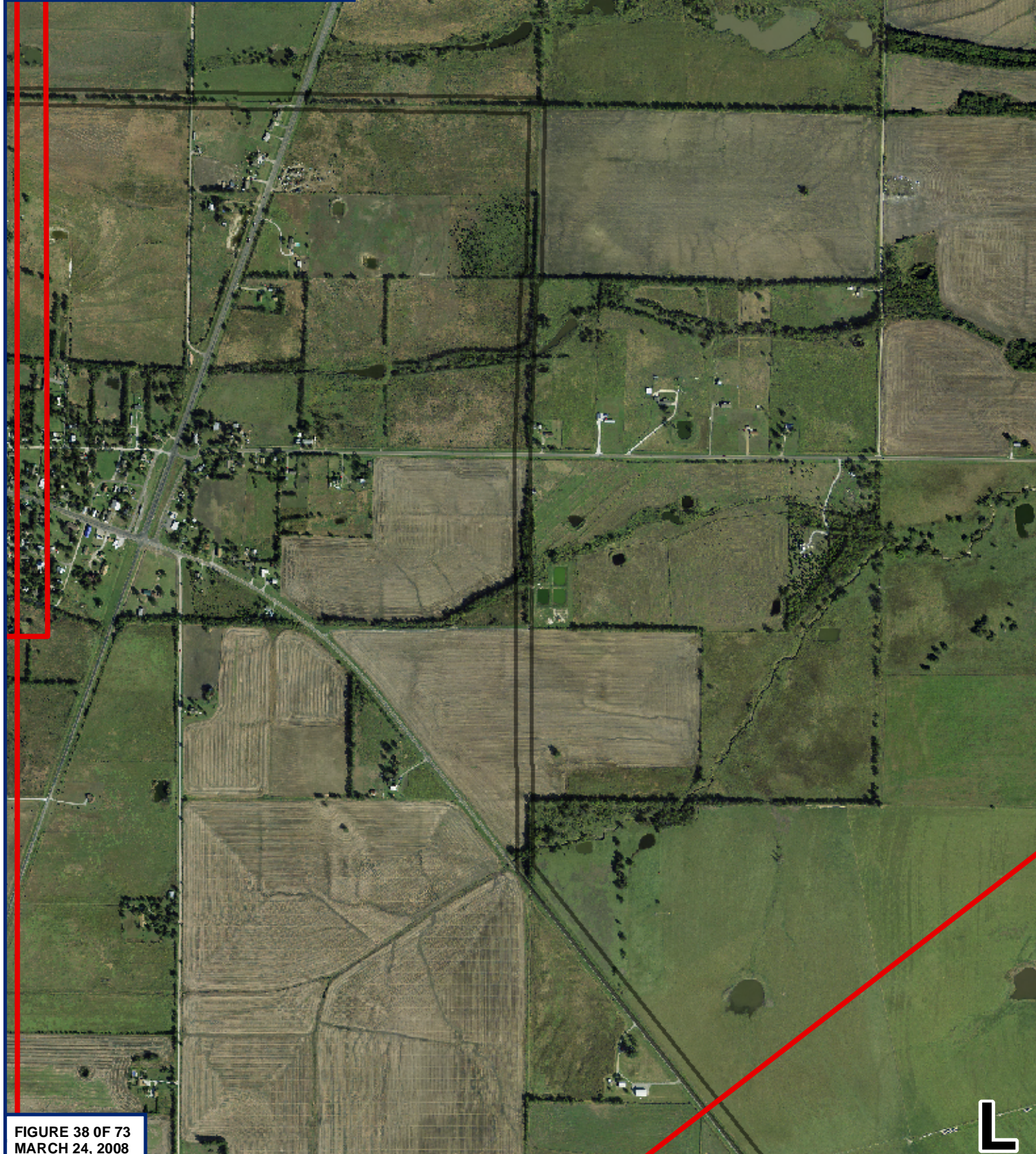


FIGURE 38 OF 73  
MARCH 24, 2008



120 FOOT TEMPORARY EASEMENT

1,000 500 0 1,000 Feet



FIGURE 39 OF 73  
MARCH 24, 2008

A-39  
PJD LIMITS, 2007 AERIAL PHOTOGRAPH  
PROPOSED BOIS D'ARC RESERVOIR - RAW WATER TRANSMISSION PIPELINE



120 FOOT TEMPORARY EASEMENT

1,000 500 0 1,000 Feet



FIGURE 40 OF 73  
MARCH 24, 2008

A-40  
PJD LIMITS, 2007 AERIAL PHOTOGRAPH  
PROPOSED BOIS D'ARC RESERVOIR - RAW WATER TRANSMISSION PIPELINE



120 FOOT TEMPORARY EASEMENT

1,000 500 0 1,000 Feet

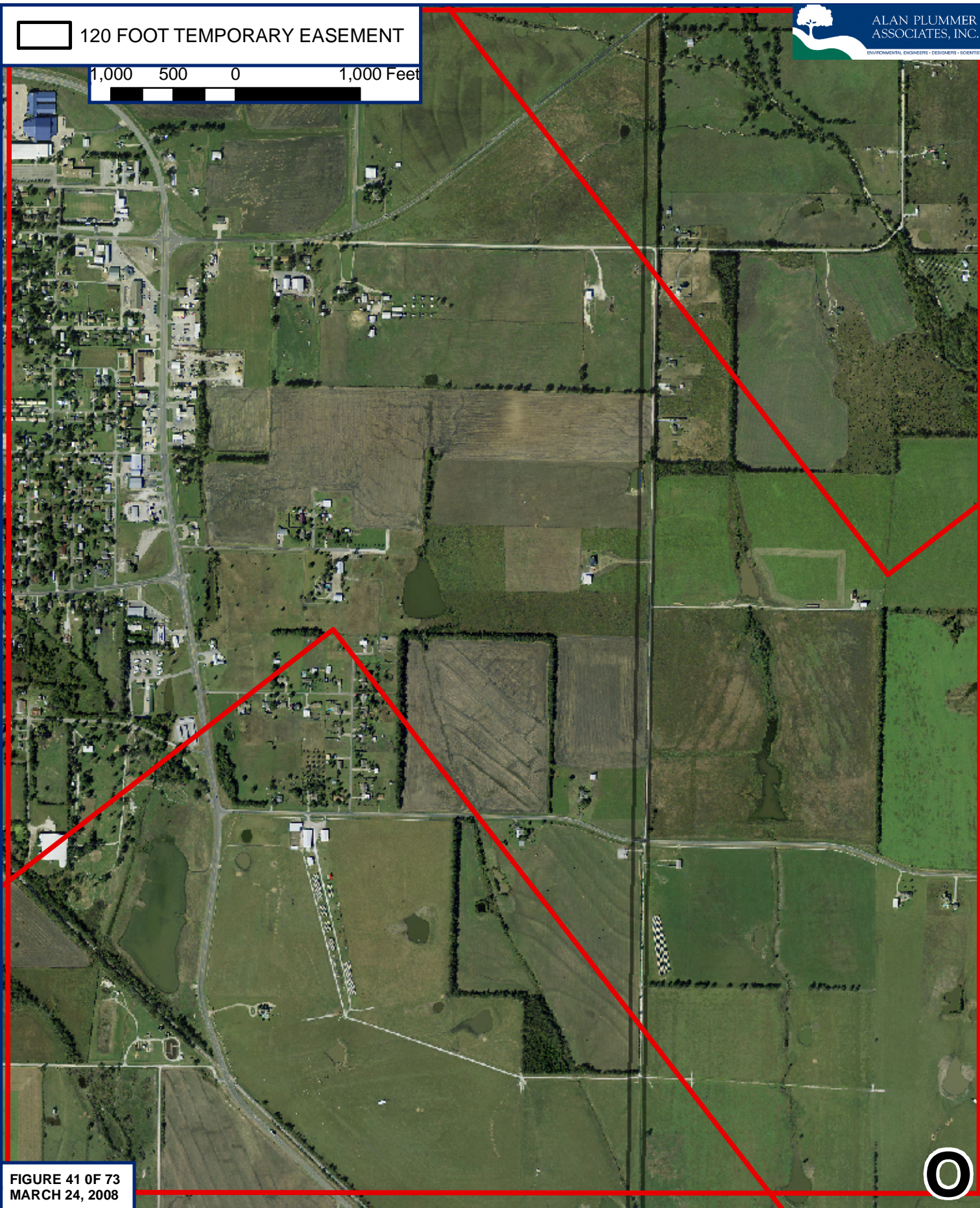


FIGURE 41 OF 73  
MARCH 24, 2008

A-41  
PJD LIMITS, 2007 AERIAL PHOTOGRAPH  
PROPOSED BOIS D'ARC RESERVOIR - RAW WATER TRANSMISSION PIPELINE\*





120 FOOT TEMPORARY EASEMENT

1,000 500 0 1,000 Feet



ALAN PLUMMER  
ASSOCIATES, INC.  
ENVIRONMENTAL ENGINEERS - DESIGNERS - SCIENTISTS



FIGURE 42 OF 73  
MARCH 24, 2008

P

A-42  
PJD LIMITS, 2007 AERIAL PHOTOGRAPH  
PROPOSED BOIS D'ARC RESERVOIR - RAW WATER TRANSMISSION PIPELINE





120 FOOT TEMPORARY EASEMENT



ALAN PLUMMER  
ASSOCIATES, INC.  
ENVIRONMENTAL ENGINEERS - DESIGNERS - SCIENTISTS

1,000 500 0 1,000 Feet



FIGURE 43 OF 73  
MARCH 24, 2008



A-43  
PJD LIMITS, 2007 AERIAL PHOTOGRAPH  
PROPOSED BOIS D'ARC RESERVOIR - RAW WATER TRANSMISSION PIPELINE





120 FOOT TEMPORARY EASEMENT



ALAN PLUMMER  
ASSOCIATES, INC.  
ENVIRONMENTAL ENGINEERS • DESIGNERS • SCIENTISTS

1,000 500 0 1,000 Feet



FIGURE 44 OF 73  
MARCH 24, 2008

R

A-44  
PJD LIMITS, 2007 AERIAL PHOTOGRAPH  
PROPOSED BOIS D'ARC RESERVOIR - RAW WATER TRANSMISSION PIPELINE





120 FOOT TEMPORARY EASEMENT



ALAN PLUMMER  
ASSOCIATES, INC.

ENVIRONMENTAL ENGINEERS - DESIGNERS - SCIENTISTS

1,000 500 0 1,000 Feet



FIGURE 45 OF 73  
MARCH 24, 2008



A-45  
PJD LIMITS, 2007 AERIAL PHOTOGRAPH  
PROPOSED BOIS D'ARC RESERVOIR - RAW WATER TRANSMISSION PIPELINE



120 FOOT TEMPORARY EASEMENT

1,000 500 0 1,000 Feet



FIGURE 46 OF 73  
MARCH 24, 2008

A-46  
PJ D LIMITS, 2007 AERIAL PHOTOGRAPH  
PROPOSED BOIS D'ARC RESERVOIR - RAW WATER TRANSMISSION PIPELINE



120 FOOT TEMPORARY EASEMENT

1,000 500 0 1,000 Feet



FIGURE 47 OF 73  
MARCH 24, 2008

A-47  
PJD LIMITS, 2007 AERIAL PHOTOGRAPH  
PROPOSED BOIS D'ARC RESERVOIR - RAW WATER TRANSMISSION PIPELINE





120 FOOT TEMPORARY EASEMENT



ALAN PLUMMER  
ASSOCIATES, INC.

ENVIRONMENTAL ENGINEERS - DESIGNERS - SCIENTISTS

1,000 500 0 1,000 Feet

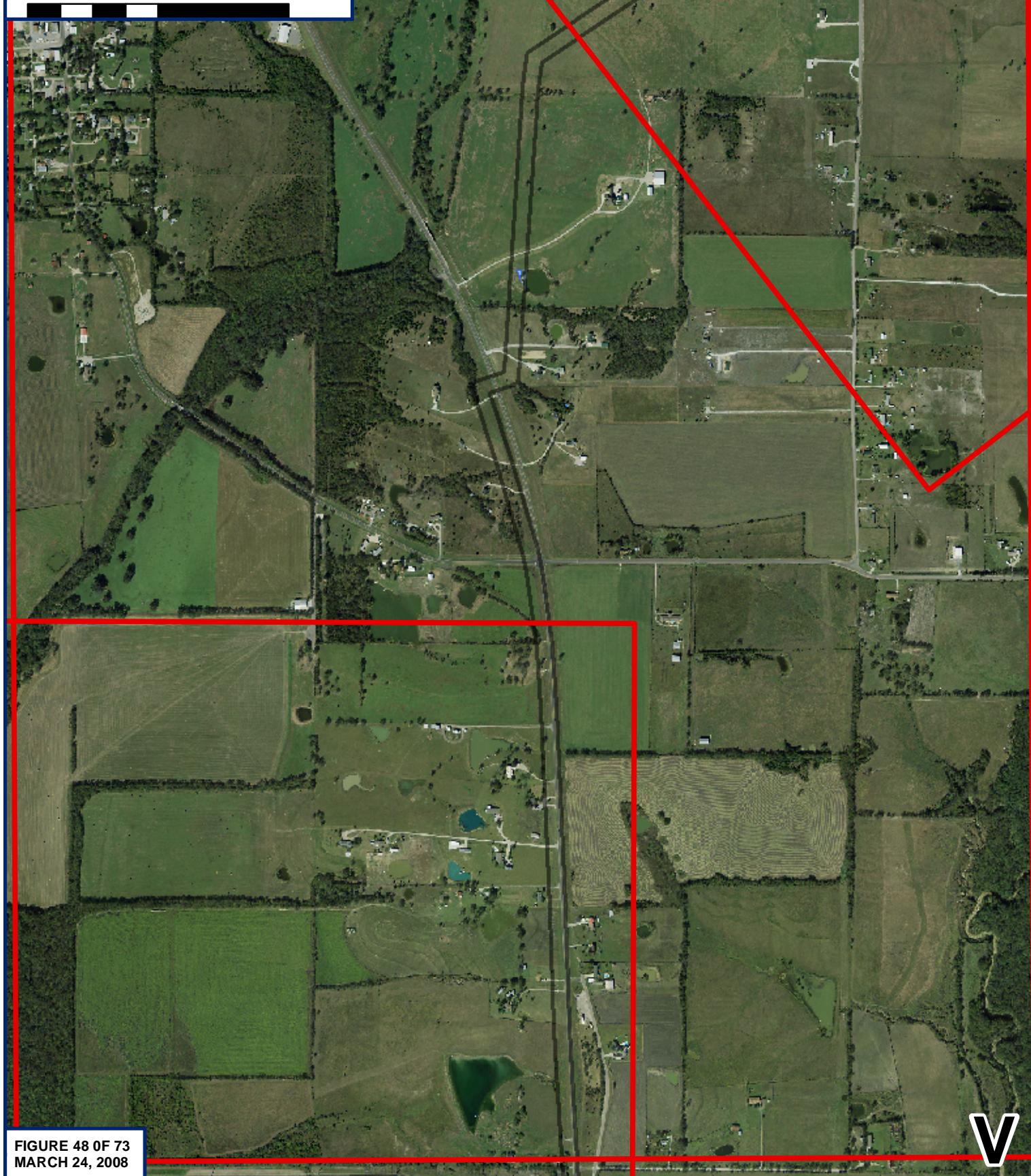


FIGURE 48 OF 73  
MARCH 24, 2008

A-48

PJD LIMITS, 2007 AERIAL PHOTOGRAPH  
PROPOSED BOIS D'ARC RESERVOIR - RAW WATER TRANSMISSION PIPELINE\*



120 FOOT TEMPORARY EASEMENT

1,000 500 0 1,000 Feet

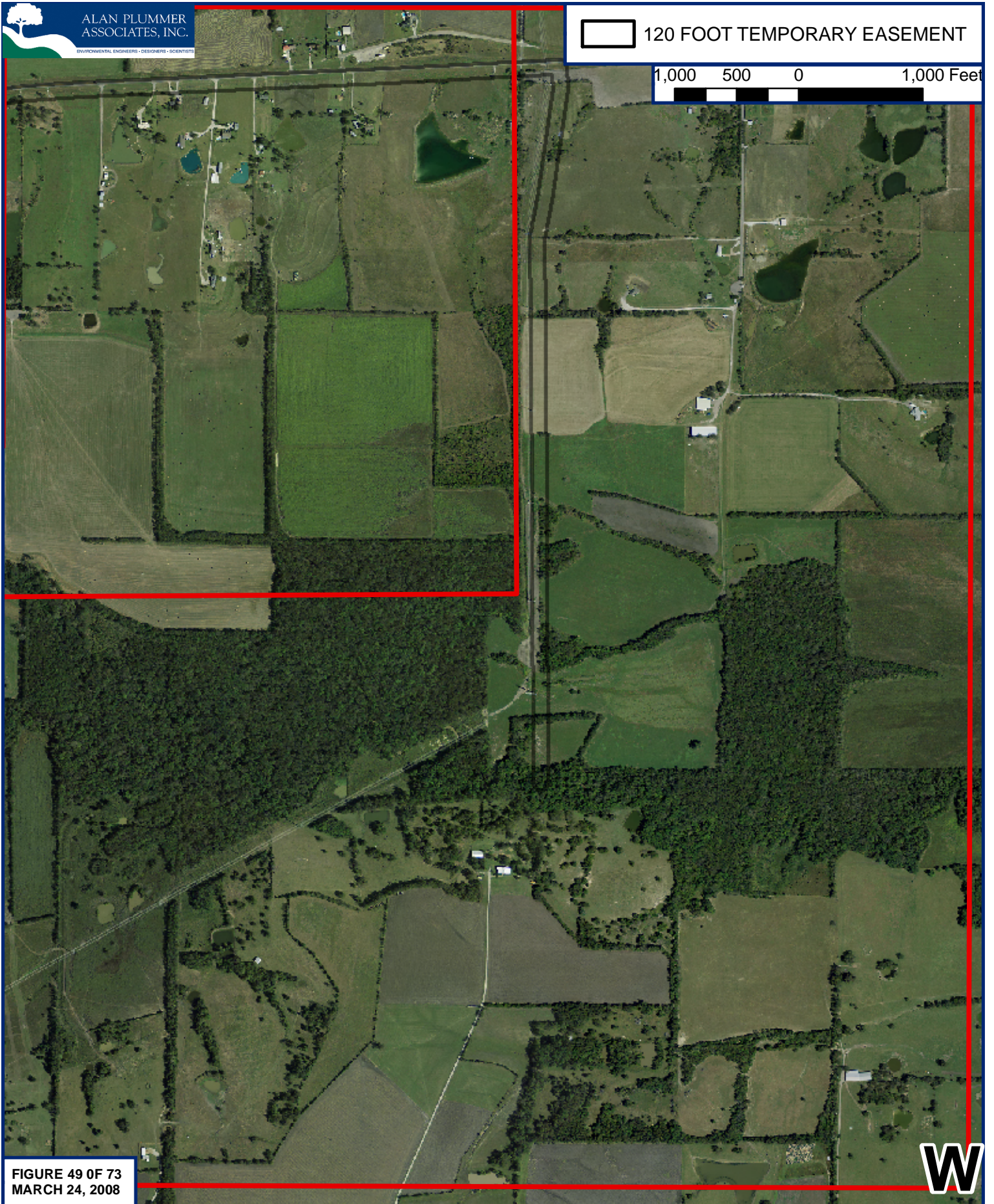


FIGURE 49 OF 73  
MARCH 24, 2008

A-49  
PJD LIMITS, 2007 AERIAL PHOTOGRAPH  
PROPOSED BOIS D'ARC RESERVOIR - RAW WATER TRANSMISSION PIPELINE