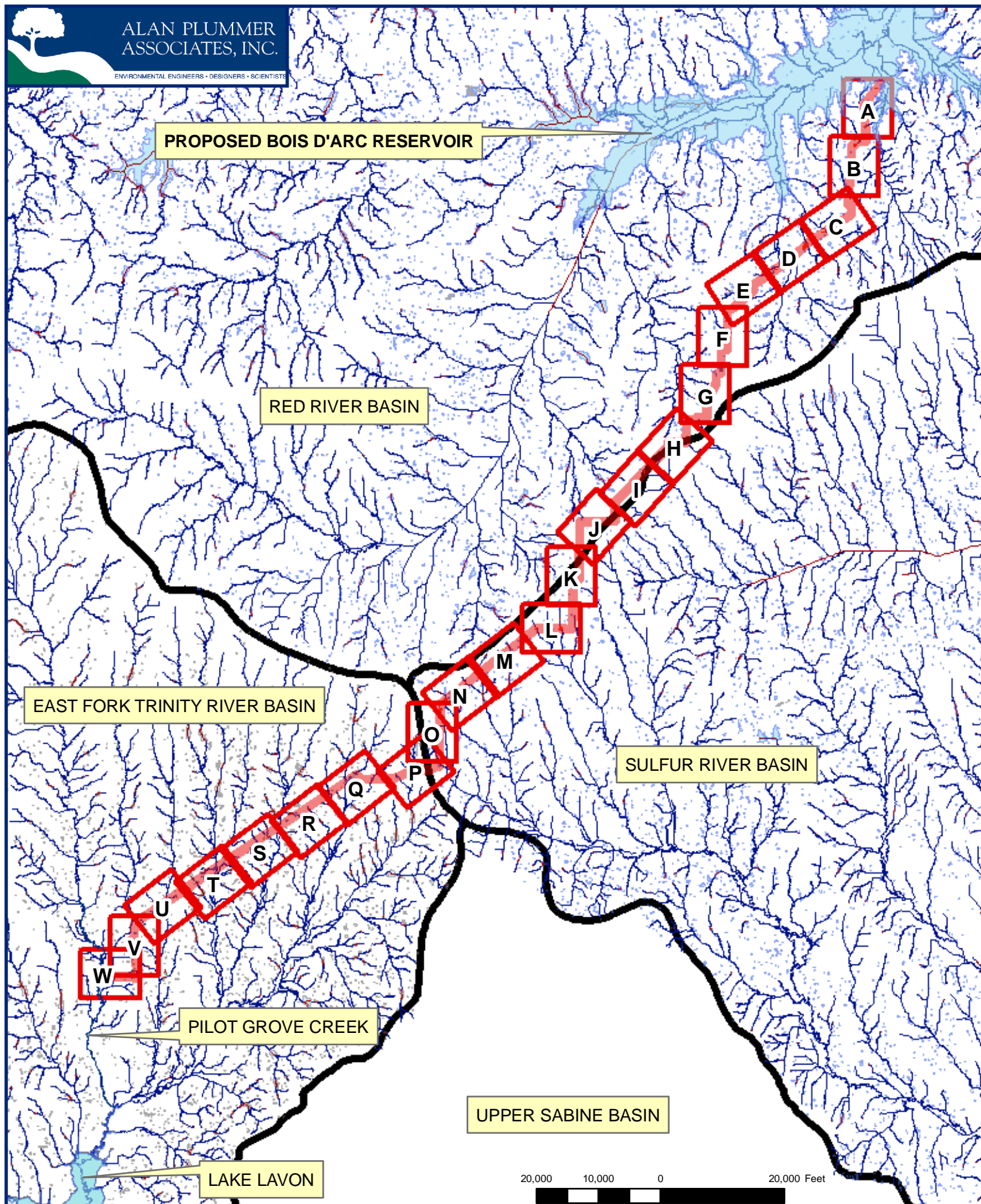




ALAN PLUMMER
ASSOCIATES, INC.

ENVIRONMENTAL ENGINEERS • DESIGNERS • SCIENTISTS



A-50

PJD RESULTS PLATE LOCATIONS

FIGURE 50 OF 73
MARCH 25, 2008

PROPOSED BOIS D'ARC RESERVOIR - RAW WATER TRANSMISSION PIPELINE •

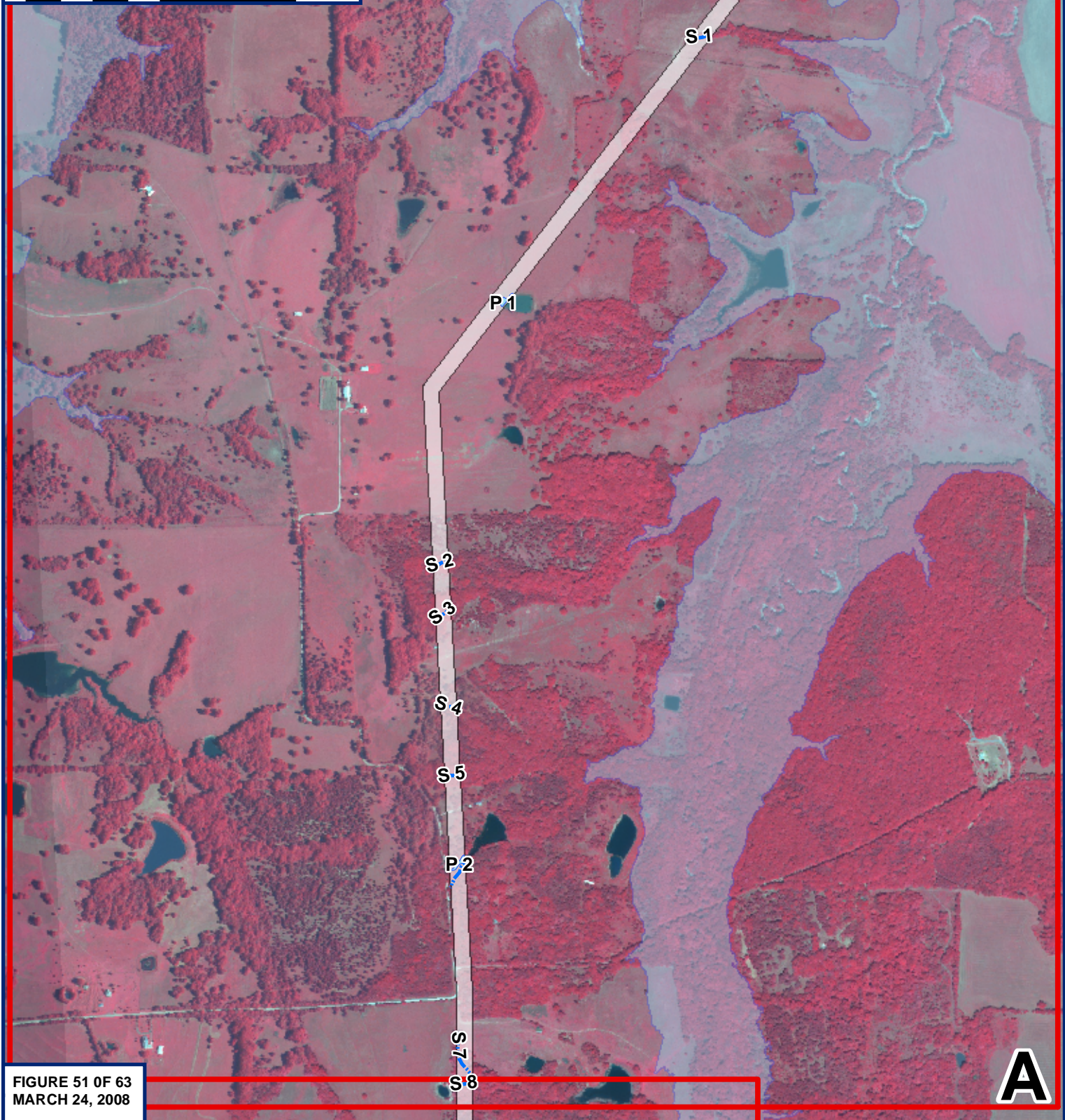
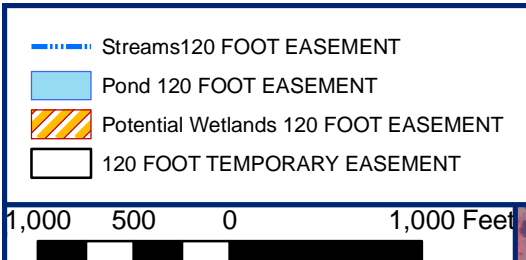


FIGURE 51 OF 63
MARCH 24, 2008

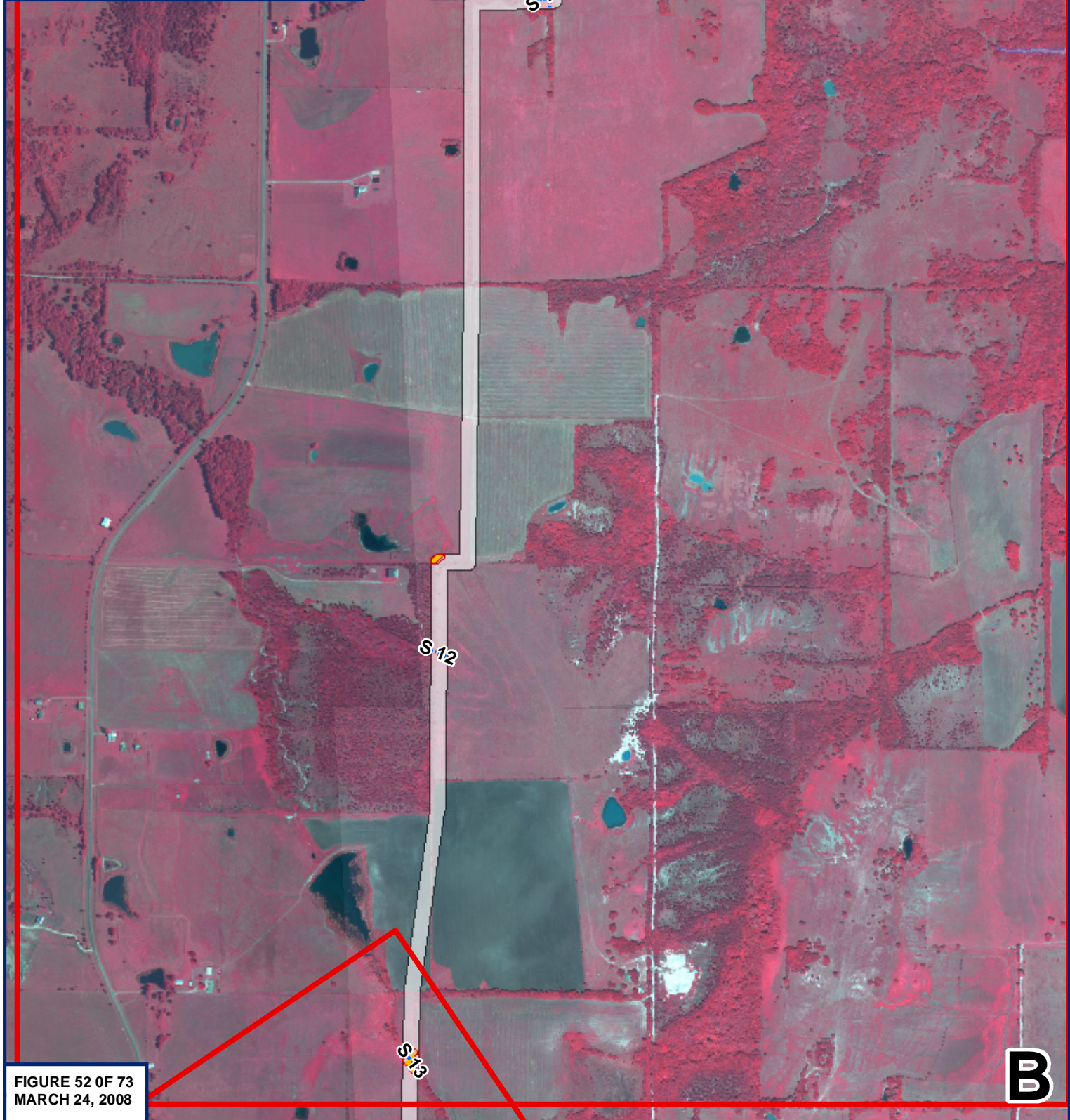
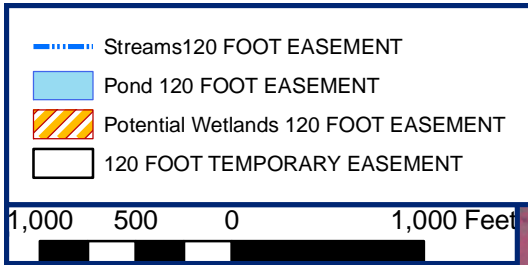
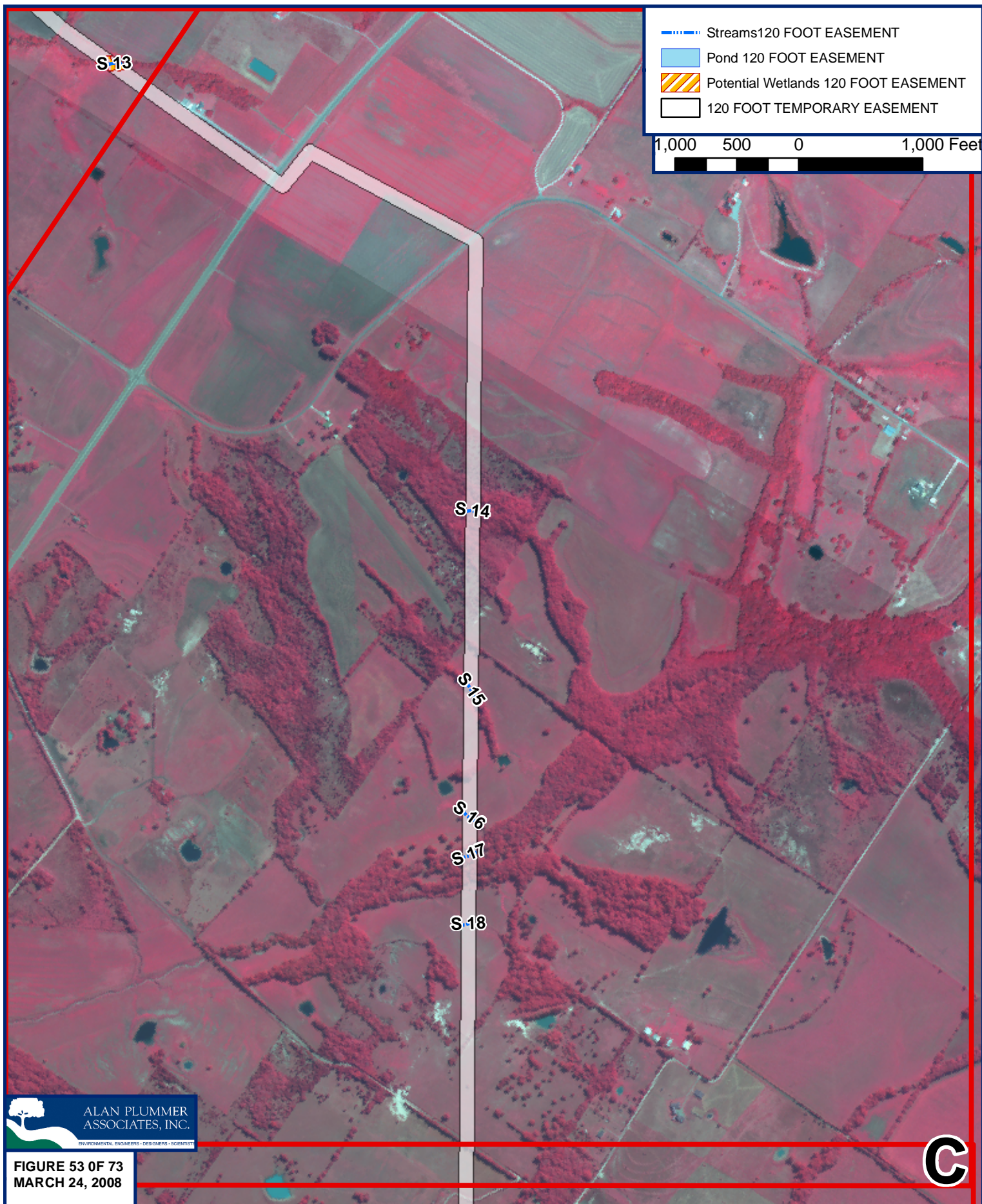


FIGURE 52 OF 73
MARCH 24, 2008

B



A-53
PJD RESULTS
PROPOSED BOIS D'ARC RESERVOIR - RAW WATER TRANSMISSION PIPELINE

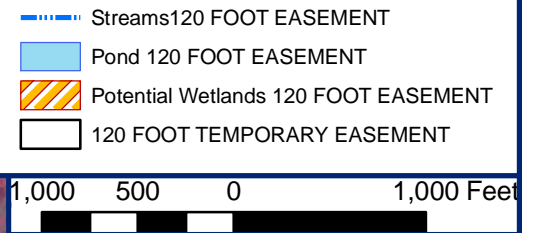


FIGURE 54 OF 73
MARCH 24, 2008

D

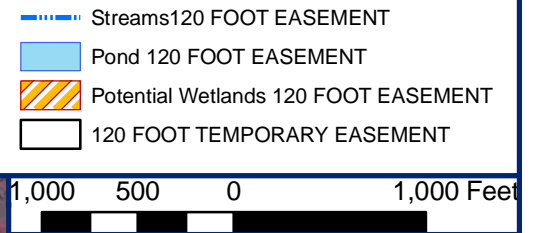


FIGURE 55 OF 73
MARCH 24, 2008



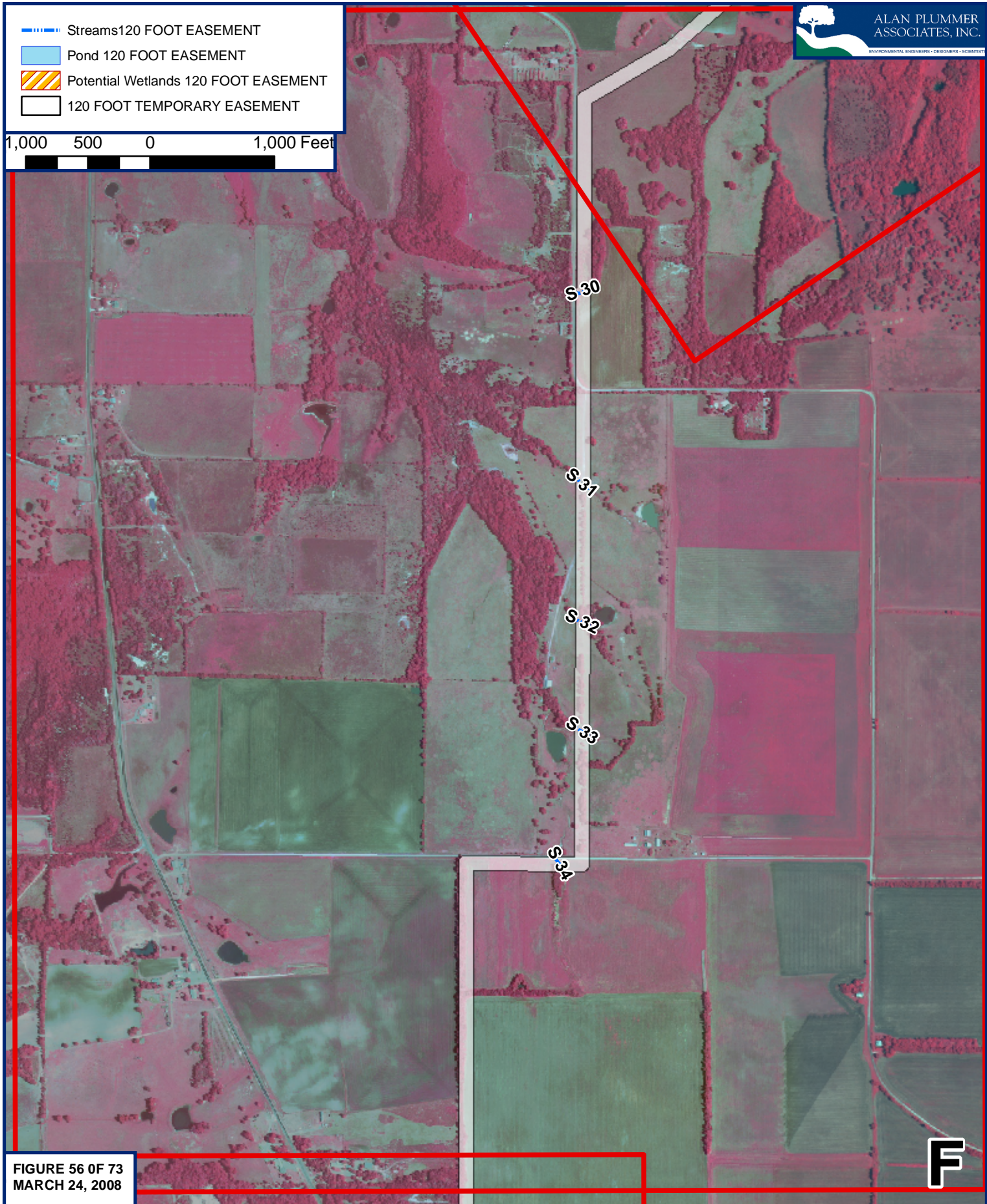
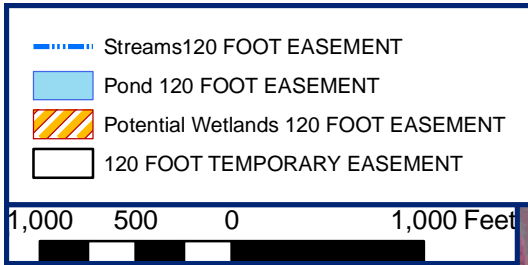
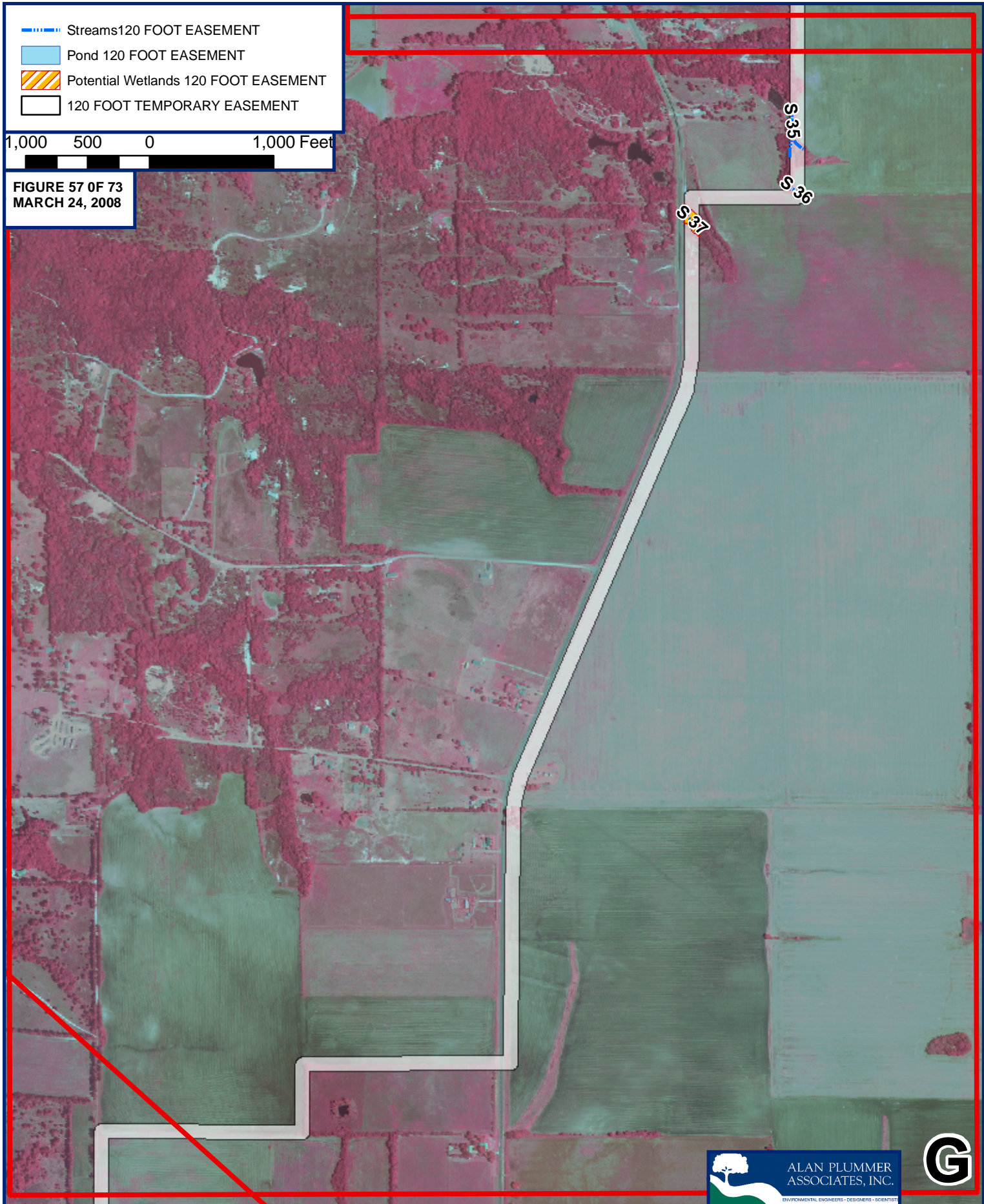


FIGURE 56 OF 73
MARCH 24, 2008



A-57
PJD RESULTS
PROPOSED BOIS D'ARC RESERVOIR - RAW WATER TRANSMISSION PIPELINE •

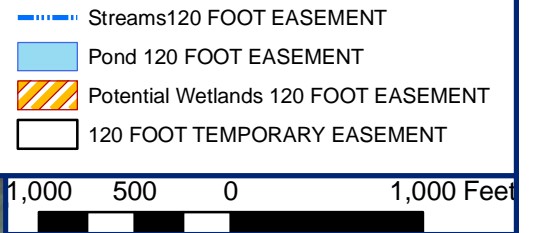


FIGURE 58 OF 73
MARCH 24, 2008

H



FIGURE 59 OF 73
MARCH 24, 2008

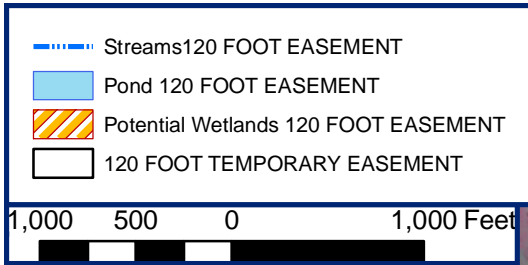


FIGURE 60 OF 73
MARCH 24, 2008

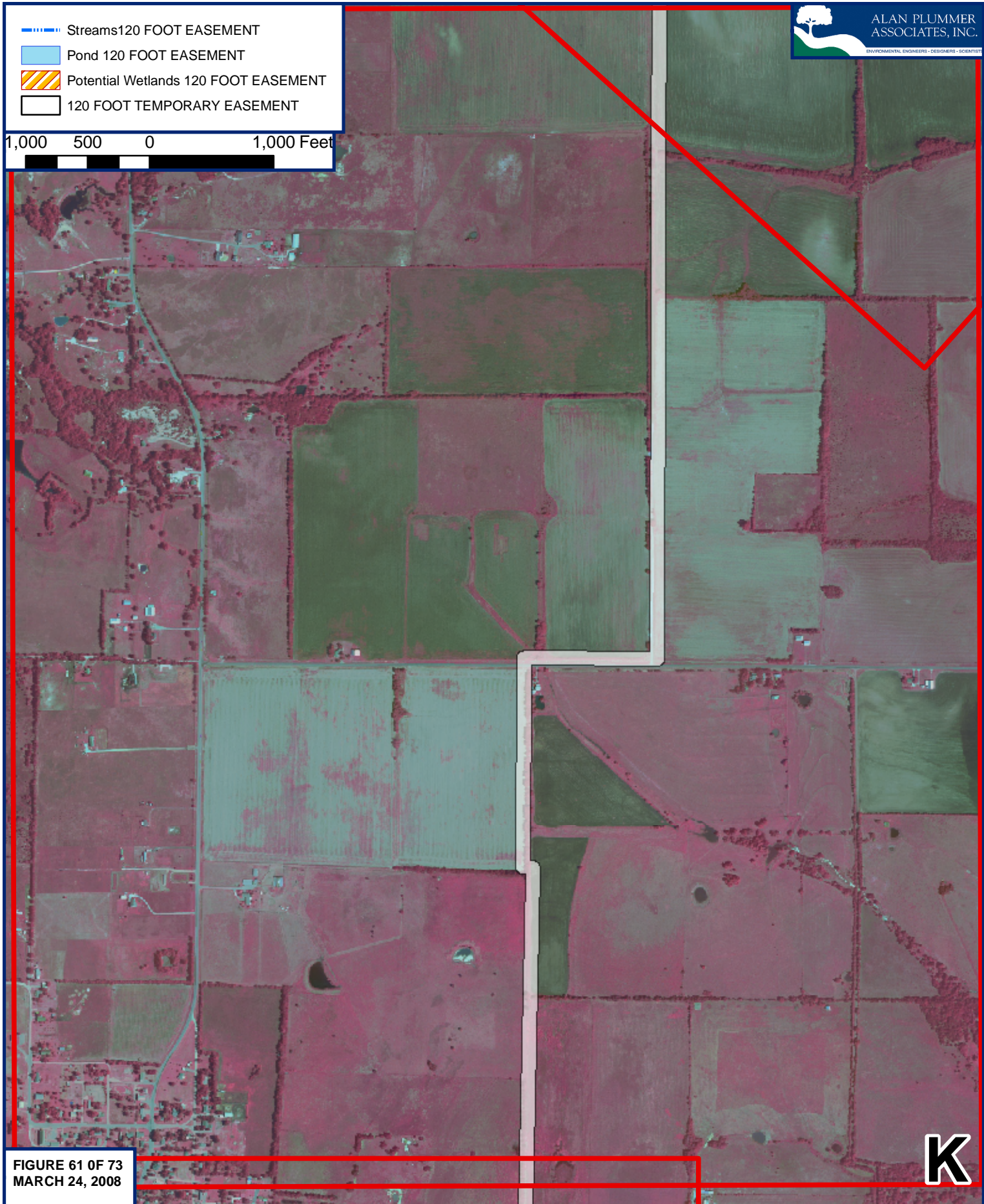


FIGURE 61 OF 73
MARCH 24, 2008

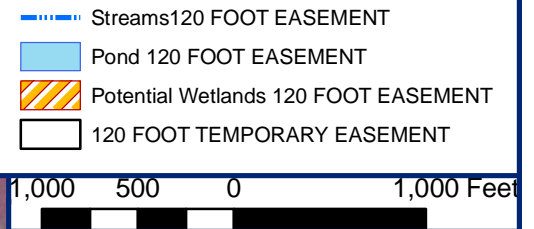


FIGURE 62 OF 73
MARCH 24, 2008

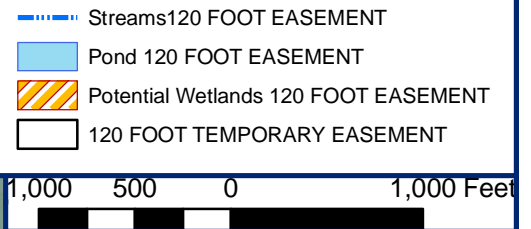


FIGURE 63 OF 73
MARCH 24, 2008

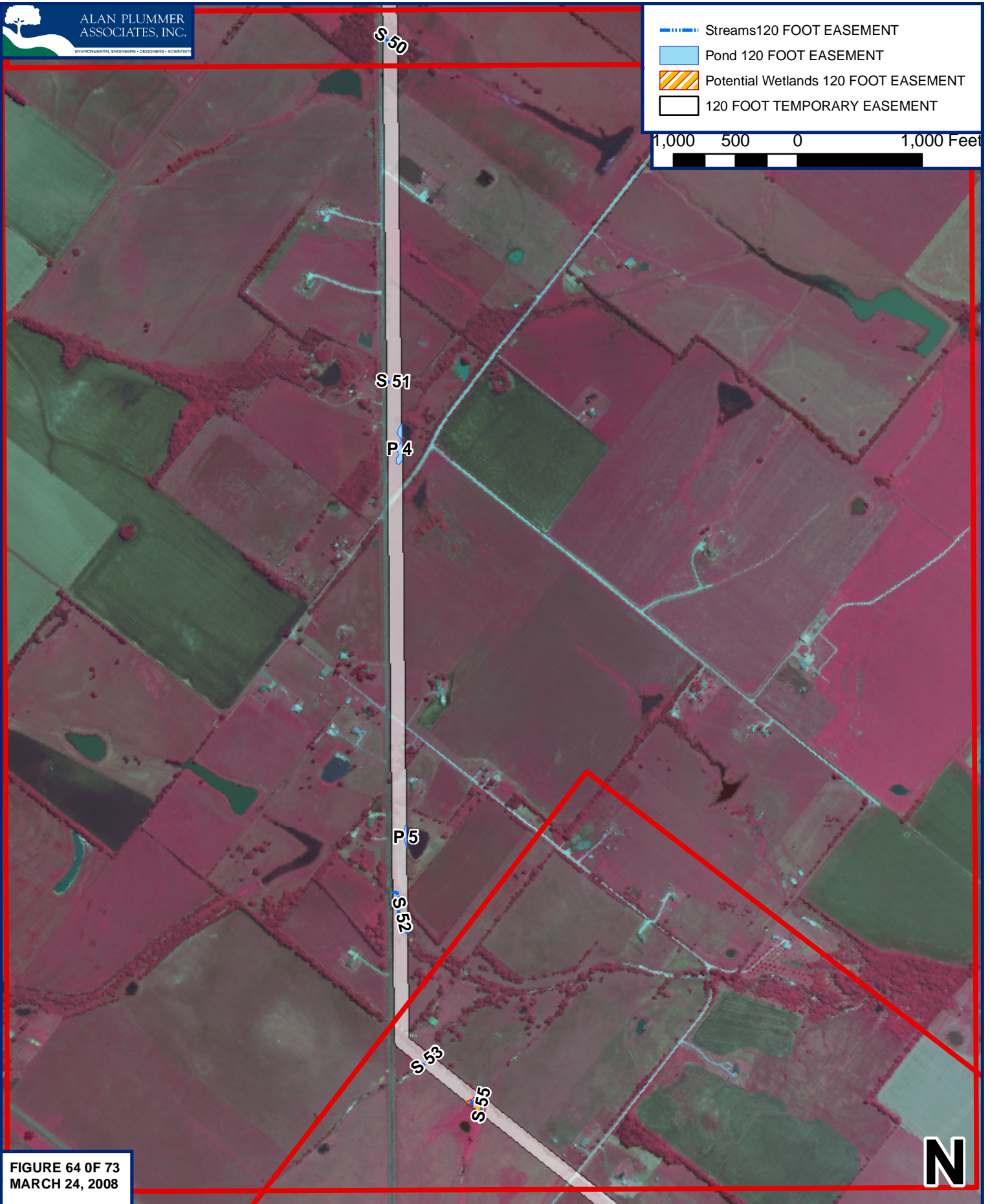


FIGURE 64 OF 73
MARCH 24, 2008

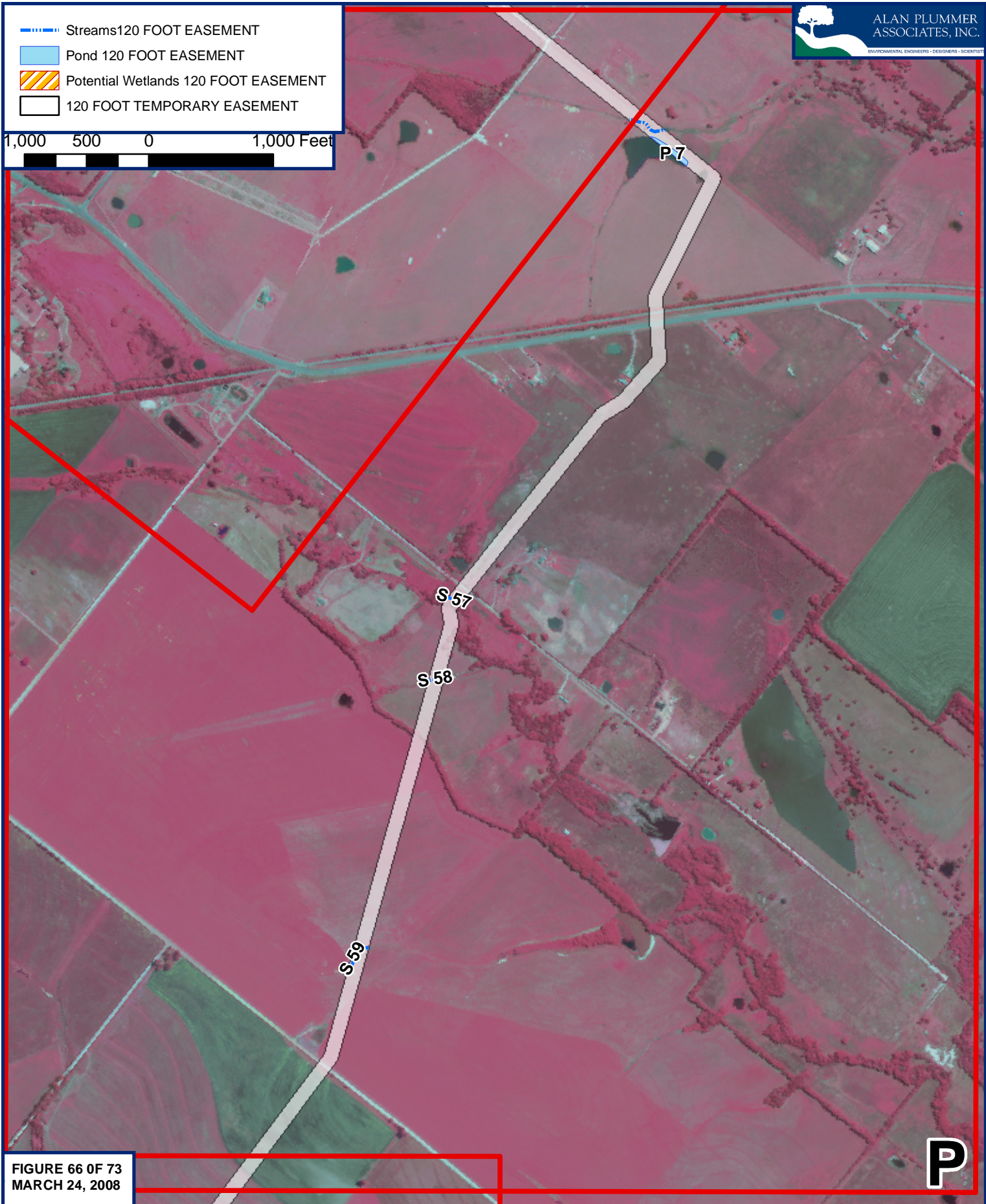
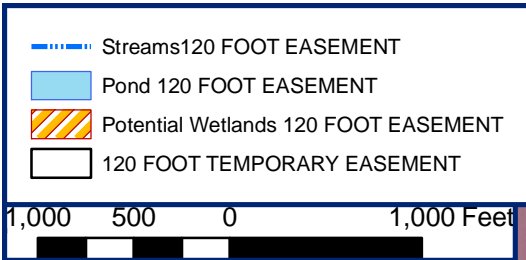


FIGURE 66 OF 73
MARCH 24, 2008

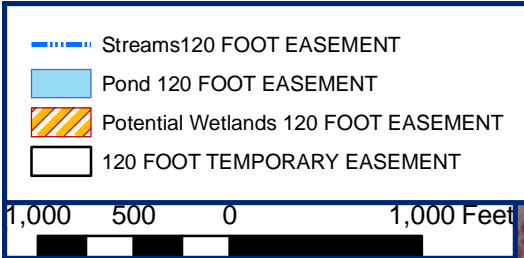


FIGURE 67 OF 73
MARCH 24, 2008



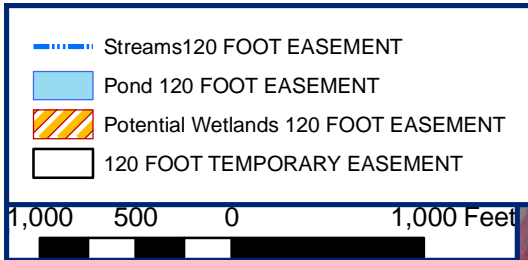


FIGURE 68 OF 73
MARCH 24, 2008

P11

- Streams 120 FOOT EASEMENT
- Pond 120 FOOT EASEMENT
- Potential Wetlands 120 FOOT EASEMENT
- 120 FOOT TEMPORARY EASEMENT

1,000 500 0 1,000 Feet

S77

S73

S74

FIGURE 69 OF 73
MARCH 24, 2008

S

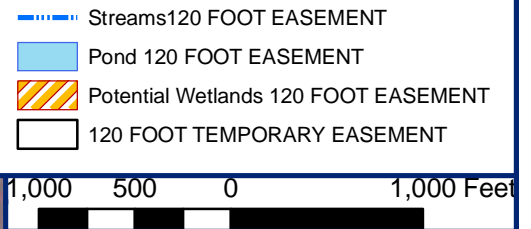


FIGURE 70 OF 73
MARCH 24, 2008

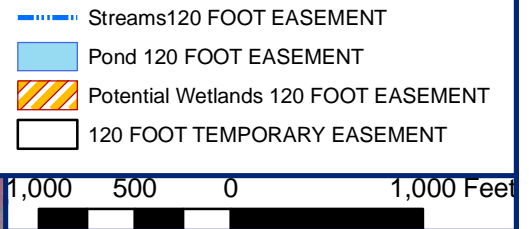


FIGURE 71 OF 73
MARCH 24, 2008

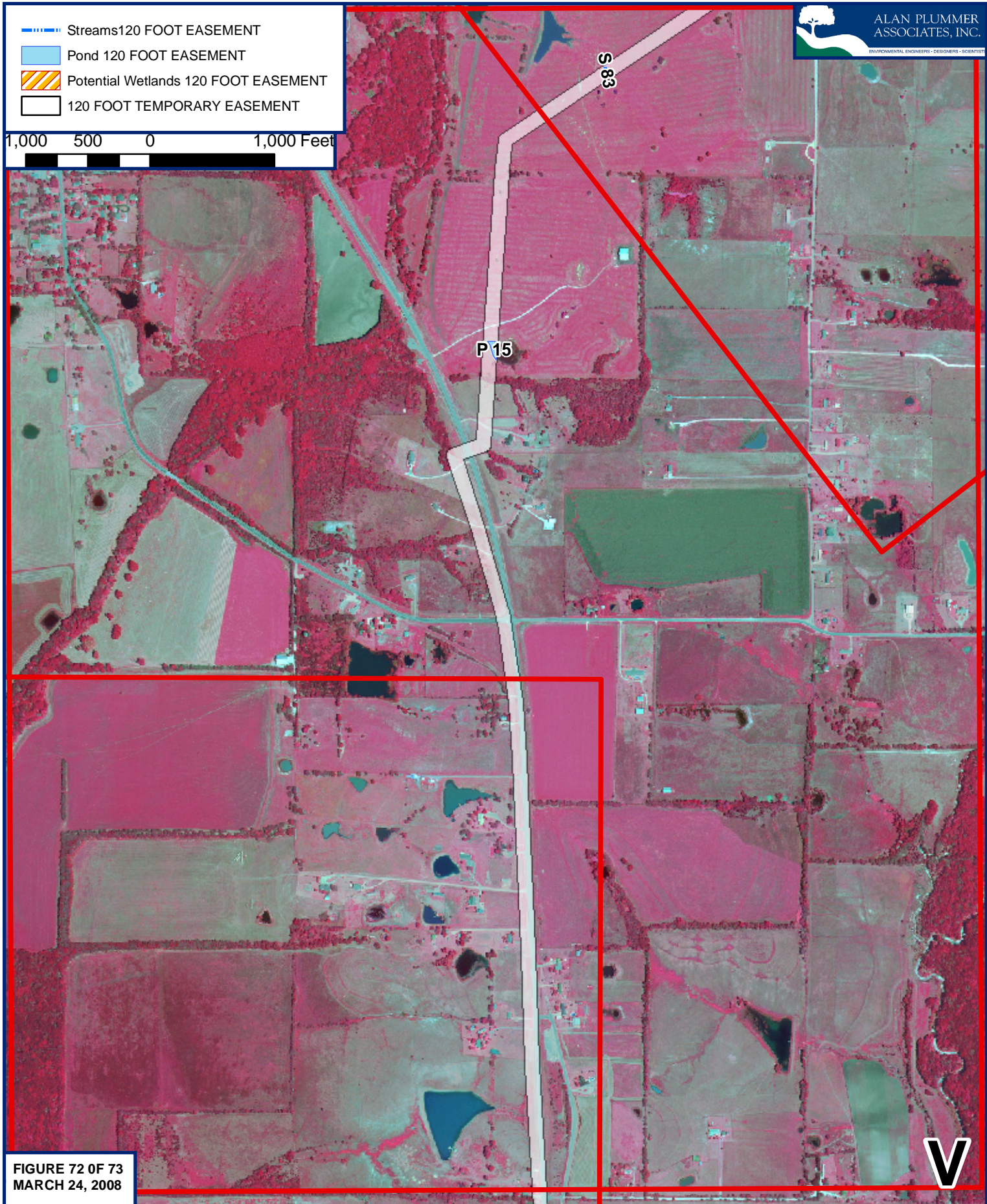
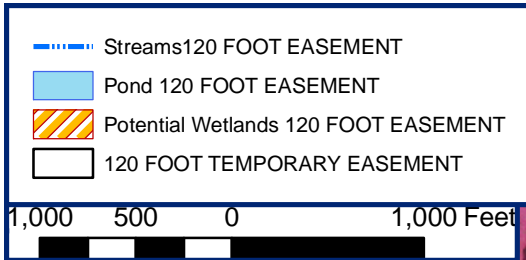


FIGURE 72 OF 73
MARCH 24, 2008



FIGURE 73 OF 73
MARCH 24, 2008