

## **APPENDIX T: LOWER BOIS D'ARC CREEK CONCEPTUAL CLEARING PLAN**

## **Lower Bois d'Arc Creek Reservoir Conceptual Clearing Plan**

### **January 22, 2015**

This Reservoir Clearing Plan reflects conditions depicted in the aerial photography flown in 2007. Land uses and vegetation cover types can change based on private landowner timber harvest, agricultural and recreational practices. This Reservoir Clearing Plan is subject to approval by the Section 404 permit, water right permit and Section 401 water quality certification.

#### **1. OBJECTIVES**

The objectives of the Reservoir Clearing Plan are to:

- Enhance reservoir fish habitat by minimizing the clearing of standing trees and shrubs in selected areas within the reservoir.
- Improve human access to shore locations by creating shore access locations for boat ramps, bank fishing, etc. through selective clearing of trees and shrubs.
- Reduce hazards to boating safety and fishing resulting from large floating debris by minimizing the source of such debris.
- Create aesthetic views of the reservoir along selected segments of the shoreline.

#### **2. RESERVOIR CLEARING**

The clearing of trees and shrubs from the reservoir area will be performed prior to reservoir filling. Recommended clearing methods and associated activities include areas for hand clearing, areas where hand or machine clearing are suitable, and the creation of access and safe landing sites along the reservoir shoreline.

Consideration will be given to both wood salvage and environmentally sensitive areas that may require specific treatment during clearing operations. Flagging or marking of clearing boundaries and on-site supervision will be required for the successful implementation of all aspects of the reservoir clearing plan.

##### **2.1 Areas to be Cleared**

Areas to be cleared are shown on Figure 1.

### **2.1.1 Access Sites**

User access to the reservoir area from land and access to land from the reservoir for reasons of recreational enjoyment (including camping, fishing, swimming, or hunting) or emergency purposes will be provided at designated locations (Figure 1). A number of landing sites will be identified along the future reservoir shoreline and these sites will be cleared. Clearing at these sites may require the removal of stumps and other vegetation to ensure safe access/egress to the shoreline. Hand clearing will be considered at landing sites above the high water mark to minimize environmental effects and maximize recreational, aesthetic and cultural opportunities.

### **2.1.2 Consideration of Environmentally Sensitive Sites**

If any environmentally sensitive site is identified, consideration of such sites, based on the nature of the site, will be incorporated into the final Reservoir Clearing Plan.

### **2.1.3 What is to be Cleared**

All standing woody material, which includes dead and living trees and shrubs 5 feet tall or taller and fallen trees 5 feet or more in length with a diameter of 6 inches or greater at its largest point will be cleared and removed.

### **2.1.4 Timing of Clearing Activities**

Reservoir clearing will be undertaken in the two years preceding reservoir impoundment except for areas that will be cleared during construction of the dam and associated facilities.

## **2.2 Methods of Clearing**

### **2.2.1 Mechanical Clearing**

The preferred method of clearing is mechanical clearing by shear-blading during the dry season. Using this method, the cleared material will be deposited in windrows or piles and left to dry. Cleared material will be burned as fire danger conditions allow.

Machine clearing has the advantage of shearing stumps off at ground level, along with all other vegetation that is there. It also accumulates most of the loose and dead woody debris that is on the forest floor. Machine clearing will minimize the amount of woody and organic debris that would remain on site and enter the water following reservoir filling.

All areas designated for mechanical clearing on Figure 1 will be cleared using this method, with the following exceptions:

- Cultural sites, known or discovered to exist, within the areas identified for mechanical clearing will receive different treatment, as appropriate, determined on a case by case basis.
- Selected locations as may be designated by the District for tree salvage (for use as firewood, saw-logs, cabins, etc.) and will be hand cleared using chain saws or other appropriate timber harvesting machinery.

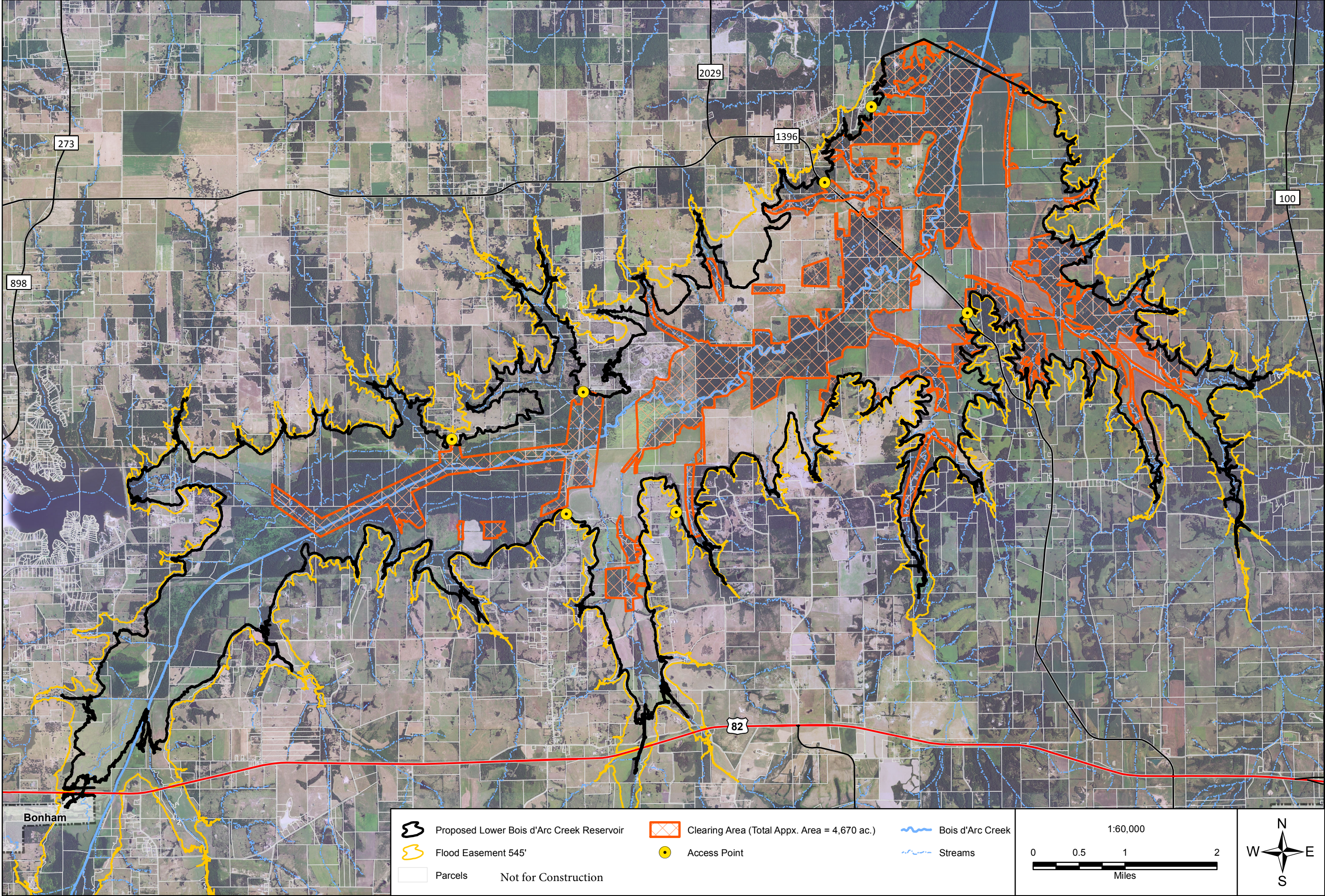
#### **2.2.2 Hand Clearing**


Hand clearing may need to be used where it is not possible to operate mechanical clearing equipment because of site location or conditions.

### **3. POST-IMPOUNDMENT**

Large woody debris will be removed as necessary for the safe operation of boat ramps, swimming areas, water intake structures, and spillways.





 <b>FREEZE &amp; NICHOLS</b> FREEZE AND NICHOLS, INC. 4500 International Plaza Suite 200 Fort Worth, Texas 76109-4895 (817) 735-7300	NTMWD Lower Bois d'Arc Creek Reservoir Clearing Plan		FN PROJECT NO. NTD06128
			DATE CREATED 1/7/2015
			DATUM & COORDINATE SYSTEM NAD83 State Plane (feet) Texas North Central
			FILE NAME Reservoir_Clearing_010714.mxd
		PREPARED BY SSJ	