



DEPARTMENT OF THE ARMY
U.S. ARMY CORPS OF ENGINEERS, TULSA DISTRICT
2488 EAST 81ST STREET
TULSA, OK, 74137-4290

CESWT-RO

17-Nov-2025

MEMORANDUM FOR RECORD

SUBJECT: US Army Corps of Engineers (Corps) Pre-2015 Regulatory Regime Approved Jurisdictional Determination in Light of *Sackett v. EPA*, 143 S. Ct. 1322 (2023),¹ SWT-2025-00187

BACKGROUND. An Approved Jurisdictional Determination (AJD) is a Corps document stating the presence or absence of waters of the United States on a parcel or a written statement and map identifying the limits of waters of the United States on a parcel. AJDs are clearly designated appealable actions and will include a basis of JD with the document.² AJDs are case-specific and are typically made in response to a request. AJDs are valid for a period of five years unless new information warrants revision of the determination before the expiration date or a District Engineer has identified, after public notice and comment, that specific geographic areas with rapidly changing environmental conditions merit re-verification on a more frequent basis.³ For the purposes of this AJD, we have relied on section 10 of the Rivers and Harbors Act of 1899 (RHA),⁴ the Clean Water Act (CWA) implementing regulations published by the Department of the Army in 1986 and amended in 1993 (references 2.a. and 2.b. respectively), the 2008 *Rapanos-Carabell* guidance (reference 2.c.), and other applicable guidance, relevant case law and longstanding practice, (collectively the pre-2015 regulatory regime), and the *Sackett* decision (reference 2.d.) in evaluating jurisdiction.

This Memorandum for Record (MFR) constitutes the basis of jurisdiction for a Corps AJD as defined in 33 CFR §331.2. The features addressed in this AJD were evaluated consistent with the definition of “waters of the United States” found in the pre-2015 regulatory regime and consistent with the Supreme Court’s decision in *Sackett*. This AJD did not rely on the 2023 “Revised Definition of ‘Waters of the United States,’” as amended on 8 September 2023 (Amended 2023 Rule) because, as of the date of this decision, the Amended 2023 Rule is not applicable in Oklahoma due to litigation.

1. SUMMARY OF CONCLUSIONS.

¹ While the Supreme Court’s decision in *Sackett* had no effect on some categories of waters covered under the CWA, and no effect on any waters covered under RHA, all categories are included in this Memorandum for Record for efficiency.

² 33 CFR 331.2.

³ Regulatory Guidance Letter 05-02.

⁴ USACE has authority under both Section 9 and Section 10 of the Rivers and Harbors Act of 1899 but for convenience, in this MFR, jurisdiction under RHA will be referred to as Section 10.

CESWT-RO

SUBJECT: Pre-2015 Regulatory Regime Approved Jurisdictional Determination in Light of *Sackett v. EPA*, 143 S. Ct. 1322 (2023), SWT-2025-00187

- a. Provide a list of each individual feature within the review area and the jurisdictional status of each one (i.e., identify whether each feature is/is not a water of the United States and/or a navigable water of the United States).

Legend:

Linear Feet – lf

Acre - ac

Feature Name	Measurement	Status	Authority
R4SB-1	2358 lf	Jurisdictional	Section 404 CWA
R6SB-1	105 lf	Non-Jurisdictional	N/A
PUB-1	0.096 ac	Non-Jurisdictional	N/A
PUB-2	0.085 ac	Non-Jurisdictional	N/A
PUB-3	0.377 ac	Non-Jurisdictional	N/A
PUB-4	0.479 ac	Non-Jurisdictional	N/A
PUB-5	3.475 ac	Jurisdictional	Section 404 CWA
PUB-6	0.205 ac	Non-Jurisdictional	N/A
PEM1-1	0.135 ac	Jurisdictional	Section 404 CWA
PEM1-2	0.190 ac	Non-Jurisdictional	N/A
PEM1-3	0.208 ac	Non-Jurisdictional	N/A
PEM1-4	0.119 ac	Jurisdictional	Section 404 CWA
PEM1-5	0.145 ac	Non-Jurisdictional	N/A
PEM1-6	0.271 ac	Jurisdictional	Section 404 CWA
PEM1-7	0.094 ac	Non-Jurisdictional	N/A

2. REFERENCES.

- a. Final Rule for Regulatory Programs of the Corps of Engineers, 51 FR 41206 (November 13, 1986).
- b. Clean Water Act Regulatory Programs, 58 FR 45008 (August 25, 1993).
- c. U.S. EPA & U.S. Army Corps of Engineers, Clean Water Act Jurisdiction Following the U.S. Supreme Court’s Decision in *Rapanos v. United States & Carabell v. United States* (December 2, 2008)
- d. *Sackett v. EPA*, 598 U.S. 651, 143 S. Ct. 1322 (2023)

CESWT-RO

SUBJECT: Pre-2015 Regulatory Regime Approved Jurisdictional Determination in Light of *Sackett v. EPA*, 143 S. Ct. 1322 (2023), SWT-2025-00187

3. REVIEW AREA. The review area is approximately 160 acres at Latitude 35.99163, Longitude -95.72175 (center of the review area), in Wagoner County, Oklahoma.
4. NEAREST TRADITIONAL NAVIGABLE WATER (TNW), INTERSTATE WATER, OR THE TERRITORIAL SEAS TO WHICH THE AQUATIC RESOURCE IS CONNECTED. Arkansas River, Interstate Water of multiple states.
5. FLOWPATH FROM THE SUBJECT AQUATIC RESOURCES TO A TNW, INTERSTATE WATER, OR THE TERRITORIAL SEAS. The unnamed tributary of Arkansas River flows to the Arkansas River.
6. SECTION 10 JURISDICTIONAL WATERS⁵: Describe aquatic resources or other features within the review area determined to be jurisdictional in accordance with Section 10 of the Rivers and Harbors Act of 1899. Include the size of each aquatic resource or other feature within the review area and how it was determined to be jurisdictional in accordance with Section 10.⁶ N/A
7. SECTION 404 JURISDICTIONAL WATERS: Describe the aquatic resources within the review area that were found to meet the definition of waters of the United States in accordance with the pre-2015 regulatory regime and consistent with the Supreme Court's decision in *Sackett*. List each aquatic resource separately, by name, consistent with the naming convention used in section 1, above. Include a rationale for each aquatic resource, supporting that the aquatic resource meets the relevant category of "waters of the United States" in the pre-2015 regulatory regime. The rationale should also include a written description of, or reference to a map in the administrative record that shows, the lateral limits of jurisdiction for each aquatic resource, including how that limit was determined, and incorporate relevant references used. Include the size of each aquatic resource in acres or linear feet and attach and reference related figures as needed.
 - a. TNWs (a)(1): N/A
 - b. Interstate Waters (a)(2): N/A

⁵ 33 CFR 329.9(a) A waterbody which was navigable in its natural or improved state, or which was susceptible of reasonable improvement (as discussed in § 329.8(b) of this part) retains its character as "navigable in law" even though it is not presently used for commerce, or is presently incapable of such use because of changed conditions or the presence of obstructions.

⁶ This MFR is not to be used to make a report of findings to support a determination that the water is a navigable water of the United States. The district must follow the procedures outlined in 33 CFR part 329.14 to make a determination that water is a navigable water of the United States subject to Section 10 of the RHA.

CESWT-RO

SUBJECT: Pre-2015 Regulatory Regime Approved Jurisdictional Determination in Light of *Sackett v. EPA*, 143 S. Ct. 1322 (2023), SWT-2025-00187

- c. Other Waters (a)(3): N/A
- d. Impoundments (a)(4): PUB-5 is an impoundment of an unnamed tributary of the Arkansas River according to the USGS Topographic Map, USGS NHD, and therequestor's delineation.
- e. Tributaries (a)(5): R4SB-1 is a relatively permanent water according to the USGS Topographic Map, USGS NHD, and the requestor's delineation.
- f. The territorial seas (a)(6): N/A
- g. Adjacent wetlands (a)(7): PEM1-1, PEM1-4, PEM1-6 are adjacent emergent wetlands of an unnamed tributary of the Arkansas River (R4SB-1) according to the requestor's delineation.

8. NON-JURISDICTIONAL AQUATIC RESOURCES AND FEATURES

- a. Describe aquatic resources and other features within the review area identified as "generally non-jurisdictional" in the preamble to the 1986 regulations (referred to as "preamble waters").⁷ Include size of the aquatic resource or feature within the review area and describe how it was determined to be non-jurisdictional under the CWA as a preamble water.

PUB-1, PUB-2, PUB-3, PUB-4, and PUB-6 are artificial ponds excavated wholly in uplands according to the USGS Topographic map and the requestors delineation.

- b. Describe aquatic resources and features within the review area identified as "generally not jurisdictional" in the *Rapanos* guidance. Include size of the aquatic resource or feature within the review area and describe how it was determined to be non-jurisdictional under the CWA based on the criteria listed in the guidance.

R6SB-1 is an unmapped drainage feature according to the USGS Topographic Map, USGS NHD, and the requestor's delineation.

- c. Describe aquatic resources and features identified within the review area as waste treatment systems, including treatment ponds or lagoons designed to meet the requirements of CWA. Include the size of the waste treatment system within

⁷ 51 FR 41217, November 13, 1986.

CESWT-RO

SUBJECT: Pre-2015 Regulatory Regime Approved Jurisdictional Determination in Light of *Sackett v. EPA*, 143 S. Ct. 1322 (2023), SWT-2025-00187

the review area and describe how it was determined to be a waste treatment system. N/A

- d. Describe aquatic resources and features within the review area determined to be prior converted cropland in accordance with the 1993 regulations (reference 2.b.). Include the size of the aquatic resource or feature within the review area and describe how it was determined to be prior converted cropland. N/A
- e. Describe aquatic resources (i.e. lakes and ponds) within the review area, which do not have a nexus to interstate or foreign commerce, and prior to the January 2001 Supreme Court decision in “SWANCC,” would have been jurisdictional based solely on the “Migratory Bird Rule.” Include the size of the aquatic resource or feature, and how it was determined to be an “isolated water” in accordance with SWANCC. N/A
- f. Describe aquatic resources and features within the review area that were determined to be non-jurisdictional because they do not meet one or more categories of waters of the United States under the pre-2015 regulatory regime consistent with the Supreme Court’s decision in *Sackett* (e.g., tributaries that are non-relatively permanent waters; non-tidal wetlands that do not have a continuous surface connection to a jurisdictional water).

PEM1-2, PEM1-3, PEM1-5, and PEM1-7 are non-adjacent wetland features without a continuous surface connection to the unnamed tributary of the Arkansas River according to the requestor’s delineation.

9. DATA SOURCES. List sources of data/information used in making determination. Include titles and dates of sources used and ensure that information referenced is available in the administrative record.
 - a. The requestors “Lentic and Lotic Waterbody and Wetland Delineation Study,” dated April 2025.
 - b. USGS Topographic Map, provided with the requestor’s delineation.
 - c. USGS NHD, provided with the requestor’s delineation.
 - d. USFWS NWI, provided with the requestor’s delineation.
 - e. USGS Stream Stats, provided with the requestor’s delineation.

CESWT-RO

SUBJECT: Pre-2015 Regulatory Regime Approved Jurisdictional Determination in Light of *Sackett v. EPA*, 143 S. Ct. 1322 (2023), SWT-2025-00187

10. OTHER SUPPORTING INFORMATION. N/A

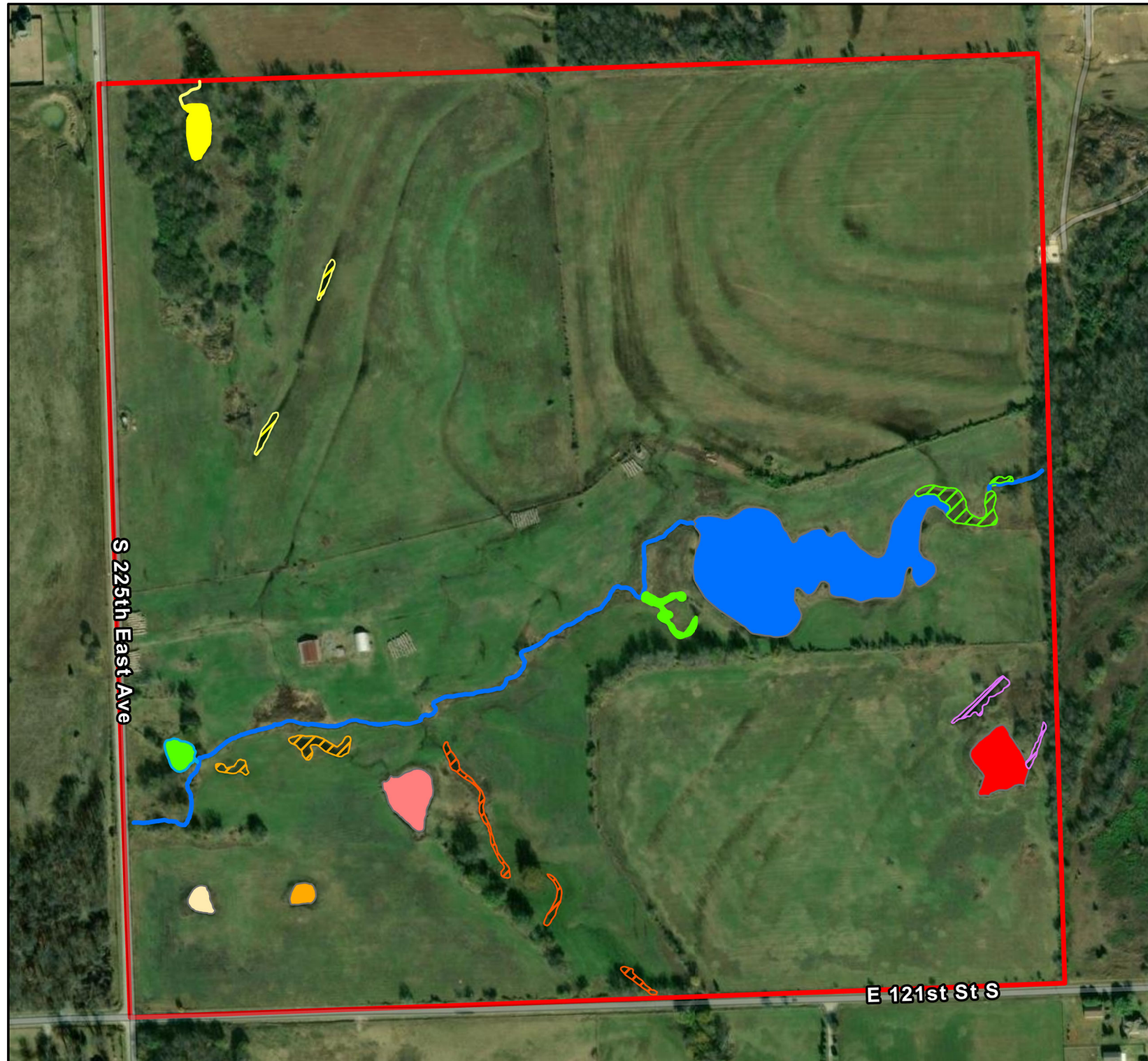
11. NOTE: The structure and format of this MFR were developed in coordination with the EPA and Department of the Army. The MFR's structure and format may be subject to future modification or may be rescinded as needed to implement additional guidance from the agencies; however, the approved jurisdictional determination described herein is a final agency action.



US Army Corps
of Engineers®
Tulsa District

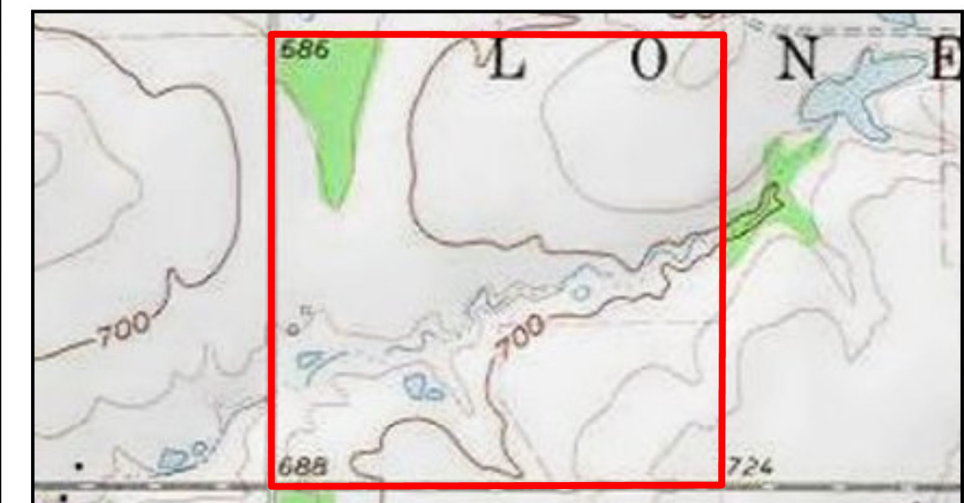
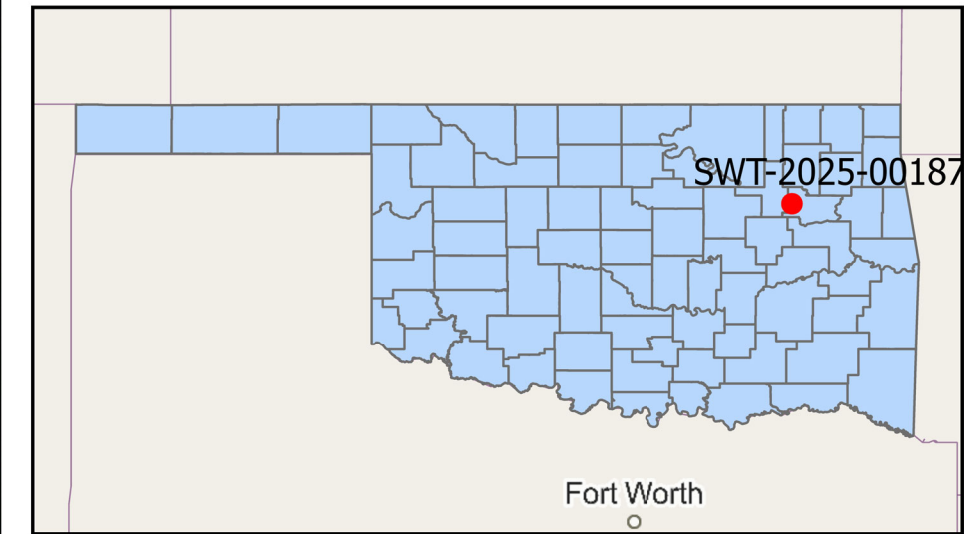
Approved Jurisdictional Determination

SWT-2025-00187



Legend

Non-Jurisdictional	Jurisdictional	Review Area
PEM1-2	PEM1-1	Review Area
PEM1-3	PEM1-4	
PEM1-5	PEM1-6	
PEM1-7	PUB-5	
PUB-1	R4SB-1	
PUB-2		
PUB-3		
PUB-4		
PUB-6		
R6SB-1		



0 0.05 0.1 0.2 Miles



Vantor, Map data © OpenStreetMap contributors, Microsoft, Facebook, Inc. and its affiliates, Esri Community Maps contributors, Map layer by Esri, Esri Community Maps Contributors, City of Tulsa, Texas Parks & Wildlife, © OpenStreetMap, Microsoft, Esri, TomTom, Garmin, SafeGraph, GeoTechnologies, Inc, METI/NASA, USGS, EPA, NPS, US Census Bureau, USDA, USFWS, Copyright:© 2013 National Geographic Society, i-cubed