



DEPARTMENT OF THE ARMY
U.S. ARMY CORPS OF ENGINEERS, TULSA DISTRICT
2488 EAST 81ST STREET
TULSA, OK, 74137-4290

CESWT-RO

21-Feb-2025

MEMORANDUM FOR RECORD

SUBJECT: US Army Corps of Engineers (Corps) Pre-2015 Regulatory Regime
Approved Jurisdictional Determination in Light of *Sackett v. EPA*, 143 S. Ct. 1322
(2023),¹ SWT-2025-00035

BACKGROUND. An Approved Jurisdictional Determination (AJD) is a Corps document stating the presence or absence of waters of the United States on a parcel or a written statement and map identifying the limits of waters of the United States on a parcel. AJDs are clearly designated appealable actions and will include a basis of JD with the document.² AJDs are case-specific and are typically made in response to a request. AJDs are valid for a period of five years unless new information warrants revision of the determination before the expiration date or a District Engineer has identified, after public notice and comment, that specific geographic areas with rapidly changing environmental conditions merit re-verification on a more frequent basis.³ For the purposes of this AJD, we have relied on section 10 of the Rivers and Harbors Act of 1899 (RHA),⁴ the Clean Water Act (CWA) implementing regulations published by the Department of the Army in 1986 and amended in 1993 (references 2.a. and 2.b. respectively), the 2008 *Rapanos-Carabell* guidance (reference 2.c.), and other applicable guidance, relevant case law and longstanding practice, (collectively the pre-2015 regulatory regime), and the *Sackett* decision (reference 2.d.) in evaluating jurisdiction.

This Memorandum for Record (MFR) constitutes the basis of jurisdiction for a Corps AJD as defined in 33 CFR §331.2. The features addressed in this AJD were evaluated consistent with the definition of "waters of the United States" found in the pre-2015 regulatory regime and consistent with the Supreme Court's decision in *Sackett*. This AJD did not rely on the 2023 "Revised Definition of 'Waters of the United States,'" as amended on 8 September 2023 (Amended 2023 Rule) because, as of the date of this decision, the Amended 2023 Rule is not applicable in Oklahoma due to litigation.

1. SUMMARY OF CONCLUSIONS.

¹ While the Supreme Court's decision in *Sackett* had no effect on some categories of waters covered under the CWA, and no effect on any waters covered under RHA, all categories are included in this Memorandum for Record for efficiency.

² 33 CFR 331.2.

³ Regulatory Guidance Letter 05-02.

⁴ USACE has authority under both Section 9 and Section 10 of the Rivers and Harbors Act of 1899 but for convenience, in this MFR, jurisdiction under RHA will be referred to as Section 10.

SUBJECT: Pre-2015 Regulatory Regime Approved Jurisdictional Determination in Light of *Sackett v. EPA*, 143 S. Ct. 1322 (2023), SWT-2025-00035

- a. Provide a list of each individual feature within the review area and the jurisdictional status of each one (i.e., identify whether each feature is/is not a water of the United States and/or a navigable water of the United States).
 - i. R6SB-1, Non-Relatively Permanent Water, 286 linear feet, Non-Jurisdictional
 - ii. R6SB-2, Non-Relatively Permanent Water, 171 linear feet, Non-Jurisdictional
 - iii. PUB-1, Artificial Pond, 0.271 acre, Non-Jurisdictional

2. REFERENCES.

- a. Final Rule for Regulatory Programs of the Corps of Engineers, 51 FR 41206 (November 13, 1986).
- b. Clean Water Act Regulatory Programs, 58 FR 45008 (August 25, 1993).
- c. U.S. EPA & U.S. Army Corps of Engineers, Clean Water Act Jurisdiction Following the U.S. Supreme Court's Decision in *Rapanos v. United States & Carabell v. United States* (December 2, 2008)
- d. *Sackett v. EPA*, 598 U.S. 651, 143 S. Ct. 1322 (2023)

3. REVIEW AREA. The review area is approximately 25 acres at Latitude 35.05644, Longitude -97.47927, at the center of the review area in McClain County, Oklahoma.

4. NEAREST TRADITIONAL NAVIGABLE WATER (TNW), INTERSTATE WATER, OR THE TERRITORIAL SEAS TO WHICH THE AQUATIC RESOURCE IS CONNECTED. N/A

5. FLOWPATH FROM THE SUBJECT AQUATIC RESOURCES TO A TNW, INTERSTATE WATER, OR THE TERRITORIAL SEAS. N/A

6. SECTION 10 JURISDICTIONAL WATERS⁵: Describe aquatic resources or other features within the review area determined to be jurisdictional in accordance with Section 10 of the Rivers and Harbors Act of 1899. Include the size of each aquatic

⁵ 33 CFR 329.9(a) A waterbody which was navigable in its natural or improved state, or which was susceptible of reasonable improvement (as discussed in § 329.8(b) of this part) retains its character as "navigable in law" even though it is not presently used for commerce, or is presently incapable of such use because of changed conditions or the presence of obstructions.

SUBJECT: Pre-2015 Regulatory Regime Approved Jurisdictional Determination in Light of *Sackett v. EPA*, 143 S. Ct. 1322 (2023), SWT-2025-00035

resource or other feature within the review area and how it was determined to be jurisdictional in accordance with Section 10.⁶ N/A

7. SECTION 404 JURISDICTIONAL WATERS: Describe the aquatic resources within the review area that were found to meet the definition of waters of the United States in accordance with the pre-2015 regulatory regime and consistent with the Supreme Court's decision in *Sackett*. List each aquatic resource separately, by name, consistent with the naming convention used in section 1, above. Include a rationale for each aquatic resource, supporting that the aquatic resource meets the relevant category of "waters of the United States" in the pre-2015 regulatory regime. The rationale should also include a written description of, or reference to a map in the administrative record that shows, the lateral limits of jurisdiction for each aquatic resource, including how that limit was determined, and incorporate relevant references used. Include the size of each aquatic resource in acres or linear feet and attach and reference related figures as needed.

- a. TNWs (a)(1): N/A
- b. Interstate Waters (a)(2): N/A
- c. Other Waters (a)(3): N/A
- d. Impoundments (a)(4): N/A
- e. Tributaries (a)(5): N/A
- f. The territorial seas (a)(6): N/A
- g. Adjacent wetlands (a)(7): N/A

8. NON-JURISDICTIONAL AQUATIC RESOURCES AND FEATURES

- a. Describe aquatic resources and other features within the review area identified as "generally non-jurisdictional" in the preamble to the 1986 regulations (referred to as "preamble waters").⁷ Include size of the aquatic resource or feature within

⁶ This MFR is not to be used to make a report of findings to support a determination that the water is a navigable water of the United States. The district must follow the procedures outlined in 33 CFR part 329.14 to make a determination that water is a navigable water of the United States subject to Section 10 of the RHA.

⁷ 51 FR 41217, November 13, 1986.

SUBJECT: Pre-2015 Regulatory Regime Approved Jurisdictional Determination in Light of *Sackett v. EPA*, 143 S. Ct. 1322 (2023), SWT-2025-00035

the review area and describe how it was determined to be non-jurisdictional under the CWA as a preamble water.

The USFWS National Wetland Inventory (NWI) map depicts features denoted as riverine, unknown perennial, unconsolidated bottom, semi-permanently flooded (R5UBF); and palustrine, forested, broad-leaved deciduous, temporarily flooded, diked/impounded (PFO1Ah), that appear near PUB-1, however, were not observed present according to the requestor's delineation.

The feature denoted as PUB-1 is indicated on the USFWS NWI map as a palustrine, unconsolidated shore, seasonally flooded, diked/impounded (PUSCh) feature. This artificial pond was likely constructed for agricultural activities in the past. No outfall structure or clearly visible overflow was associated with PUB-1 according to the requestor's delineation. The non-RWP feature denoted as R6SB-2 originates and conveys storm water from the south and southwest adjoining school complex and connects directly to PUB-1.

- b. Describe aquatic resources and features within the review area identified as "generally not jurisdictional" in the *Rapanos* guidance. Include size of the aquatic resource or feature within the review area and describe how it was determined to be non-jurisdictional under the CWA based on the criteria listed in the guidance.

N/A

- c. Describe aquatic resources and features identified within the review area as waste treatment systems, including treatment ponds or lagoons designed to meet the requirements of CWA. Include the size of the waste treatment system within the review area and describe how it was determined to be a waste treatment system. N/A
- d. Describe aquatic resources and features within the review area determined to be prior converted cropland in accordance with the 1993 regulations (reference 2.b.). Include the size of the aquatic resource or feature within the review area and describe how it was determined to be prior converted cropland. N/A
- e. Describe aquatic resources (i.e. lakes and ponds) within the review area, which do not have a nexus to interstate or foreign commerce, and prior to the January 2001 Supreme Court decision in "*SWANCC*," would have been jurisdictional based solely on the "Migratory Bird Rule." Include the size of the aquatic resource or feature, and how it was determined to be an "isolated water" in accordance with *SWANCC*. N/A

SUBJECT: Pre-2015 Regulatory Regime Approved Jurisdictional Determination in Light of *Sackett v. EPA*, 143 S. Ct. 1322 (2023), SWT-2025-00035

- f. Describe aquatic resources and features within the review area that were determined to be non-jurisdictional because they do not meet one or more categories of waters of the United States under the pre-2015 regulatory regime consistent with the Supreme Court's decision in *Sackett* (e.g., tributaries that are non-relatively permanent waters; non-tidal wetlands that do not have a continuous surface connection to a jurisdictional water).

A first order, intermittent tributary to Walnut Creek is mapped on the USGS 7.5-Minute Topographic Map, downstream and immediately upstream of the review area. The USFWS NWI indicates an R4SBC feature at the same location. According to the requestor's delineation, a discontinuous feature without a clearly discernible ordinary high water mark (OHWM) was observed within the review area as two segments (R6SB-1 and R6SB-2). A review of satellite imagery, for the whole reach of the feature to where it joins Walnut Creek, does not indicate relatively permanent flow, evident by areas of discontinuous OHWM. The requestor's delineation also observed the R6SB-1 feature north of the review area was a bermuda grass, *Cynodon dactylon*, lined swale through a maintained grass pasture. The R6SB-2 feature was delineated near the southern edge of the study area and drains into PUB-1. The R6SB-2 feature originates at a corrugated plastic culvert collecting storm water from the south adjoining school system complex.

9. DATA SOURCES. List sources of data/information used in making determination. Include titles and dates of sources used and ensure that information referenced is available in the administrative record.
 - a. The requestor's Lentic and Lotic Waterbody and Wetland Delineation Study dated January 2025.
 - b. USGS Topographic Map, provided with the requestor's delineation.
 - c. USGS NHD, provided with the requestor's delineation.
 - d. USFWS NWI, provided with the requestor's delineation.
 - e. USGS Stream Stats, provided with the requestor's delineation.
10. OTHER SUPPORTING INFORMATION. N/A

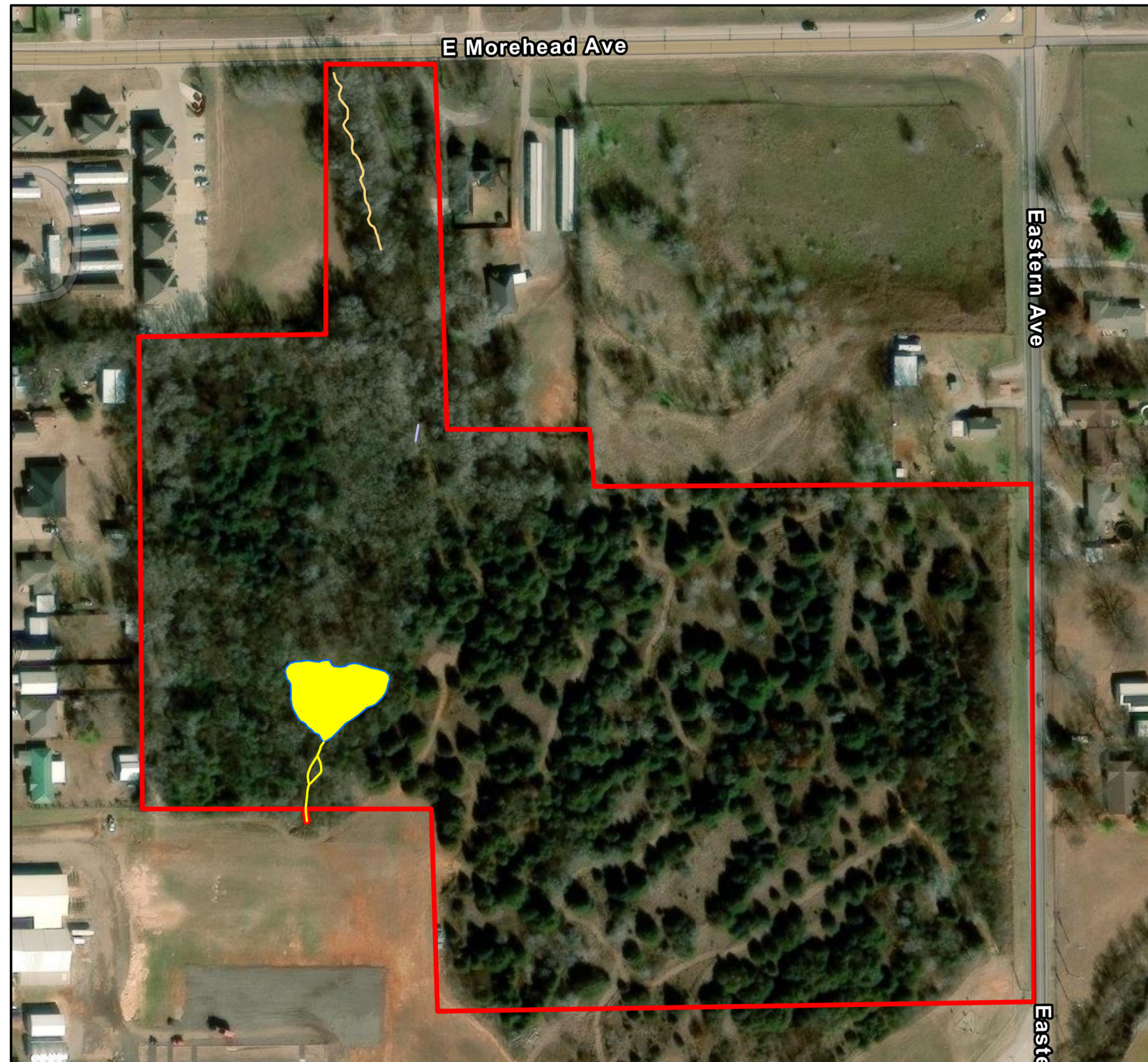
CESWT-RO

SUBJECT: Pre-2015 Regulatory Regime Approved Jurisdictional Determination in Light of *Sackett v. EPA*, 143 S. Ct. 1322 (2023), SWT-2025-00035





11. NOTE: The structure and format of this MFR were developed in coordination with the EPA and Department of the Army. The MFR's structure and format may be subject to future modification or may be rescinded as needed to implement additional guidance from the agencies; however, the approved jurisdictional determination described herein is a final agency action.

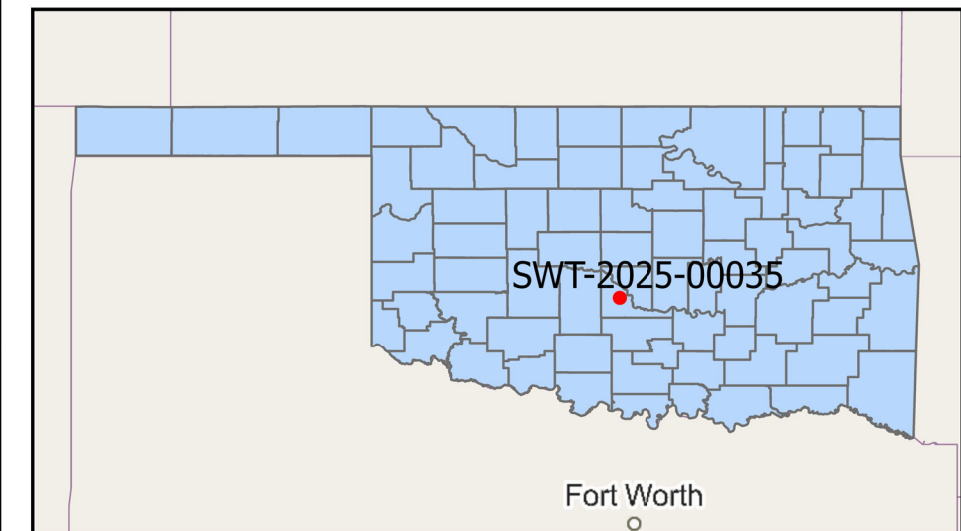
Approved Jurisdictional Determination

SWT-2025-00035



Legend

-  Review Area
-  PUB1 - Non-Jurisdictional, Artificial Pond
-  R6SB1 - Non-Jurisdictional, Non-Relatively Permanent Water
-  R6SB2 - Non-Jurisdictional, Non-Relatively Permanent Water



Maxar, Microsoft, Map data © OpenStreetMap contributors, Microsoft, Facebook, Inc. and its affiliates, Esri Community Maps contributors, Map layer by Esri, Copyright: © 2013 National Geographic Society, i-cubed, Esri Community Maps Contributors, Texas Parks & Wildlife, © OpenStreetMap, Microsoft, Esri, TomTom, Garmin, SafeGraph, GeoTechnologies, Inc, METI/NASA, USGS, EPA, NPS, US Census Bureau, USDA, USFWS